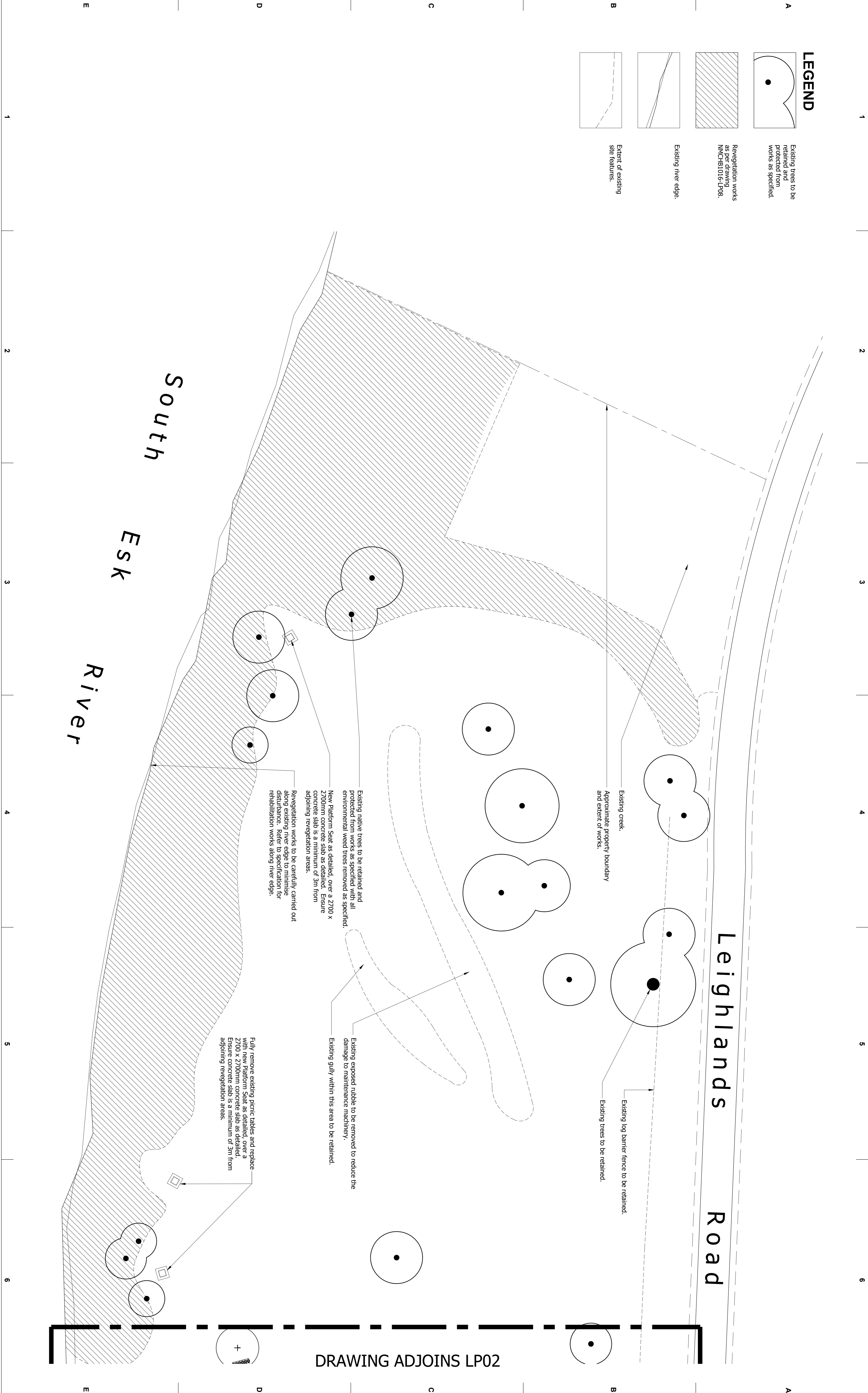


1 2 3 4 5 6

LEGEND

- A** Existing trees to be retained and protected from works as specified.
- Revegetation works as per drawing MMCHB1016-LP08.
- Existing river edge.
- Extent of existing site features.



M : 0412 336 381

ABN: 97 468 721 622

PO Box 5017

Launceston TAS 5017

LANGGE

design

landscape architecture

www.langedesign.com.au
leor@langedesign.com.au

CLIENT



NORTHERN MIDLANDS COUNCIL

ISSUE SCHEDULE

Issue	Description	Date
A	Preliminary Issue	15/11/16
B	Approval Issue	23/11/16
C	Plan Updated	28/02/17

NOTES

Landscape works drawings, associated specifications and details shall be read in conjunction with all other project consultants approved drawings including architectural, engineering, hydraulic, and electrical services.

DIAL BEFORE YOU DIG. Check all underground services prior to commencement of any works.

Ensure all dimensions are checked on site prior to commencement of landscape works. All dimensions shown on drawings and details are in millimetres unless noted otherwise.

PROJECT

HONEYSUCKLE BANKS PARKLAND
Leighlands Road, Evandale, Tasmania

LANDSCAPE PLAN

DRAWING INFORMATION

Scale Bar: 0.1, 2, 5, 10, 20m

Date: 28/02/17

Project Stage: APPROVAL

Sheet: 1/8

DRAWING No.: MMCHB1016 - LP01

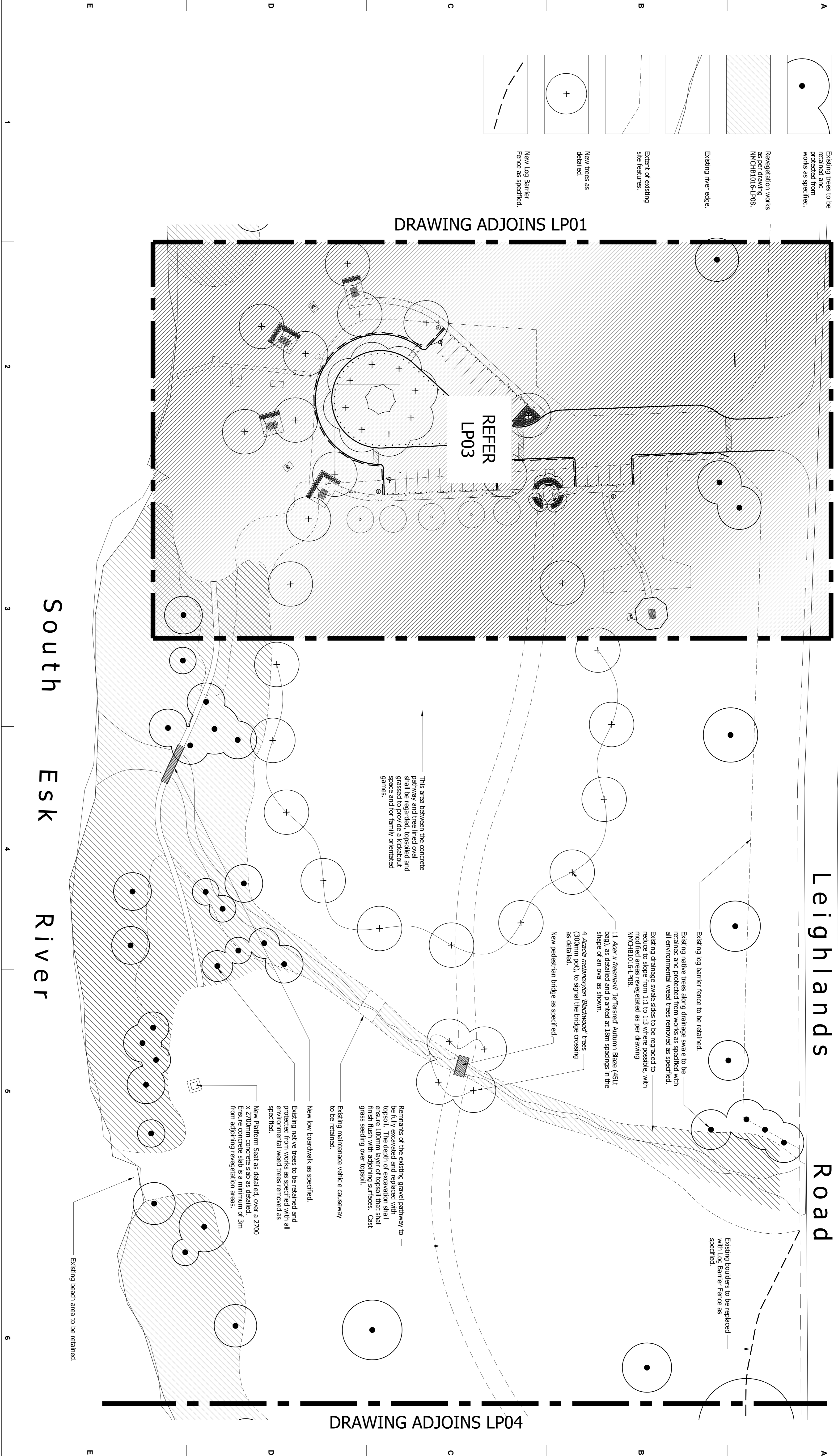
Issue: C

1 2 3 4 5 6

LEGEND

- A Existing trees to be retained and protected from works as specified.
- Renovation works as per drawing MMCHB1016-LP08.
- Existing river edge.
- Extent of existing site features.
- New trees as detailed.
- New Log Barrier Fence as specified.

DRAWING ADJOINS LP01



DRAWING ADJOINS LP04

South Esk River

Leighlands Road

M : 0412 336 381
A/N: 97 468 721 622
PO Box 5017
Launceston TAS 5017
www.langgedesign.com.au
leon@langgedesign.com.au



CLIENT		ISSUE SCHEDULE	
Issue	Description	Date	
A	Preliminary Issue	15/11/16	
B	Approval Issue	23/11/16	
C	Pathways removed	28/02/17	

NOTES

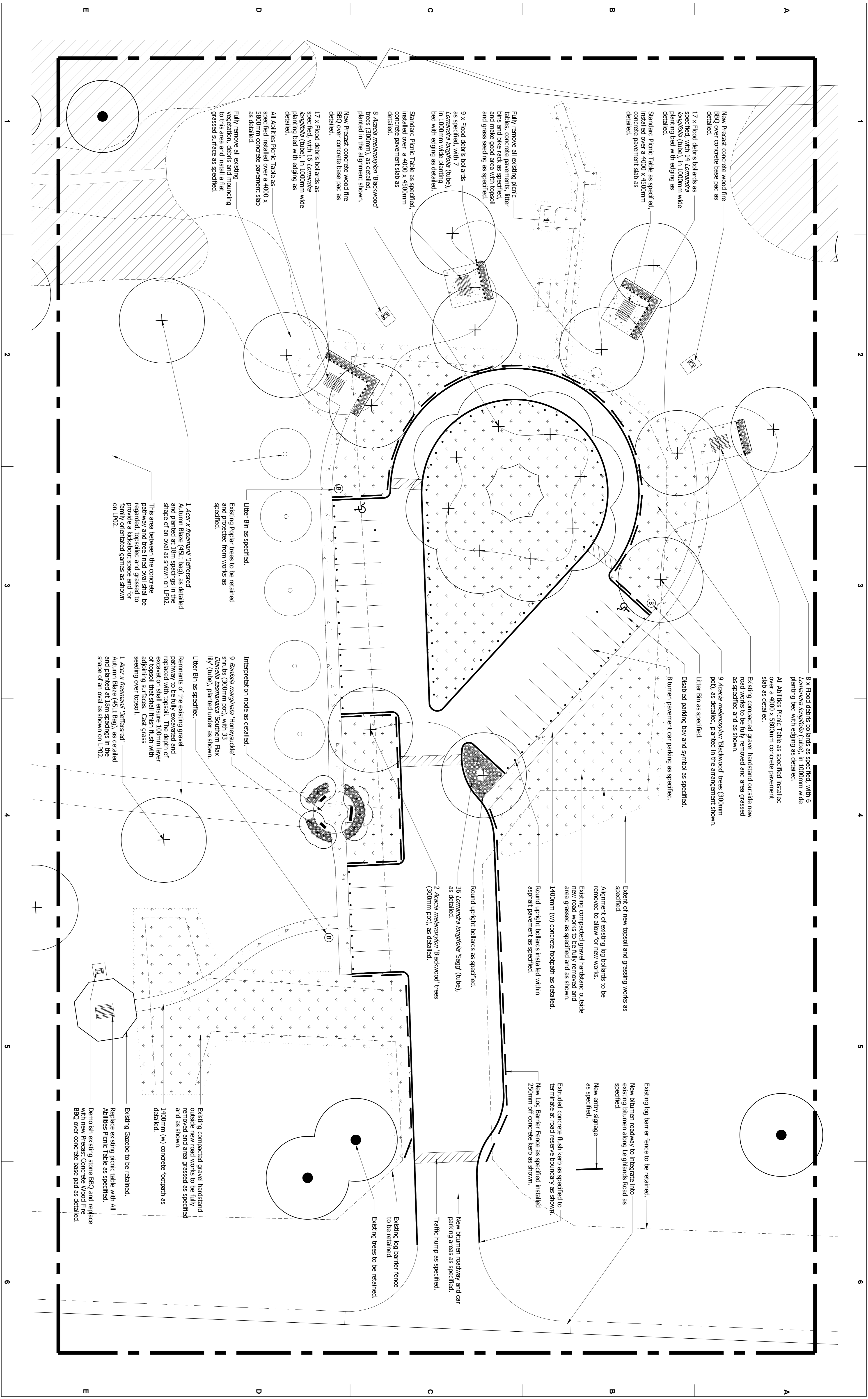
Landscape works drawings, associated specifications and details shall be read in conjunction with all other project consultants approved drawings including architectural, engineering, hydraulic, and electrical services.

DIAL BEFORE YOU DIG. Check all underground services prior to commencement of any works.

Ensure all dimensions are checked on site prior to commencement of landscape works. All dimensions shown on drawings and details are in millimeters unless noted otherwise.

PROJECT	
HONEYSUCKLE BANKS PARKLAND	
Leighlands Road, Evandale, Tasmania	
DRAWING TITLE	
LANDSCAPE PLAN	

DRAWING INFORMATION	
Scale Bar	North
0.1 2 5 10 20m	
Date	Project Stage
28/02/17	APPROVAL
DRAWING No.	Sheet
MMCHB1016 - LP02	Z18
Issue	
C	



CLIENT		ISSUE SCHEDULE	
	Issue	Description	Date
	A	Preliminary Issue	15/11/16
	B	Approval Issue	23/11/16
	C	Pathways removed	28/02/17

NOTES

Landscape works drawings, associated specifications and details shall be read in conjunction with all other project consultants approved drawings including architectural, engineering, hydraulic, and electrical services.

DIAL BEFORE YOU DIG. Check all underground services prior to commencement of any works.

Ensure all dimensions are checked on site prior to commencement of landscape works. All dimensions shown on drawings and details are in millimetres unless noted otherwise.

PROJECT

HONEYSOCKLE BANKS PARKLAND
 Leighlands Road, Evandale, Tasmania

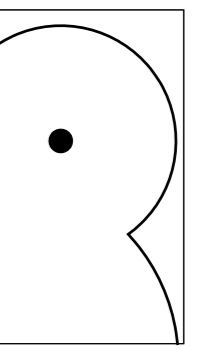
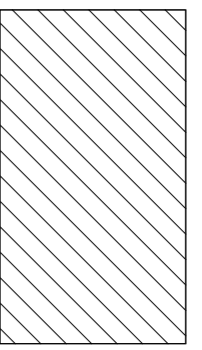
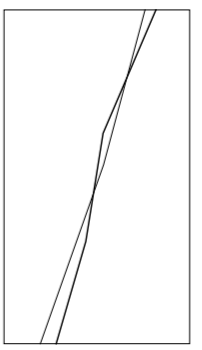
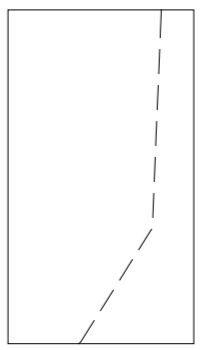
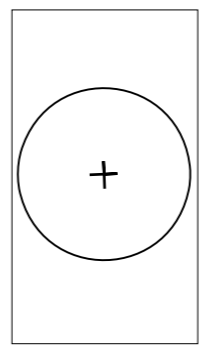
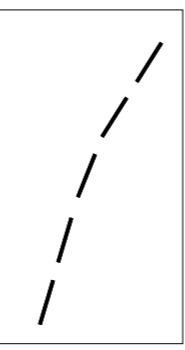
DRAWING TITLE

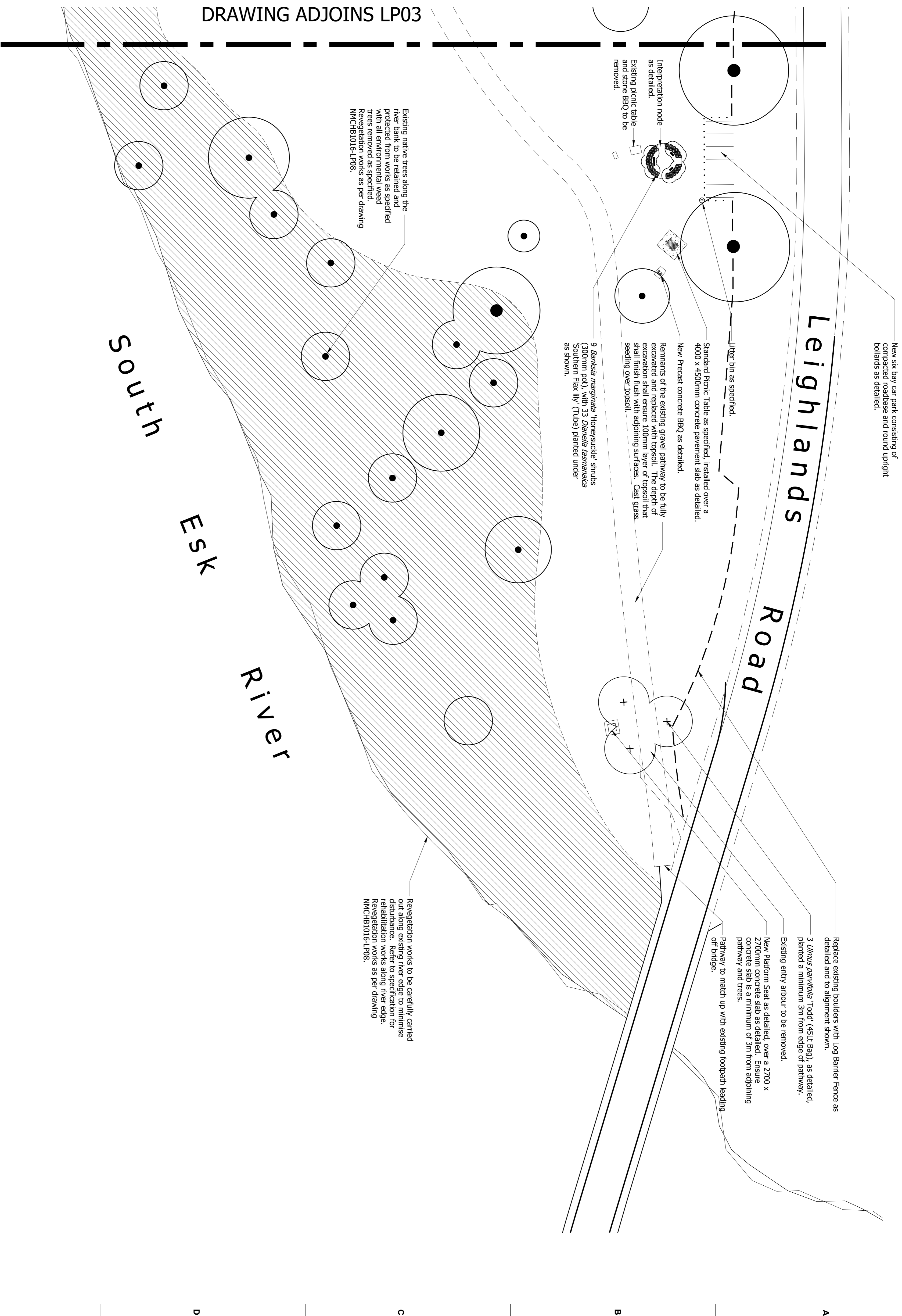
LANDSCAPE PLAN

DRAWING INFORMATION	
Scale Bar	North
Date	Project Stage
28/02/17	APPROVAL
DRAWING No.	Sheet
NMCHB1016 - LP03	3/8
	Issue
	C

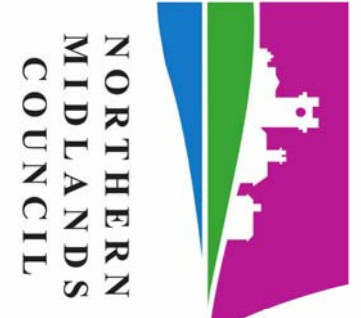
1 2 3 4 5 6

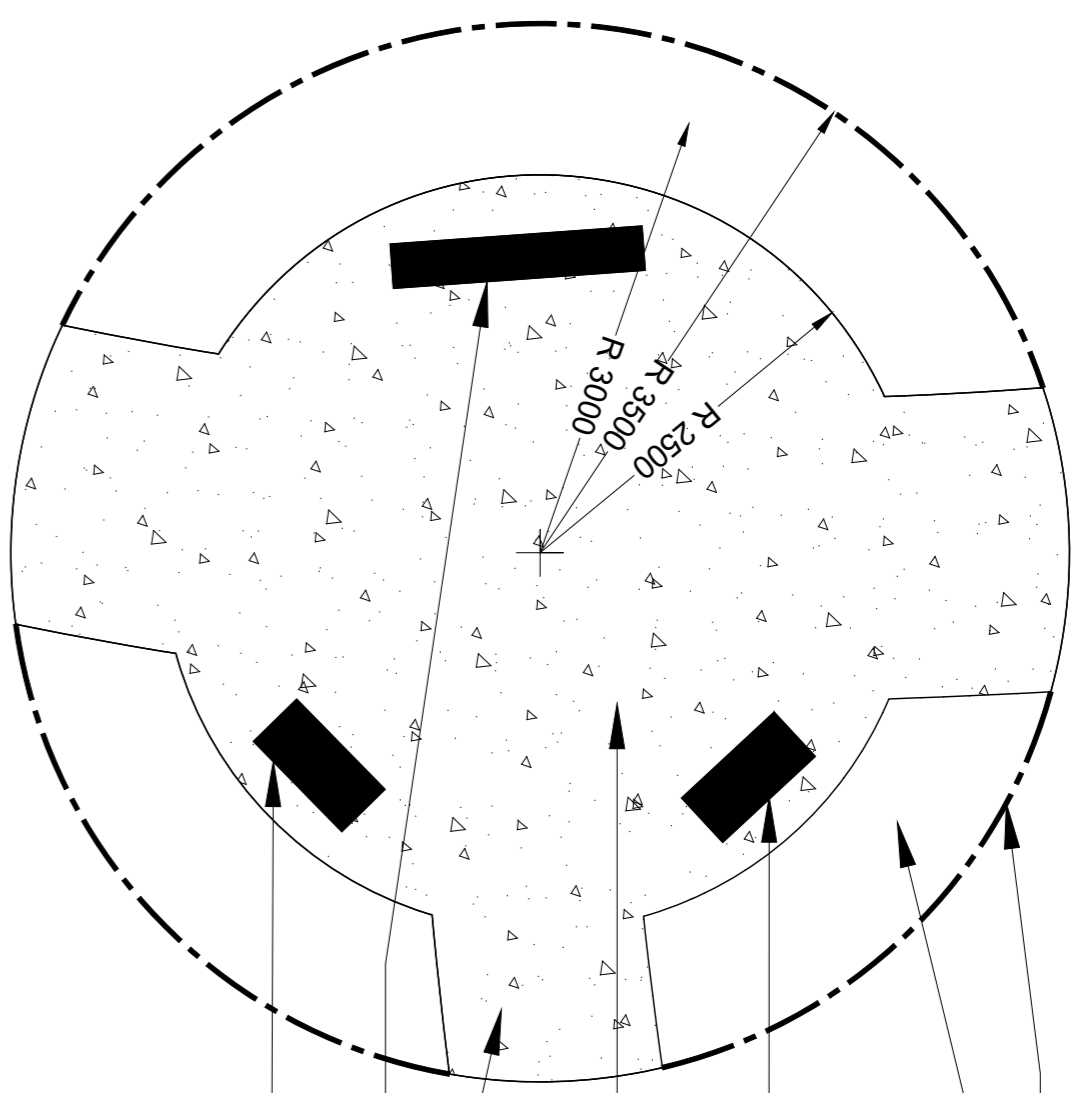
LEGEND

-  Existing trees to be retained and protected from works as specified.
-  Revegetation works as per drawing NMCB1016-LP08.
-  Existing river edge.
-  Extent of existing site features.
-  New trees as detailed.
-  New Log Barrier Fence as specified.



E	D	C	B	A	1	2	3	4	5	6	E
---	---	---	---	---	---	---	---	---	---	---	---

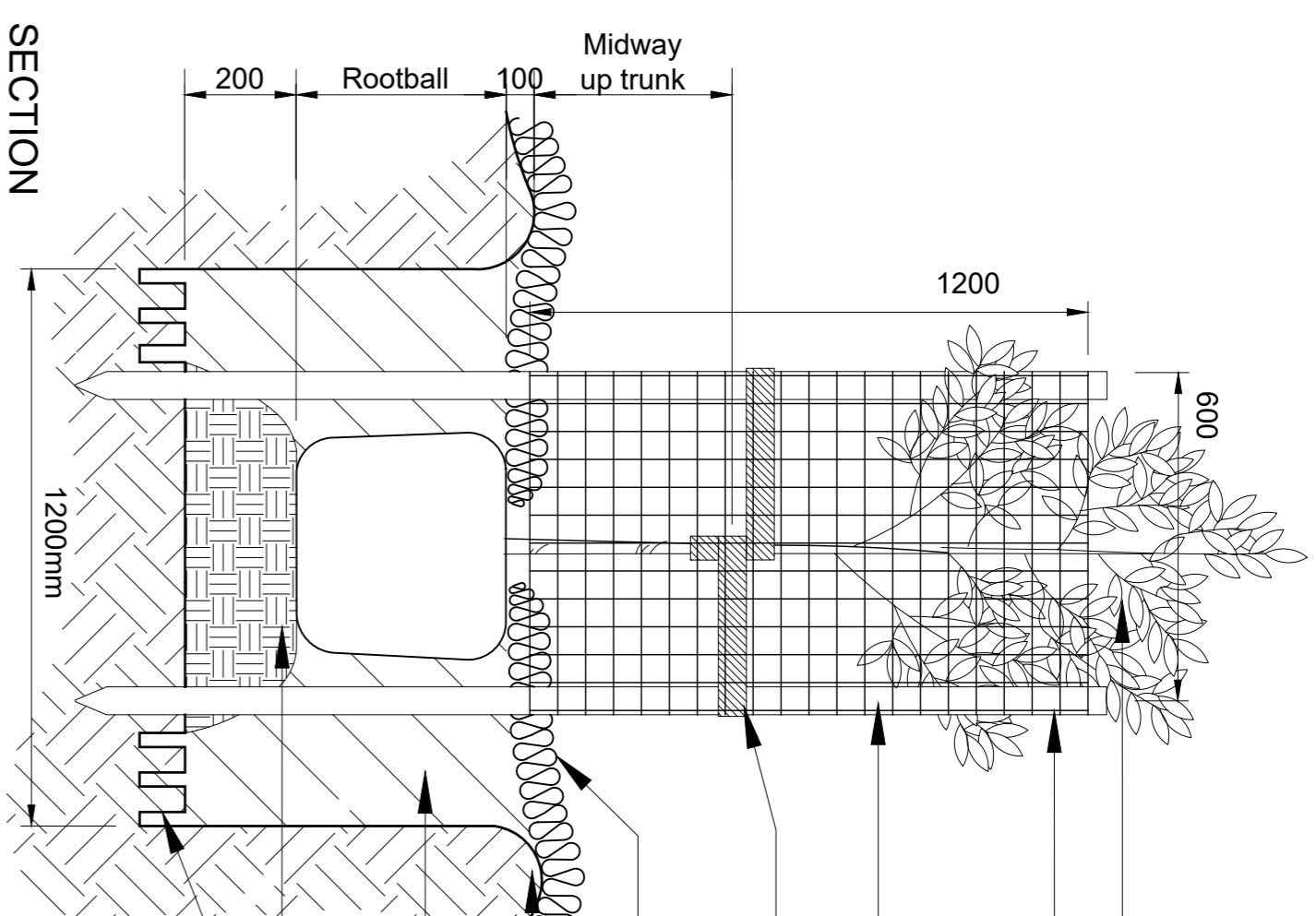
 <p>NORTHERN MIDLANDS COUNCIL</p>	CLIENT		ISSUE SCHEDULE		<p>NOTES</p> <p>Landscape works drawings, associated specifications and details shall be read in conjunction with all other project consultants approved drawings including architectural, engineering, hydraulic, and electrical services.</p> <p>DIAL BEFORE YOU DIG. Check all underground services prior to commencement of any works.</p> <p>Ensure all dimensions are checked on site prior to commencement of landscape works. All dimensions shown on drawings and details are in millimeters unless noted otherwise.</p>
	Issue	Description	Date		
	A	Preliminary Issue	15/11/16		
B	Approval Issue	23/11/16			
C	Pathways removed	28/02/17			
PROJECT		DRAWING TITLE		DRAWING INFORMATION	
<p>HONEYSUCKLE BANKS PARKLAND Leighlands Road, Evandale, Tasmania</p>		<p>LANDSCAPE PLAN</p>		<p>Scale Bar 0.1 2 5 10 20m North</p> <p>Date: 28/02/17 Project Stage: APPROVAL Sheet: 4/8 Drawing No.: NMCB1016 - LP04 Issue: C</p>	



- A Edging as detailed.
- B Planting area consisting of 200mm deep cultivated topsoil, and 100mm of GLEBE Compost Mulch to finish flush with adjoining surface.
- C Seat as detailed. Confirm set out on site.
- D Circular pavement shall be coloured concrete with a stippled wood float finish as specified and as detailed.
- E Three access points into the interpretation node.
- F Interpretation sign as detailed. Confirm set out on site.
- G Seat as detailed. Confirm set out on site.

PLAN

INTERPRETATION NODE

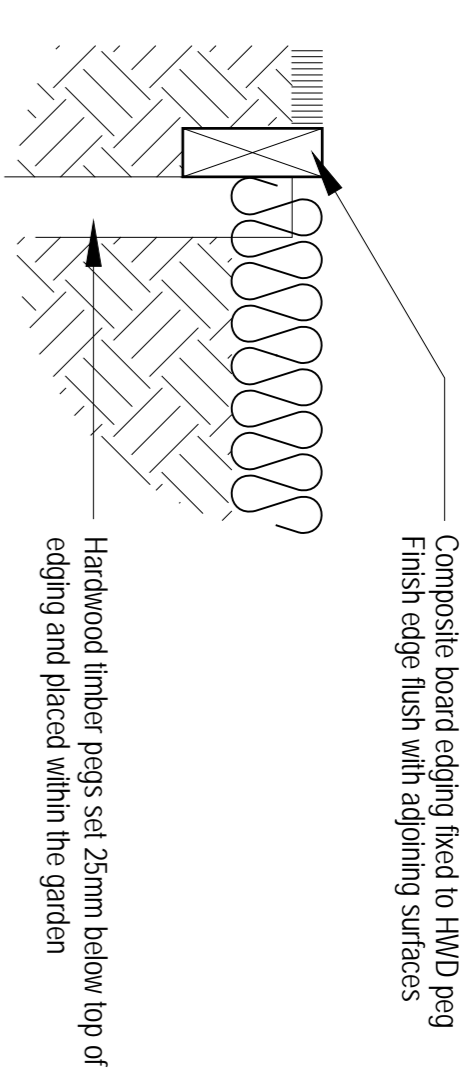


- A Tree where shown on the drawings.
- B 50mm grid mesh galvanised metal cage to fully enclose tree. Secure mesh to stakes with loop tags and screws.
- C Four 50 x 50 x 1800mm Hardwood timber stakes set in a square.
- D 50mm (w) Jute webbing tree tie, loosely looped around tree trunk and looped around timber stake.
- E Mulch layer as specified. Keep mulch away from tree trunk.
- F Provide a basin around the tree hole to hold 20 Litres of water.
- G Topsoil backfill as specified.
- H Setting mound.
- I Cultivate base of hole with excavator's bucket tines. Excavations made with a smooth blade bucket will not be accepted.

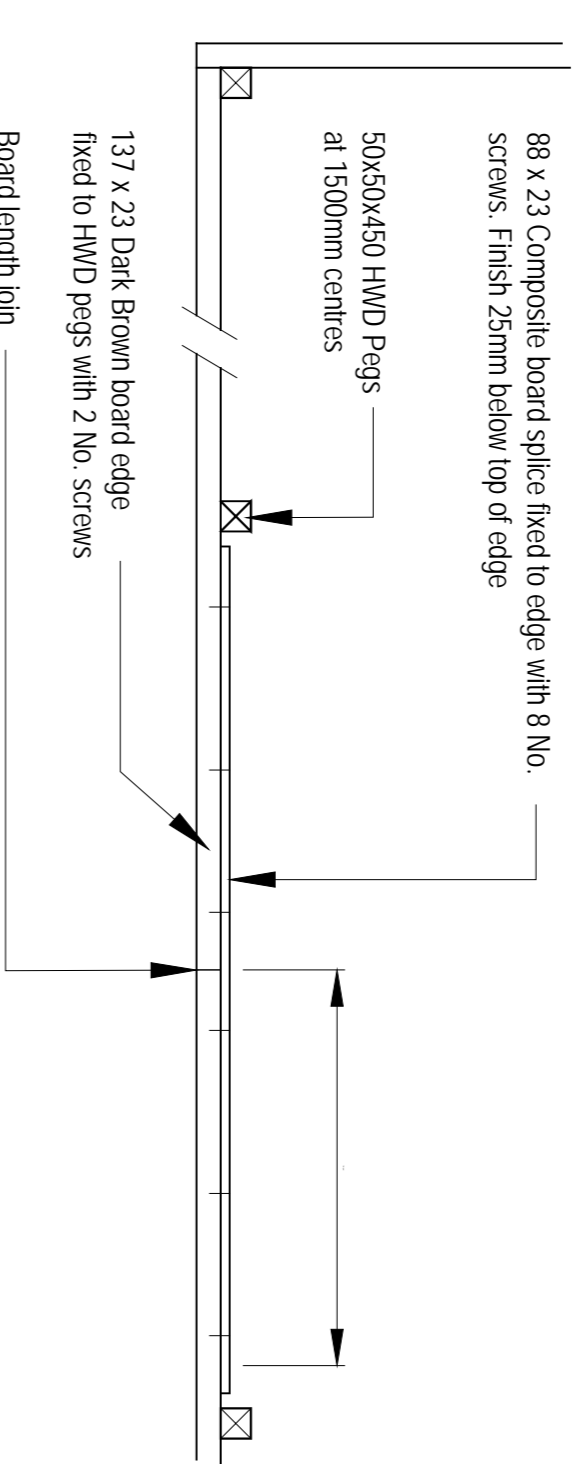
SECTION

300mm - 45LT TREE PLANTING

NOTE: TREES PLANTED IN A SMALLER HOLE THAN DETAILED WILL BE REMOVED AND RE-EXCAVATED AT THE CONTRACTORS EXPENSE.

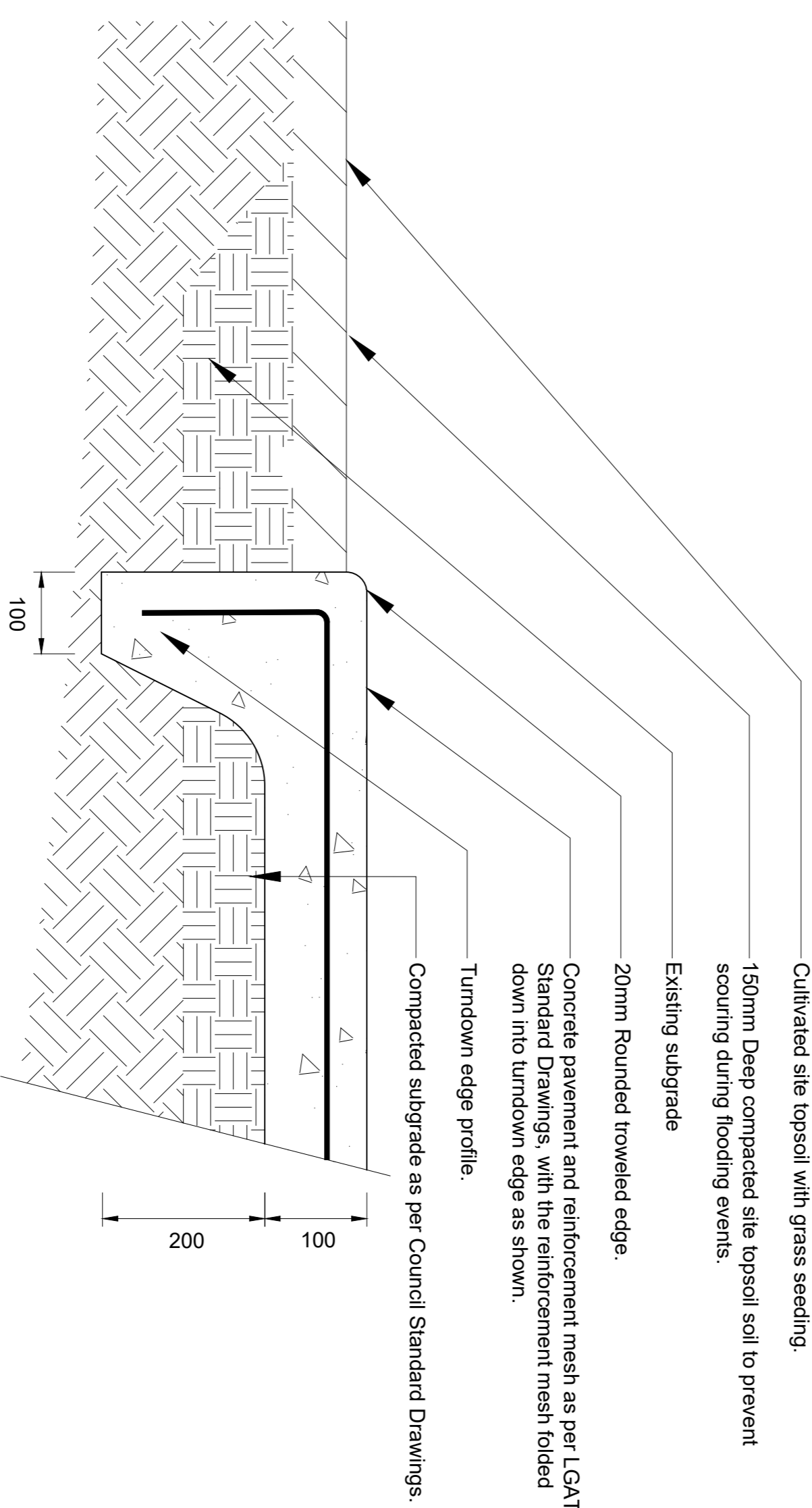


Section (Larger Scale)



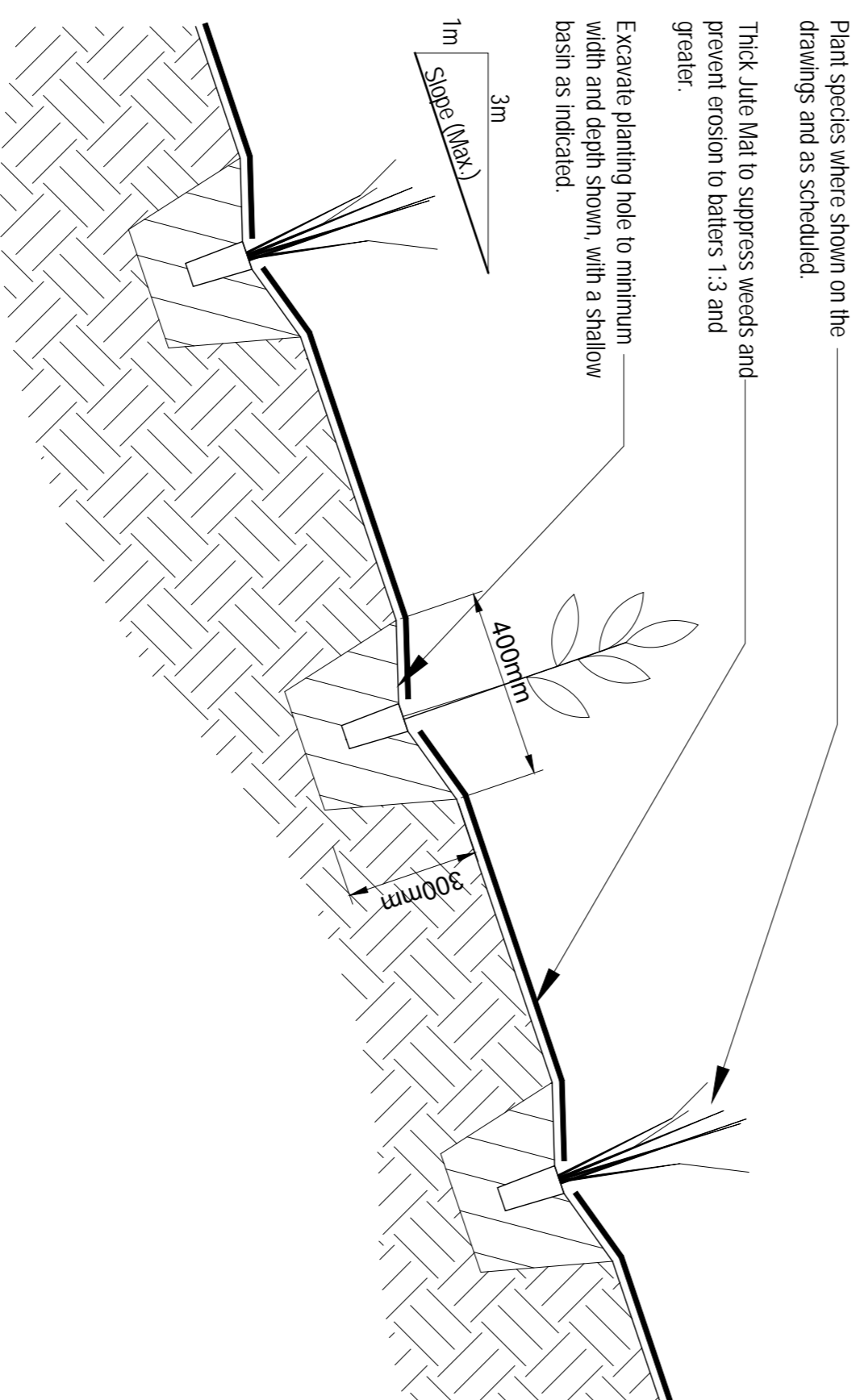
Plan

EDGING - Composite Board (Ekodeck or equal)



SECTION

TYPICAL CONCRETE PAVEMENT - Turndown Edge for Flood Proofing



SECTION

REVEGETATION PLANTING - Typical

1

2

3

4

5

6

E

M : 0412 336 381

ARN: 97468 721 622

PO Box 5017

Launceston TAS 5017

www.langedesign.com.au

leon@langedesign.com.au

LANG
design

landscape architecture



NORTHERN MIDLANDS COUNCIL

CLIENT	ISSUE SCHEDULE	DATE
NORTHERN MIDLANDS COUNCIL	Issue 1 Description	
	A Preliminary Issue	15/11/16
	B Approval Issue	23/11/16
	C Detail Updated	28/02/17

NOTES

Landscape works drawings, associated specifications and details shall be read in conjunction with all other project consultants approved drawings including architectural, engineering, hydraulic, and electrical services.

DIAL BEFORE YOU DIG. Check all underground services prior to commencement of any works.

Ensure all dimensions are checked on site prior to commencement of landscape works. All dimensions shown on drawings and details are in millimeters unless noted otherwise.

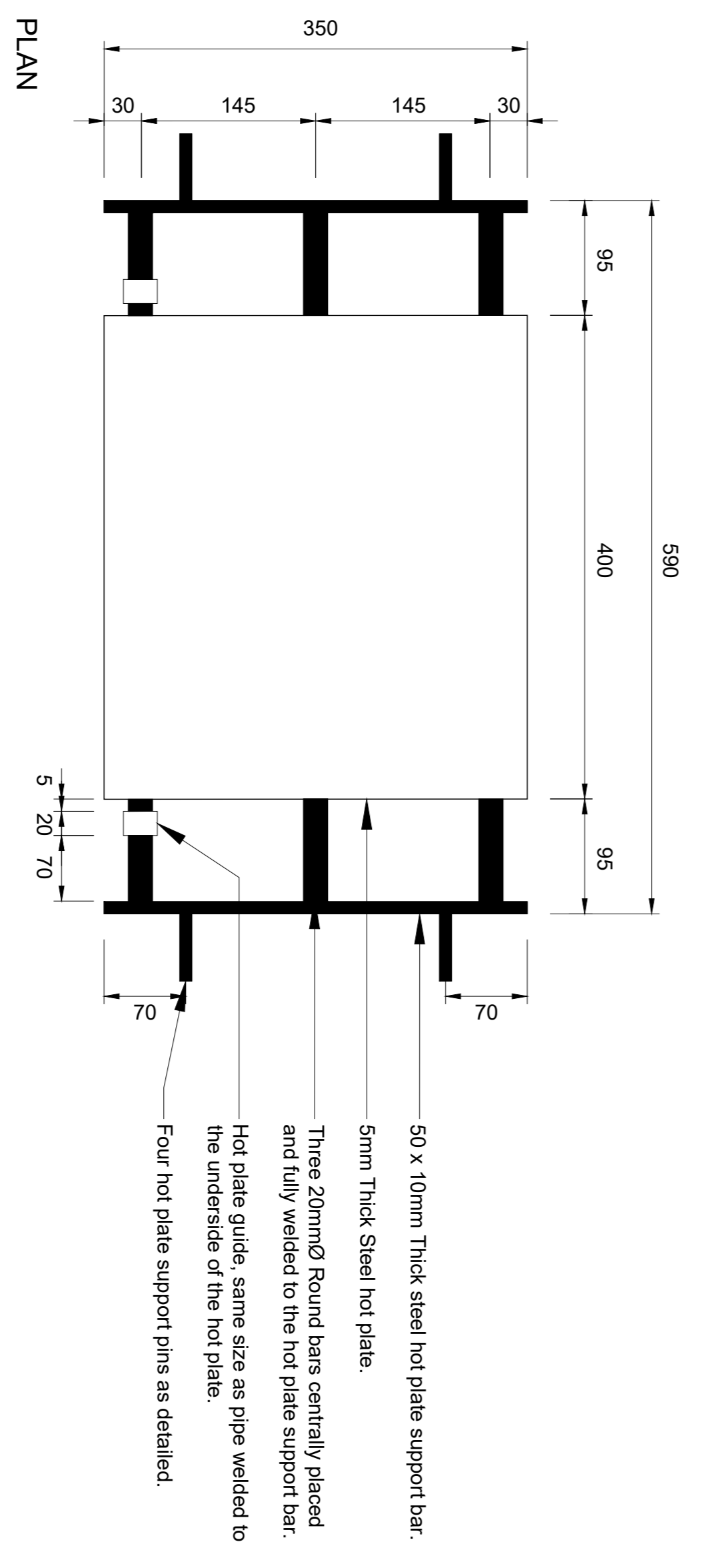
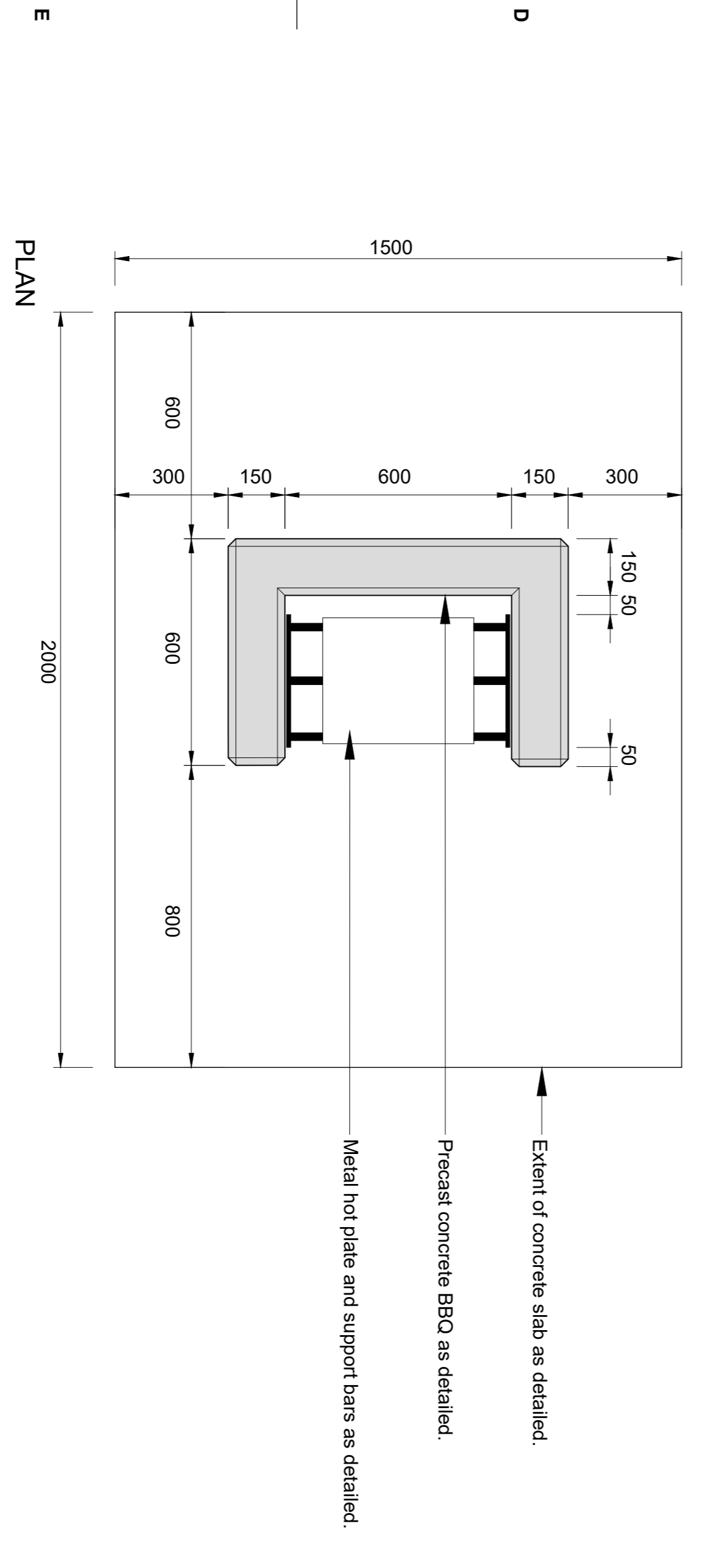
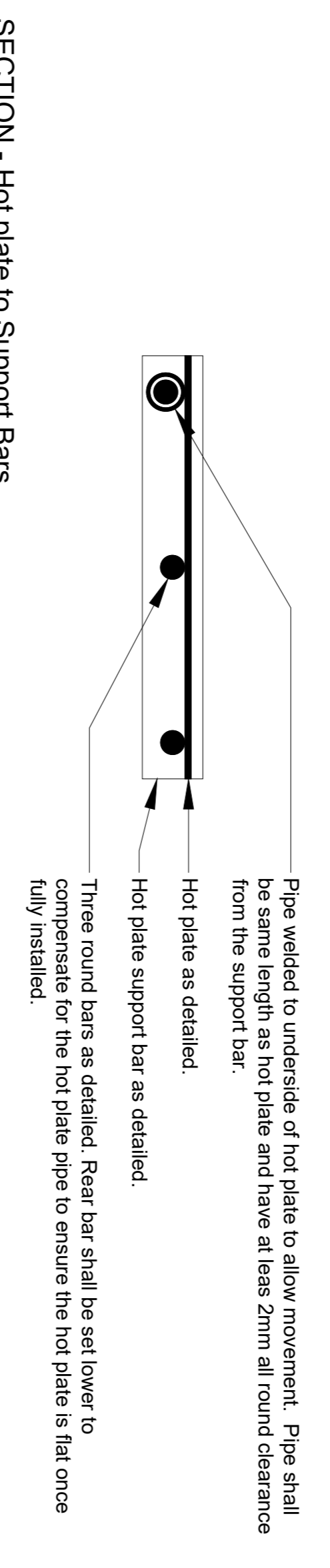
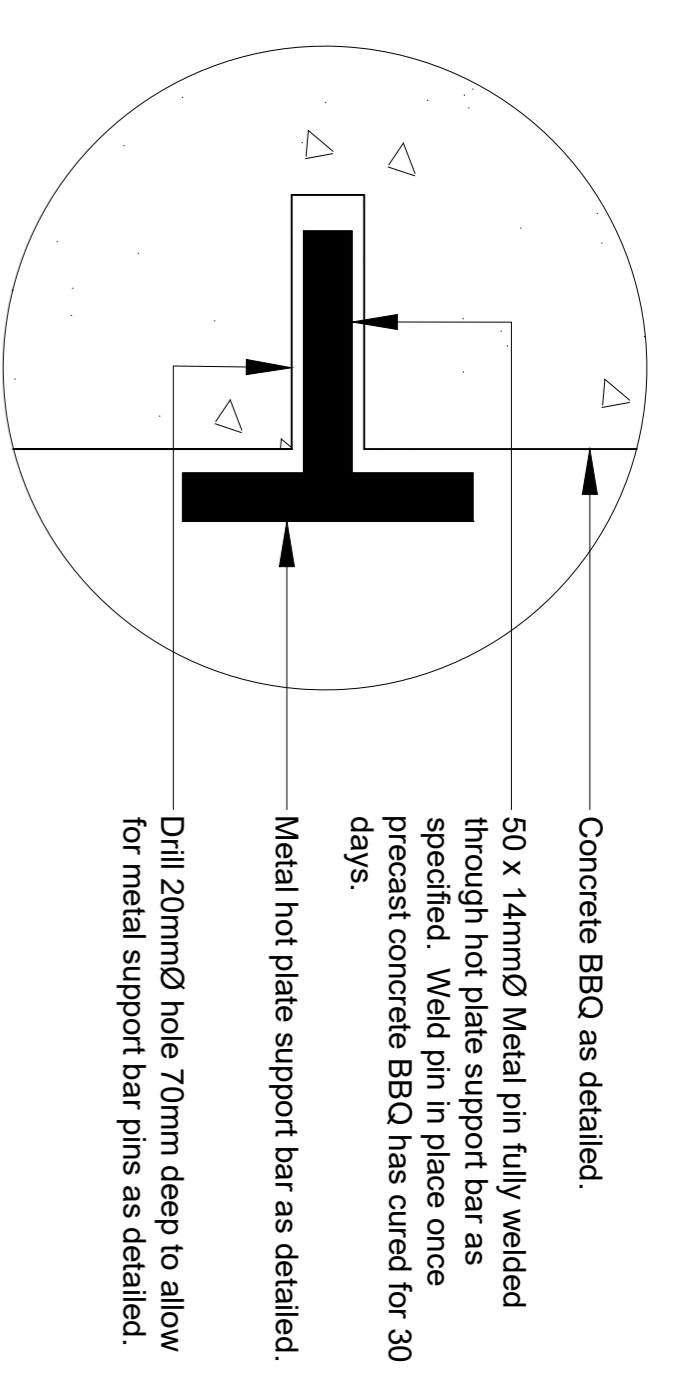
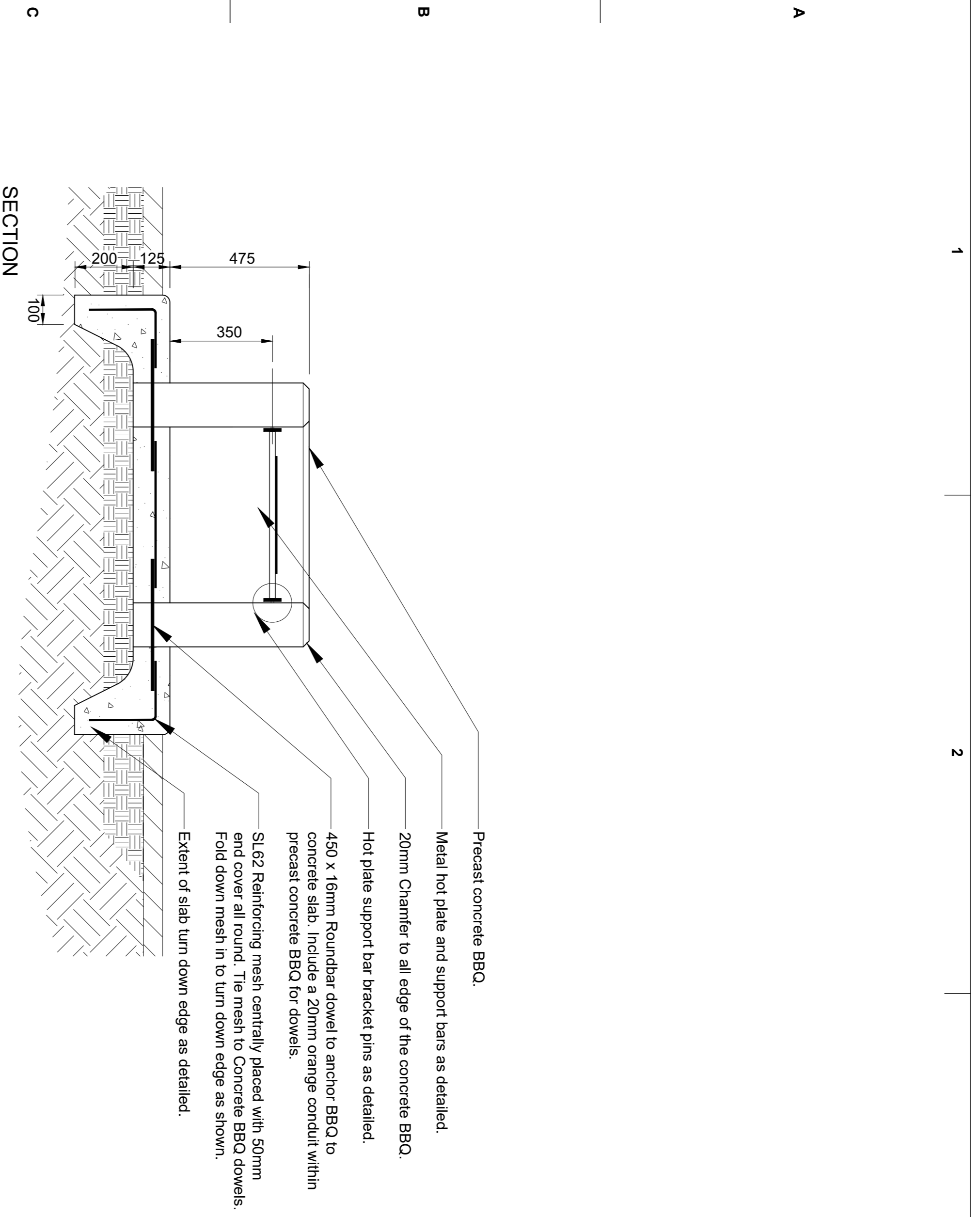
PROJECT

HONEYSUCKLE BANKS PARKLAND
Leighlands Road, Evandale, Tasmania

DRAWING TITLE

LANDSCAPE DETAILS

DRAWING INFORMATION	
Scale Bar	North
Date	Project Stage
28/02/17	APPROVAL
DRAWING No.	Sheet
NMCHB1016 - LP05	5/8
	Issue
	C



PRECAST CONCRETE WOOD FIRE BBQ

METAL HOT PLATE AND SUPPORT BARS

1	2	3	4	5	6
---	---	---	---	---	---

CLIENT	ISSUE SCHEDULE		
	Issue	Description	Date
NORTHERN MIDLANDS COUNCIL	A	Preliminary Issue	15/11/16
	B	Approval Issue	23/11/16

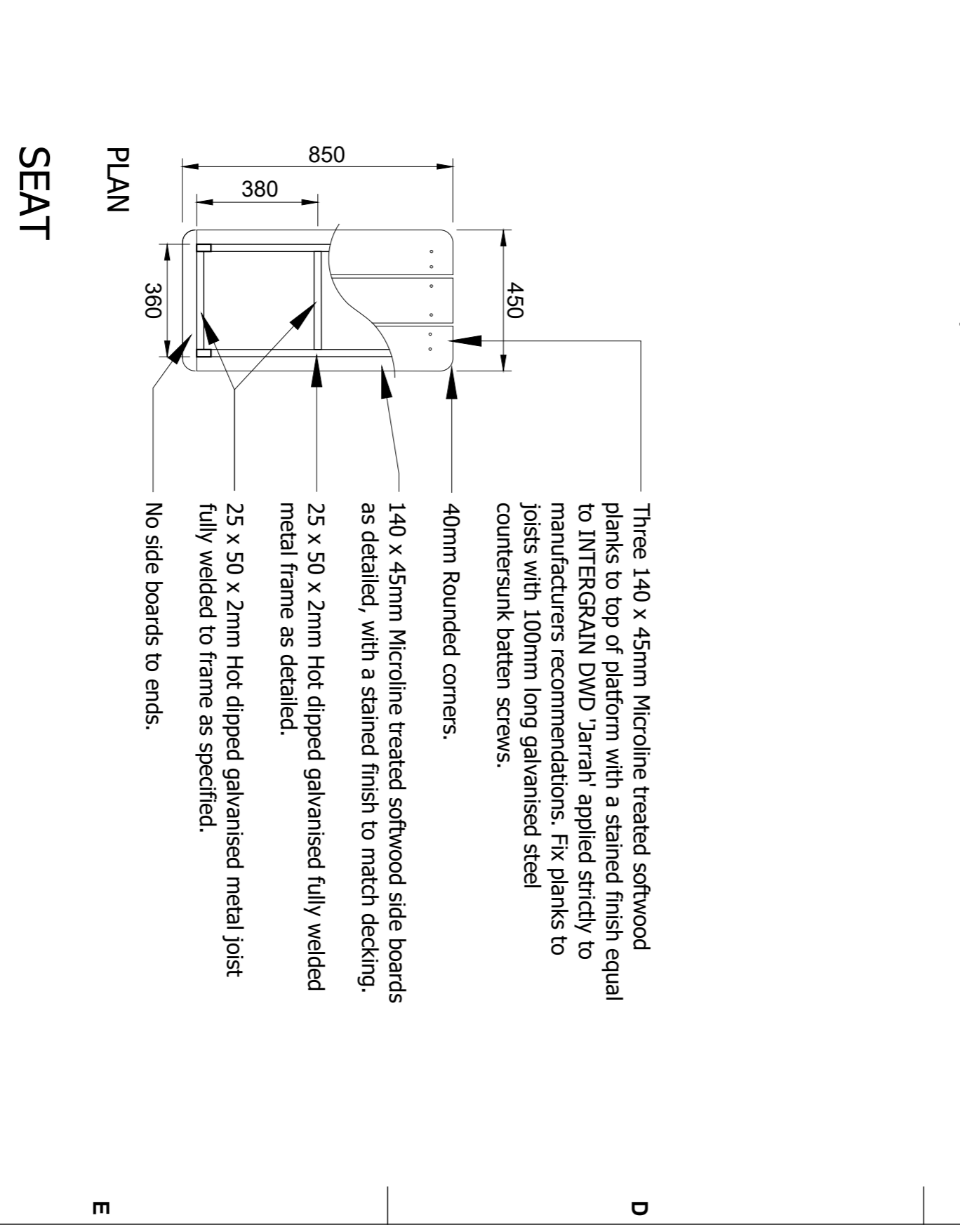
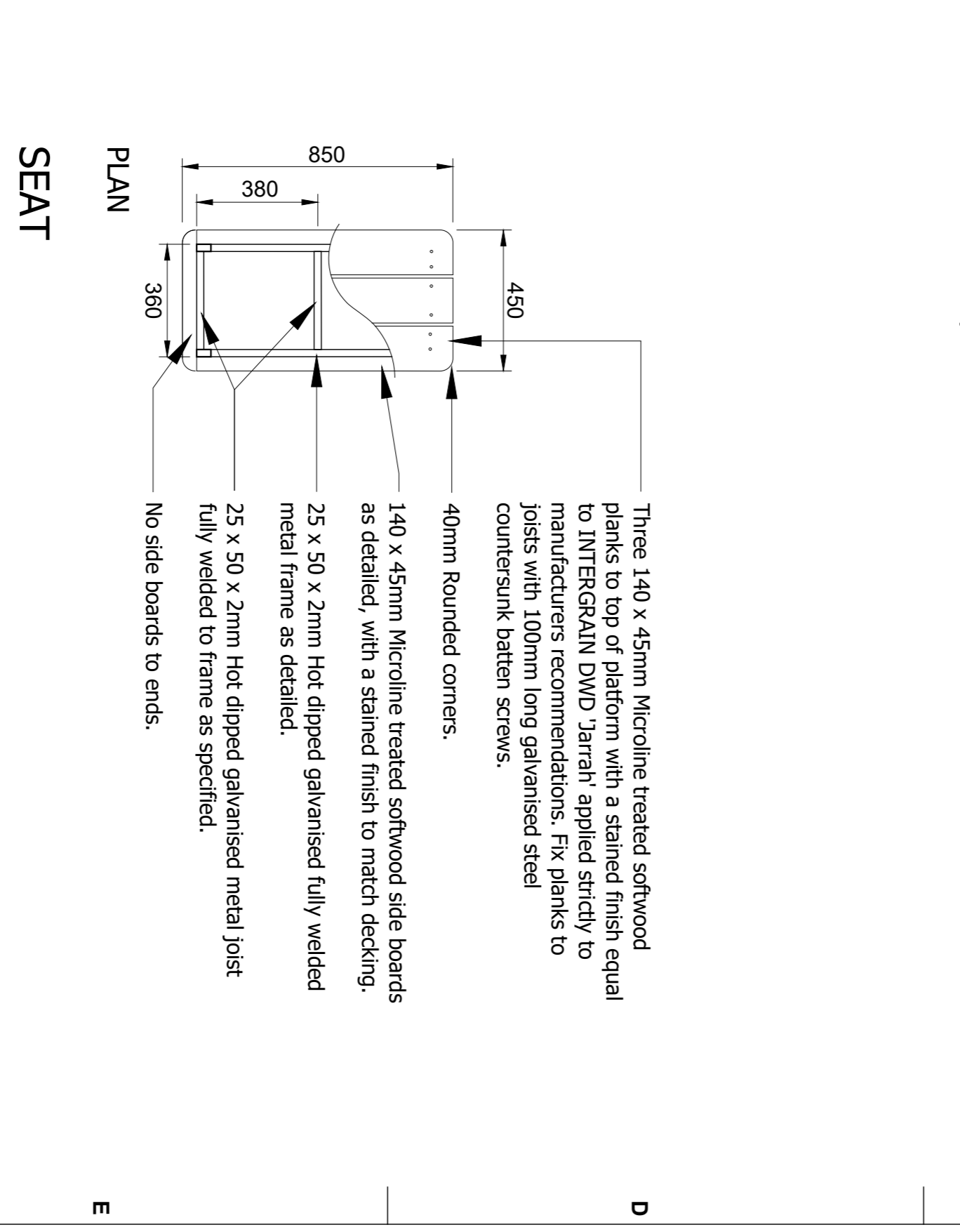
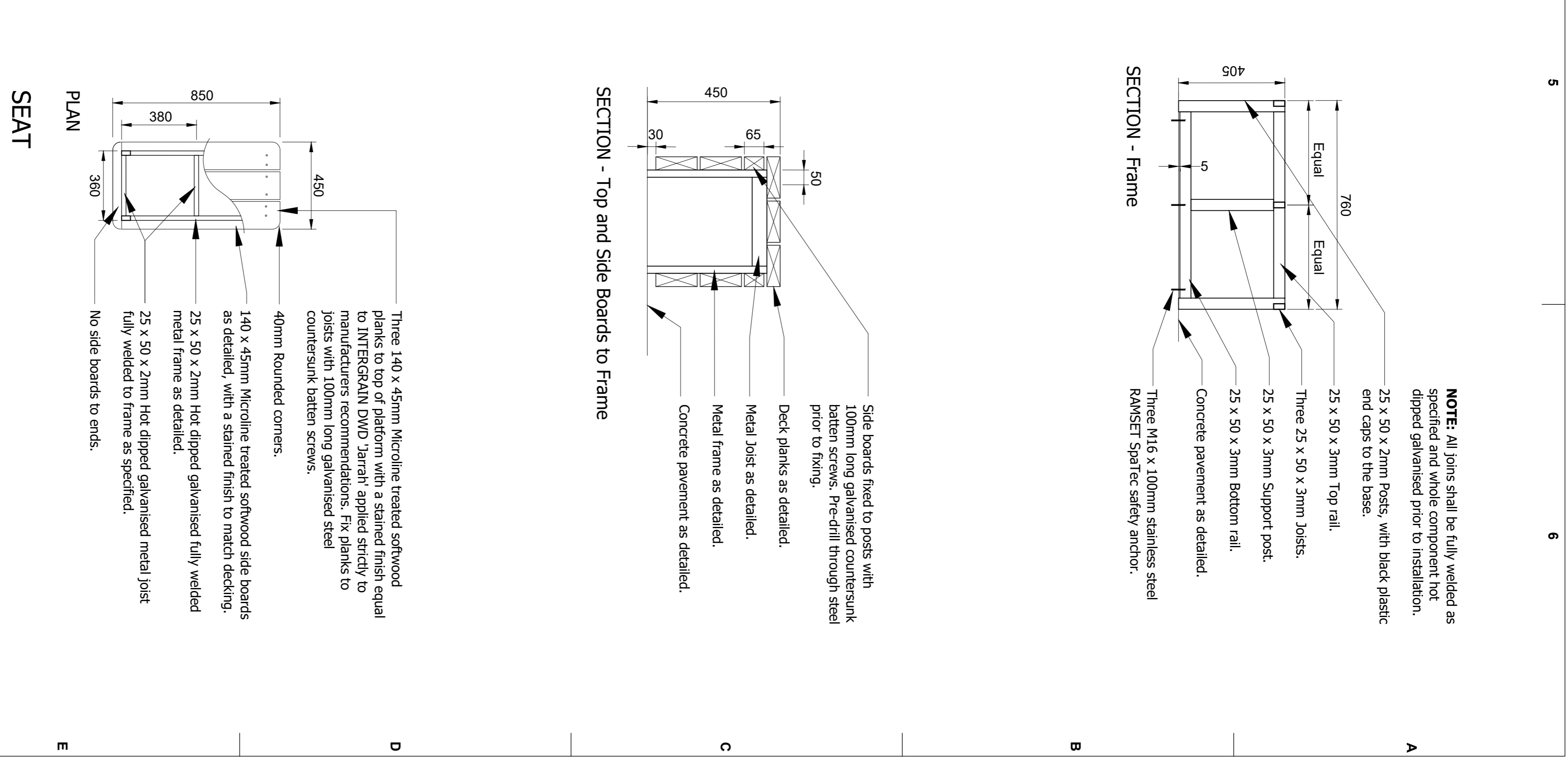
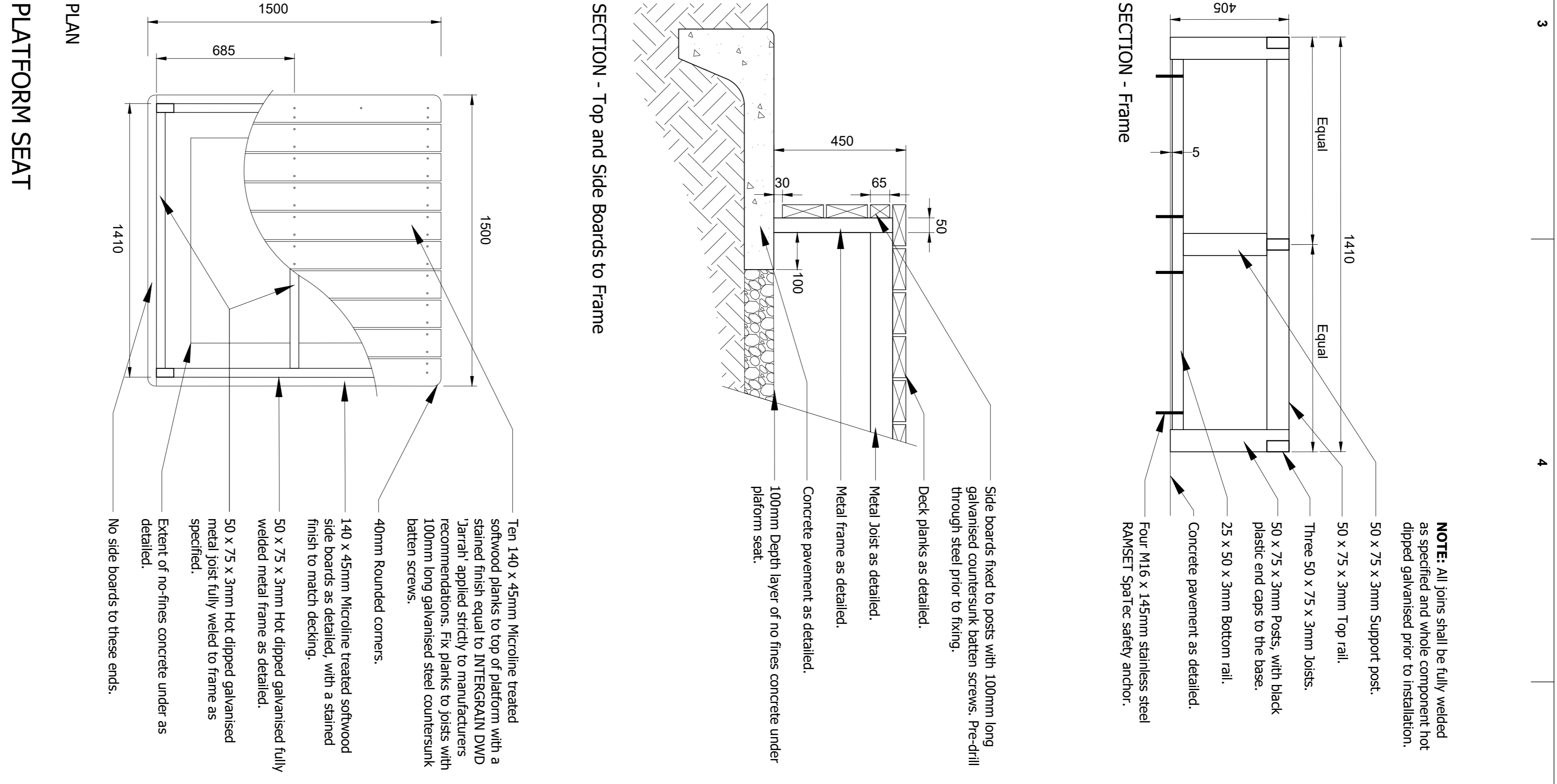
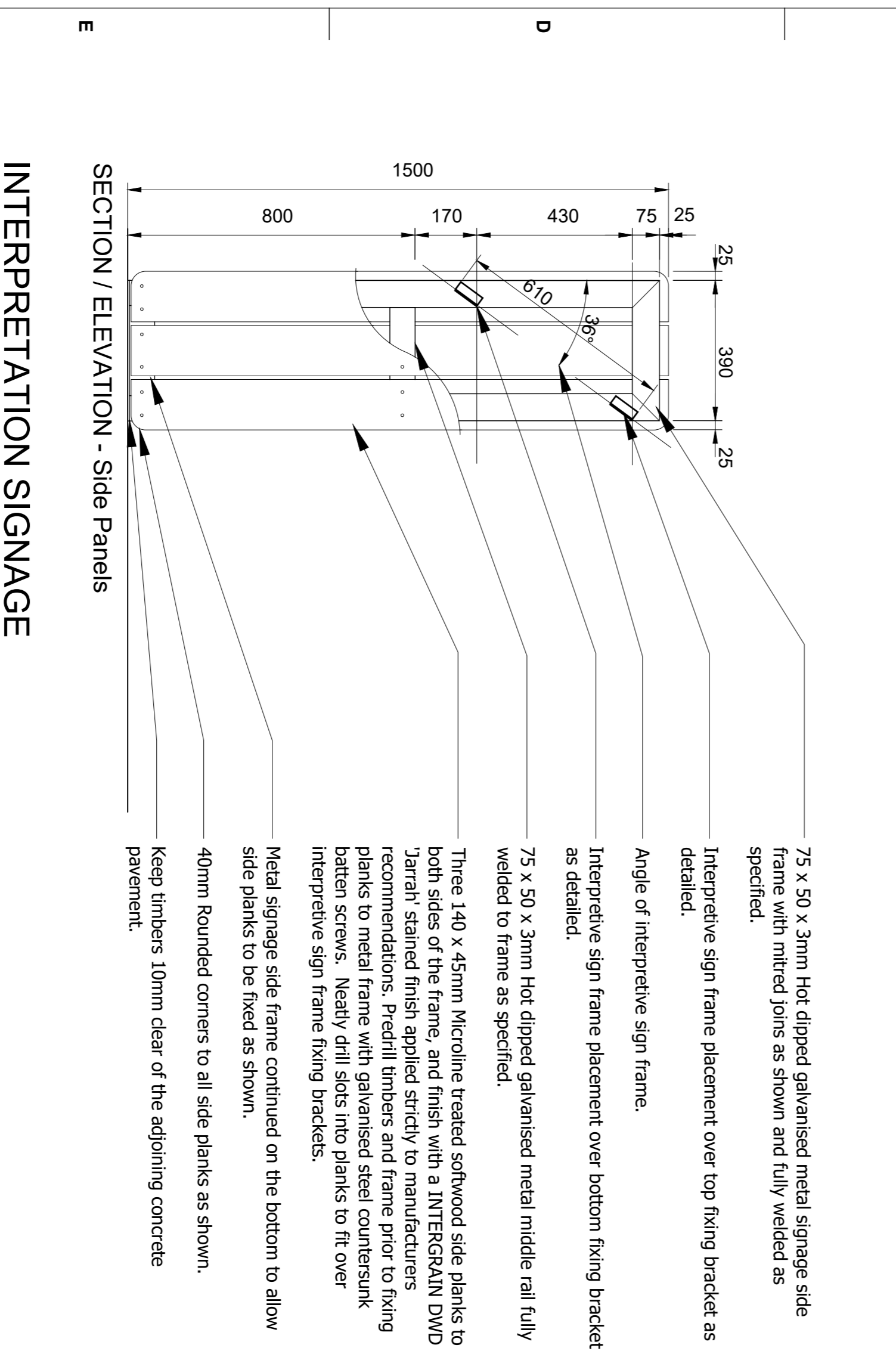
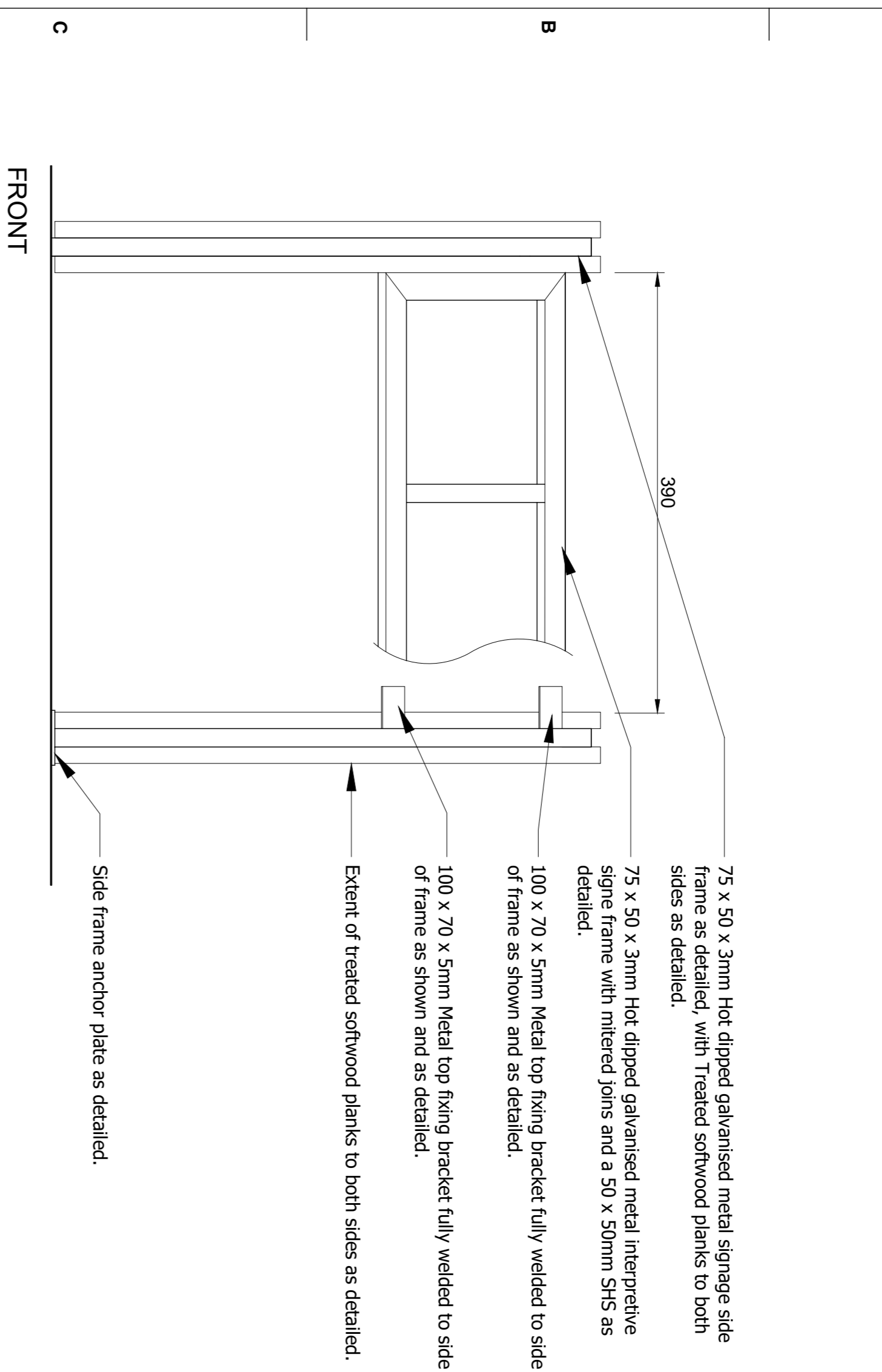
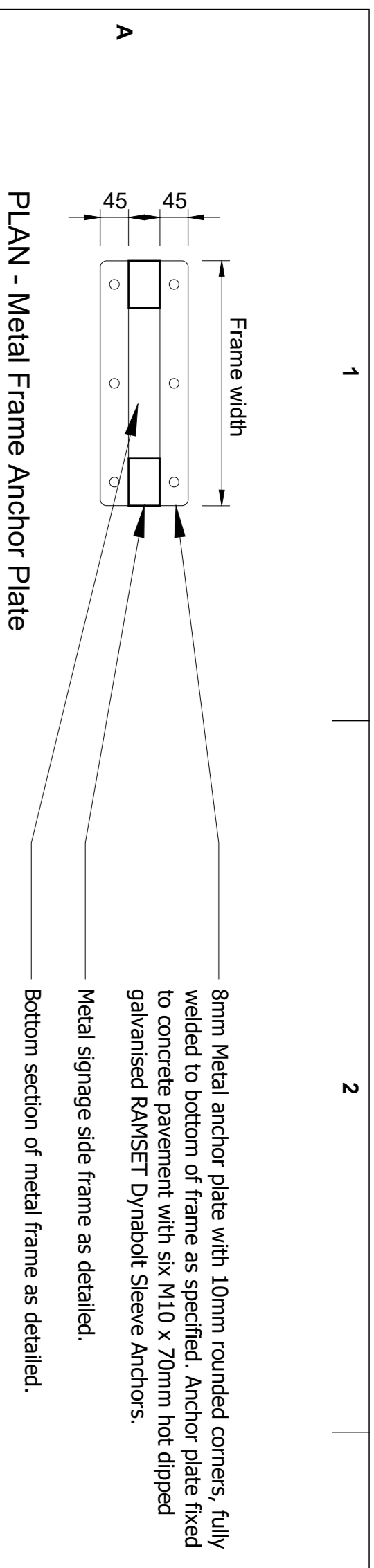
NOTES

Landscape works drawings, associated specifications and details shall be read in conjunction with all other project consultants approved drawings including architectural, engineering, hydraulic, and electrical services.

DIAL BEFORE YOU DIG. Check all underground services prior to commencement of any works.

Ensure all dimensions are checked on site prior to commencement of landscape works. All dimensions shown on drawings and details are in millimeters unless noted otherwise.

PROJECT	DRAWING INFORMATION	
HONEYSUCKLE BANKS PARKLAND Leighlands Road, Evandale, Tasmania	Scale Bar	North
DRAWING TITLE	Date	Project Stage
LANDSCAPE DETAILS	23/11/16	APPROVAL
	DRAWING No.	Sheet
	NMCHB1016 - LP06	6/8
		Issue
		B



INTERPRETATION SIGNAGE

PLATFORM SEAT

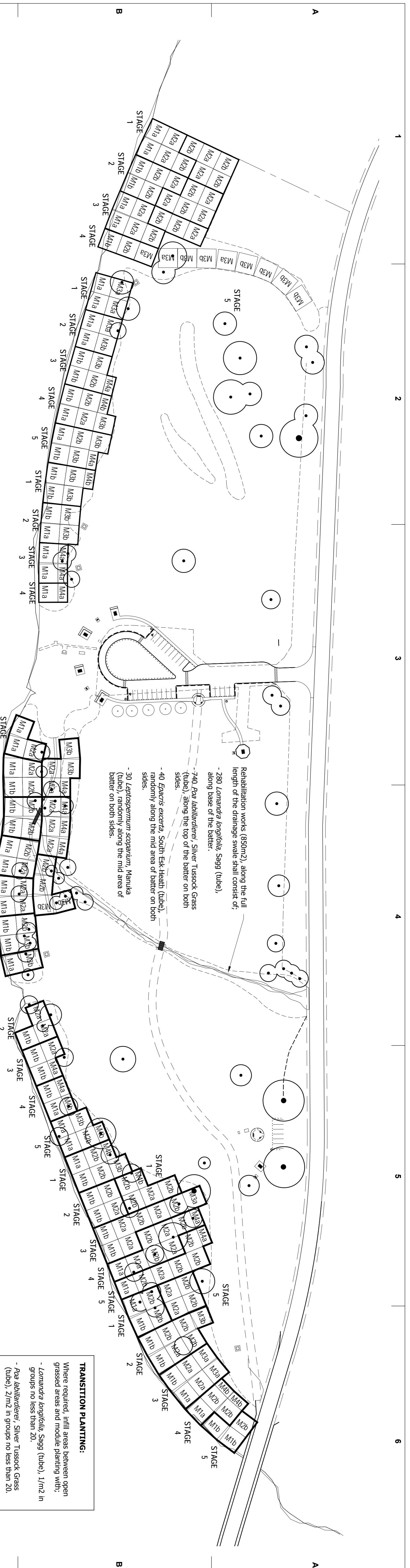
SEAT

1	2	3	4	5	6
---	---	---	---	---	---

CLIENT	ISSUE SCHEDULE	NOTES
NORTHERN MIDLANDS COUNCIL	Issue Description	Landscape works drawings, associated specifications and details shall be read in conjunction with all other project consultants approved drawings including architectural, engineering, hydraulic, and electrical services.
	A Preliminary Issue	
	B Approval Issue	DUAL BEFORE YOU DIG. Check all underground services prior to commencement of any works.
		Ensure all dimensions are checked on site prior to commencement of landscape works. All dimensions shown on drawings, and details are in millimeters unless noted otherwise.

PROJECT	DRAWING TITLE
HONEYSUCKLE BANKS PARKLAND Leighlands Road, Evandale, Tasmania	LANDSCAPE DETAILS

DRAWING INFORMATION	North
Scale Bar	
Date: 23/11/16	Project Stage: APPROVAL
Sheet: 7/8	Issue: B
DRAWING No. NMCHB1016 - LP07	



PLANT SCHEDULE (Per Module)

SYM	BOTANICAL NAME	COMMON NAME	POT	M1a	M1b	M2a	M2b	M3a	M3b	M4a	M4b
Grasses	<i>Lomandra longifolia</i>	Sagg	Tube	40	38	25	25	11	25	10	16
	<i>Poa labillardierei</i>	Silver Tussock Grass	Tube	24	28	-	26	42	14	22	680
	<i>Themeda triandra</i>	Kangaroo Grass	Tube	14	16	-	54	30	18	16	620
Shrubs	<i>Erigeron excelsus</i>	South Esk Heath	Tube	7	8	17	17	9	10	6	3
	<i>Lepidospernum scoparium</i>	Manuka	Tube	11	16	15	15	11	12	3	5
Trees	<i>Acacia axillaris</i>	Mildred's Wattle	Tube	7	-	12	12	8	-	1	-
	<i>Banksia marginata</i>	Silver Banksia	Tube	7	4	15	15	7	4	5	2
	<i>Eucalyptus amargosa</i>	Black Peppermint	Tube	6	7	8	8	7	2	3	3
	<i>Eucalyptus ovata</i>	Swamp Gum	Tube	3	5	8	8	4	6	2	2
											223
Stage 1											1062
Stage 2											1025
Stage 3											1243
Stage 4											1179
Stage 5											1071

SPECIFICATION NOTES

- GENERALITY**
- This drawing shall be printed out at A1 size and preferably laminated for site works.
- The spatial arrangement of this plan is based upon aerial photography and not a detailed site survey of the site. It is recommended that a detailed site survey be conducted prior to construction and that on the ground, and it is recommended to either report these to Council's representative or make adjustments on-site as they are encountered.
- STAGING OF WORKS**
- The layout and arrangement of the rehabilitation planting modules are designed to be staging over a 1 year period, unless planned otherwise.
- The staging of the modules reduces the need for broad clearing along the river bank and ensures existing stabilised areas assist in protecting new rehabilitated areas during flooding periods. It is therefore of high importance that the on-going maintenance of new rehabilitated areas is performed to eliminate weed species from re-establishing.
- NRM NORTH**
- 18 months prior to commencing any on ground rehabilitation works of the areas depicted on the drawings, NRM North must be contacted and made aware of the proposed project.
- EXISTING TREES**
- All native vegetation shall be retained and protected from works. Cutting or removal of limbs where required shall be confirmed with Council's representative prior to any works.
- WEED REMOVAL**
- All environmental weeds shall be removed from site in accordance with local and state legislation and recommendations, including pulling, cutting, spraying, removing and disposal. Willow species shall be performed in accordance with local and state legislation, and cut down and debris fully removed from site, with roots and stumps removed to stabilised river bank.
- Habitat Elements:** Where possible, logs (from native trees), boulders and other natural structures shall be arranged throughout the rehabilitation area to provide habitat for local fauna and as a form of flood protection for newly planted areas.

PLANTING WORKS

Where possible, plants for this project shall be sourced from site harvested seed and/or cuttings to ensure the sustainability and enhancement of the local ecosystem is achieved.

For trees and shrubs, 'long stem' stock is preferred over standard tube stock.

It is recommended that all plants are grown at various nurseries to avoid complications with growing conditions and availability.

TREE GUARDS

Use white mulch or plastic tree guards around shrubs and trees. Use mulch mats around plants, with mulch dispersed between plantings to suppress weeds as specified.

MULCHING

All revegetation areas shall include a layer of 'TREENAX Sure Juice Thick' or similar. Juice shall be secured in place with 450mm long metal staples as per manufacturers recommendations. Mulch shall be installed to ensure flood waters do not undermine the matting and wash the matting away.

WATERING

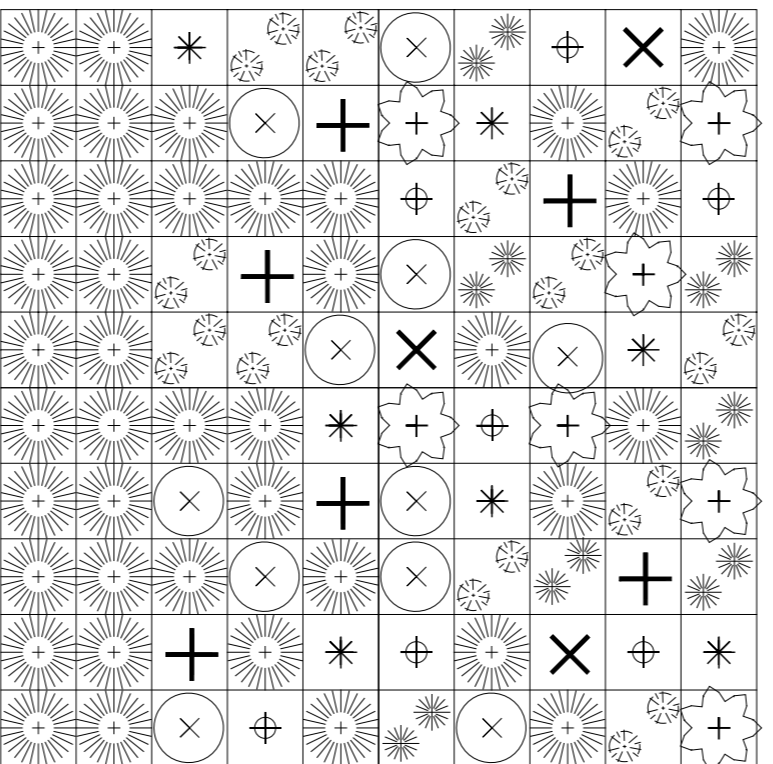
All plants shall be watered for the first two weeks of planting.

Preferably, plants shall be performed during the wetter periods of the year. Outside these periods, plants shall be watered using temporary irrigation systems or sprinklers set up using water from a watering truck shall be used.

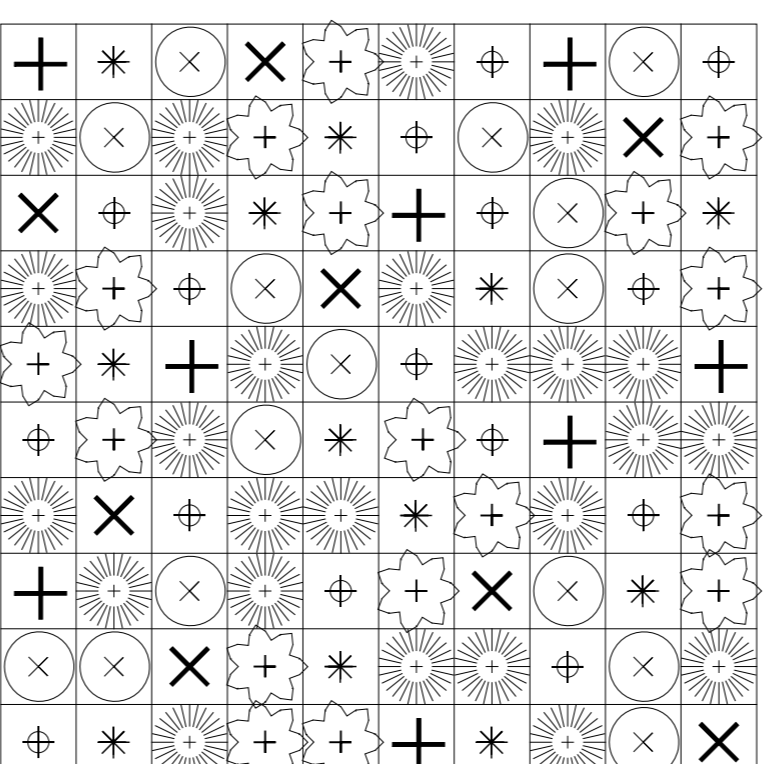
MAINTENANCE:

Continual maintenance of newly rehabilitated areas is of significant importance in establishing a successful project. The continual monitoring of plant health ensures strong growth and quick establishment of the rehabilitated river bank.

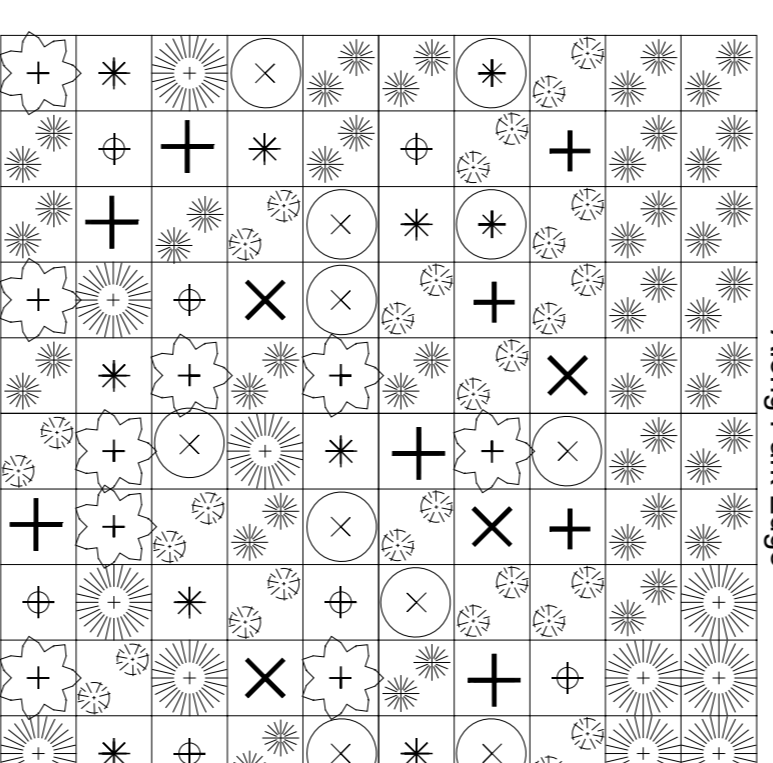
Weeds: All weeds must be eliminated as soon as possible and mulch debris maintained.



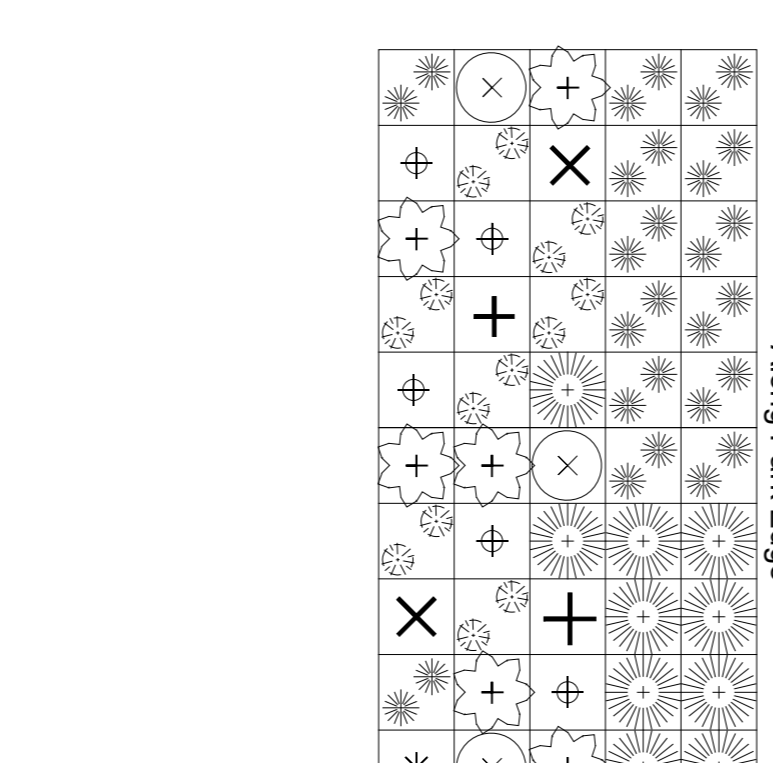
MODULE 1a (M1a)



MODULE 2a (M2a)



MODULE 3a (M3a)



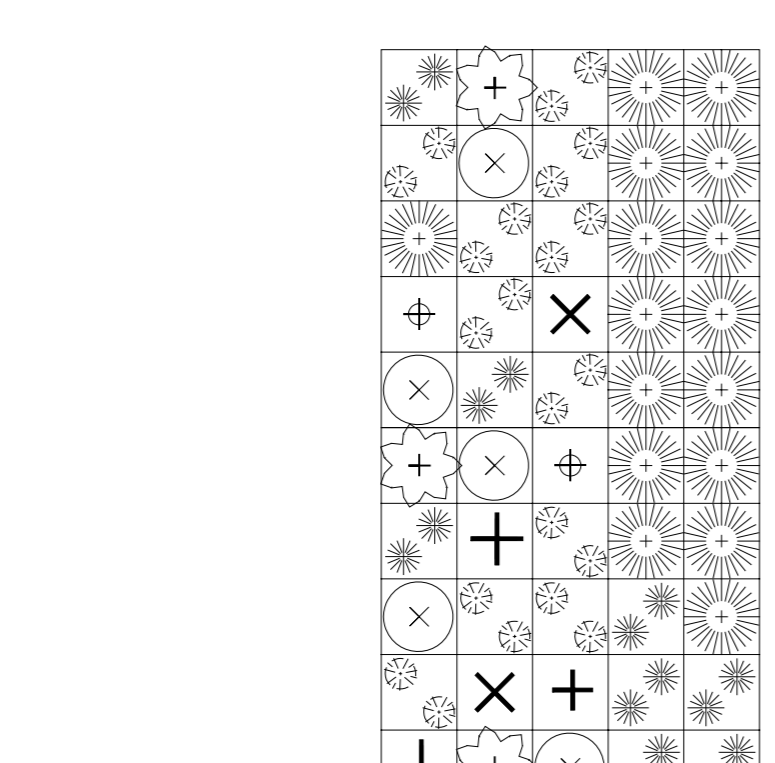
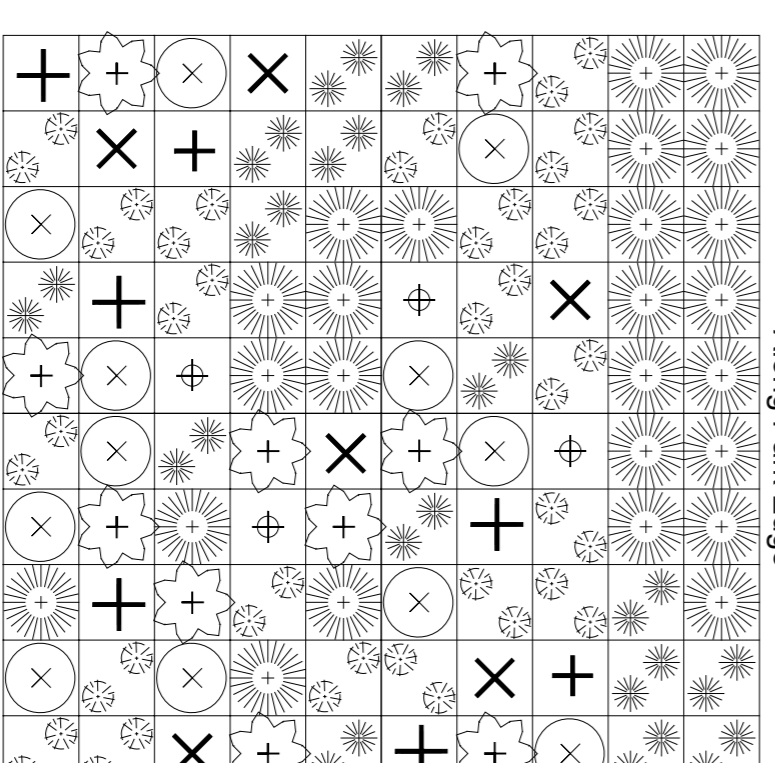
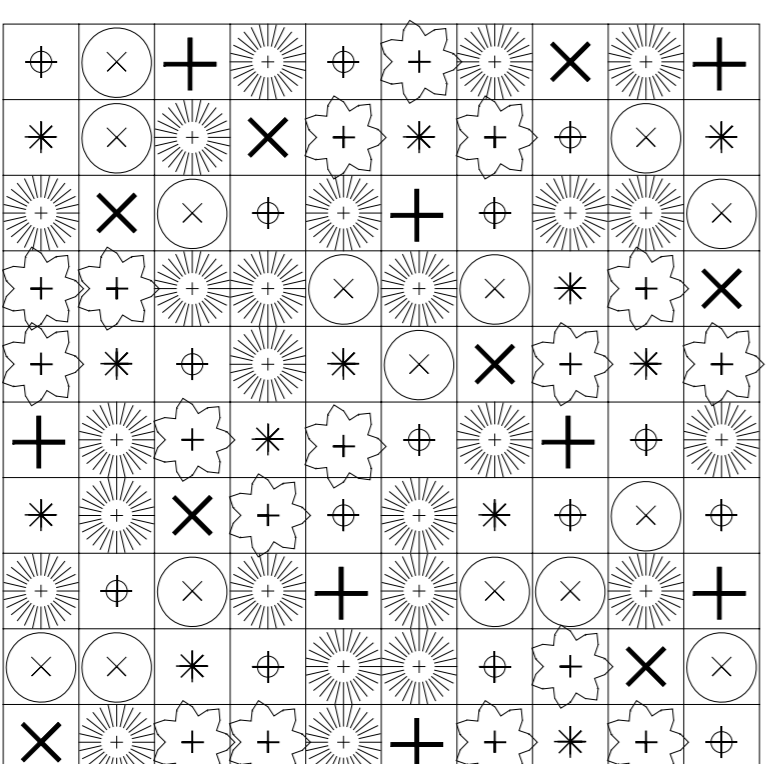
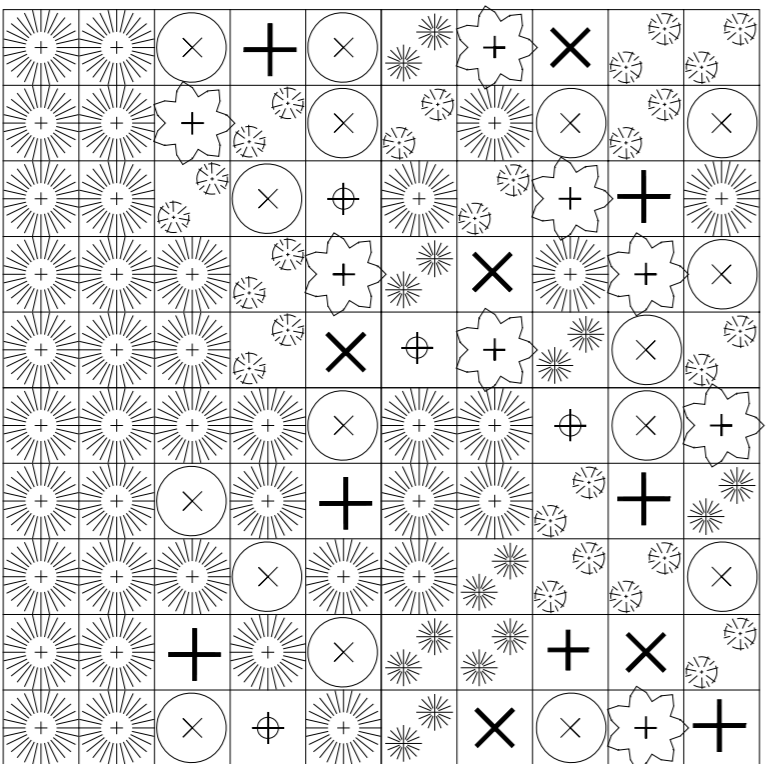
MODULE 4a (M4a)

MODULE 1b (M1b)

MODULE 2b (M2b)

MODULE 3b (M3b)

MODULE 4b (M4b)



ISSUE SCHEDULE

Issue	Description	Date
A	Preliminary Issue	15/11/16
B	Approval Issue	23/11/16
C	Mulch Type Amended	28/02/17

NOTES

Landscape works drawings, associated specifications and details shall be read in conjunction with all other project consultants approved drawings including architectural, engineering, hydraulic, and electrical services.

DIAL BEFORE YOU DIG. Check all underground services prior to commencement of any works.

Ensure all dimensions are checked on site prior to commencement of landscape works. All dimensions shown on drawings, and details are in millimeters unless noted otherwise.

PROJECT

HONEYSUCKLE BANKS PARKLAND
 Leighlands Road, Evandale, Tasmania

DRAWING INFORMATION

Scale Bar	North
Date	Project Stage
28/02/17	APPROVAL
DRAWING No.	Sheet
NMCHB1016 - LP08	8/8
	Issue
	C

CLIENT

NORTHERN MIDLANDS COUNCIL

LANG design

M : 0412 336 381

PO Box 5017
 Launceston TAS 5017

www.langdesign.com.au
 leon@langdesign.com.au

LANDSCAPE ARCHITECTURE