

M : 0412 336 381
 ABN: 97 468 721 622
 PO Box 5017
 Launceston TAS 5017
 www.langedesign.com.au
 leon@langedesign.com.au



ISSUE SCHEDULE		
Issue	Description	Date
A	Preliminary Issue	15/11/16
B	Approval Issue	23/11/16
C	Plan Updated	28/02/17

NOTES

Landscape works drawings, associated specifications and details shall be read in conjunction with all other project consultants approved drawings including: architectural, engineering, hydraulic, and electrical services.

DIAL BEFORE YOU DIG. Check all underground services prior to commencement of any works.

Ensure all dimensions are checked on site prior to commencement of landscape works. All dimensions shown on drawings and details are in millimetres unless noted otherwise.

PROJECT

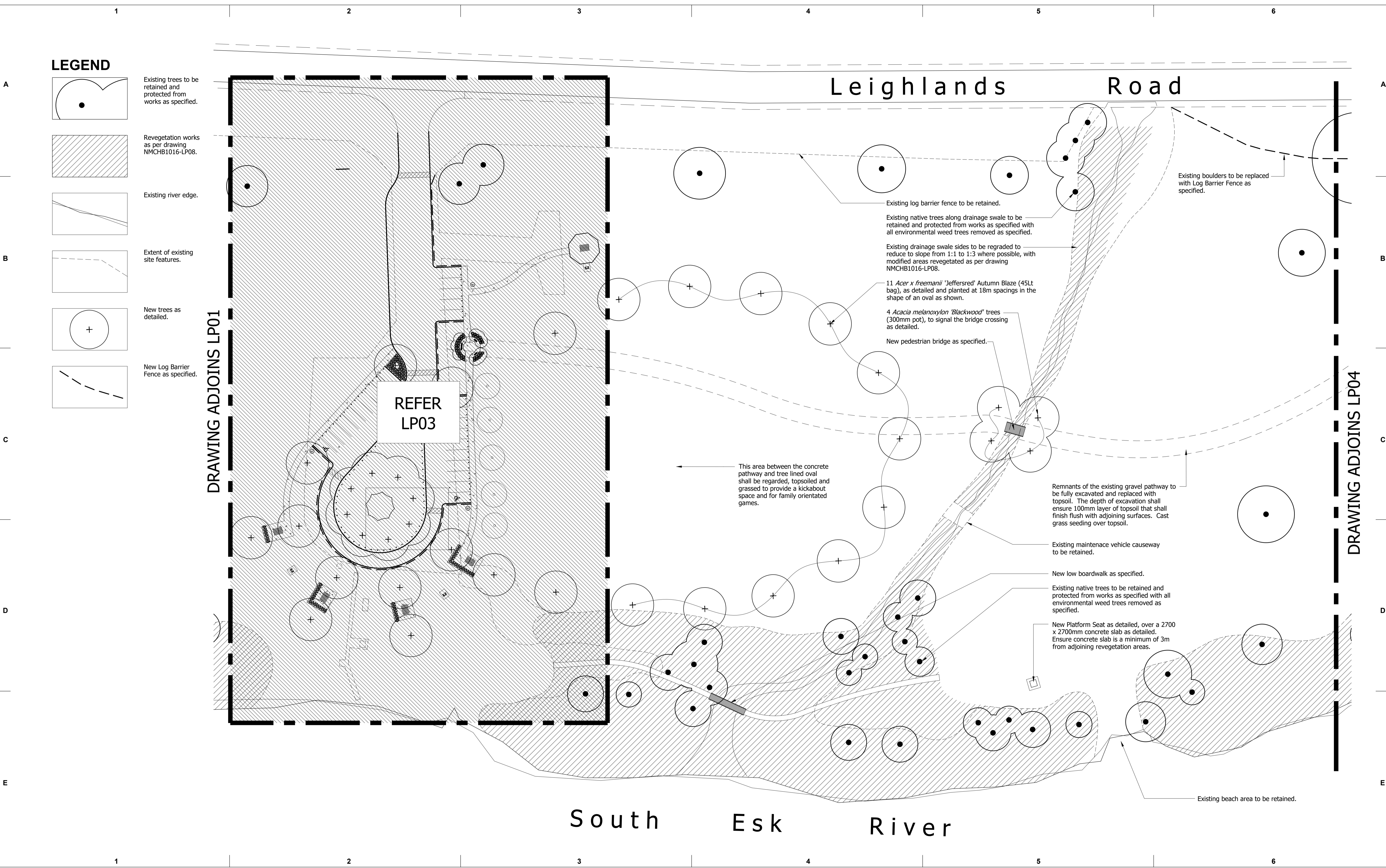
HONEYSUCKLE BANKS PARKLAND
 Leighlands Road, Evandale, Tasmania

DRAWING TITLE

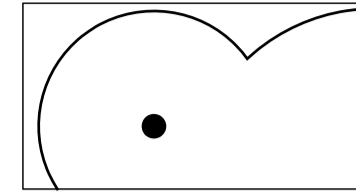
LANDSCAPE PLAN

DRAWING INFORMATION		
Scale Bar 0 1 2 5 10 20m	North	
Date 28/02/17	Project Stage APPROVAL	Sheet 1/8
DRAWING No. NMCHB1016 - LP01	Issue C	

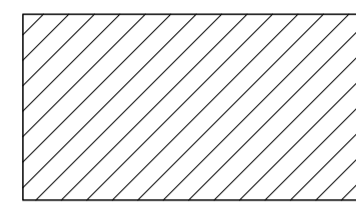
DRAWING ADJOINS LP02



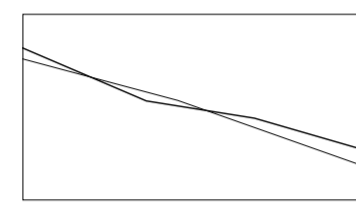
LEGEND



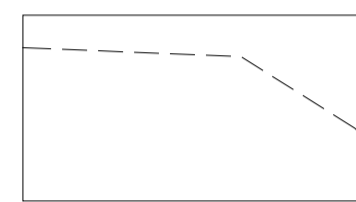
Existing trees to be retained and protected from works as specified.



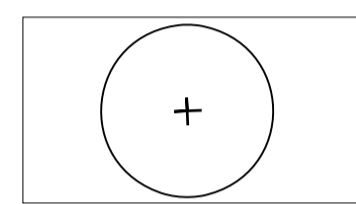
Revegetation works as per drawing NMCHB1016-LP08.



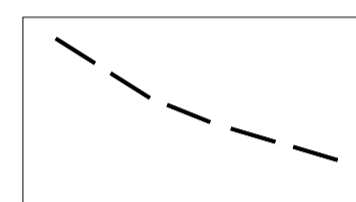
Existing river edge.



Extent of existing site features.



New trees as detailed.



New Log Barrier Fence as specified.

A

B

C

D

E

A

B

C

D

E

DRAWING ADJOINS LP01

DRAWING ADJOINS LP04

REFER LP03

Leighlands Road

South Esk River

Existing log barrier fence to be retained.

Existing native trees along drainage swale to be retained and protected from works as specified with all environmental weed trees removed as specified.

Existing drainage swale sides to be graded to reduce to slope from 1:1 to 1:3 where possible, with modified areas revegetated as per drawing NMCHB1016-LP08.

11 *Acer x freemanii* 'Jeffersred' Autumn Blaze (45L bag), as detailed and planted at 18m spacings in the shape of an oval as shown.

4 *Acacia melanoxylon* 'Blackwood' trees (300mm pot), to signal the bridge crossing as detailed.

New pedestrian bridge as specified.

Existing boulders to be replaced with Log Barrier Fence as specified.

This area between the concrete pathway and tree lined oval shall be regarded, topsoiled and grassed to provide a kickabout space and for family orientated games.

Remnants of the existing gravel pathway to be fully excavated and replaced with topsoil. The depth of excavation shall ensure 100mm layer of topsoil that shall finish flush with adjoining surfaces. Cast grass seeding over topsoil.

Existing maintenance vehicle causeway to be retained.

New low boardwalk as specified.

Existing native trees to be retained and protected from works as specified with all environmental weed trees removed as specified.

New Platform Seat as detailed, over a 2700 x 2700mm concrete slab as detailed. Ensure concrete slab is a minimum of 3m from adjoining revegetation areas.

Existing beach area to be retained.

LANGE
design
landscape architecture

M : 0412 336 381
ABN: 97 468 721 622
PO Box 5017
Launceston TAS 5017
www.langedesign.com.au
leon@langedesign.com.au

CLIENT

NORTHERN
MIDLANDS
COUNCIL

ISSUE SCHEDULE		
Issue	Description	Date
A	Preliminary Issue	15/11/16
B	Approval Issue	23/11/16
C	Pathways removed	28/02/17

NOTES
Landscape works drawings, associated specifications and details shall be read in conjunction with all other project consultants approved drawings including: architectural, engineering, hydraulic, and electrical services.

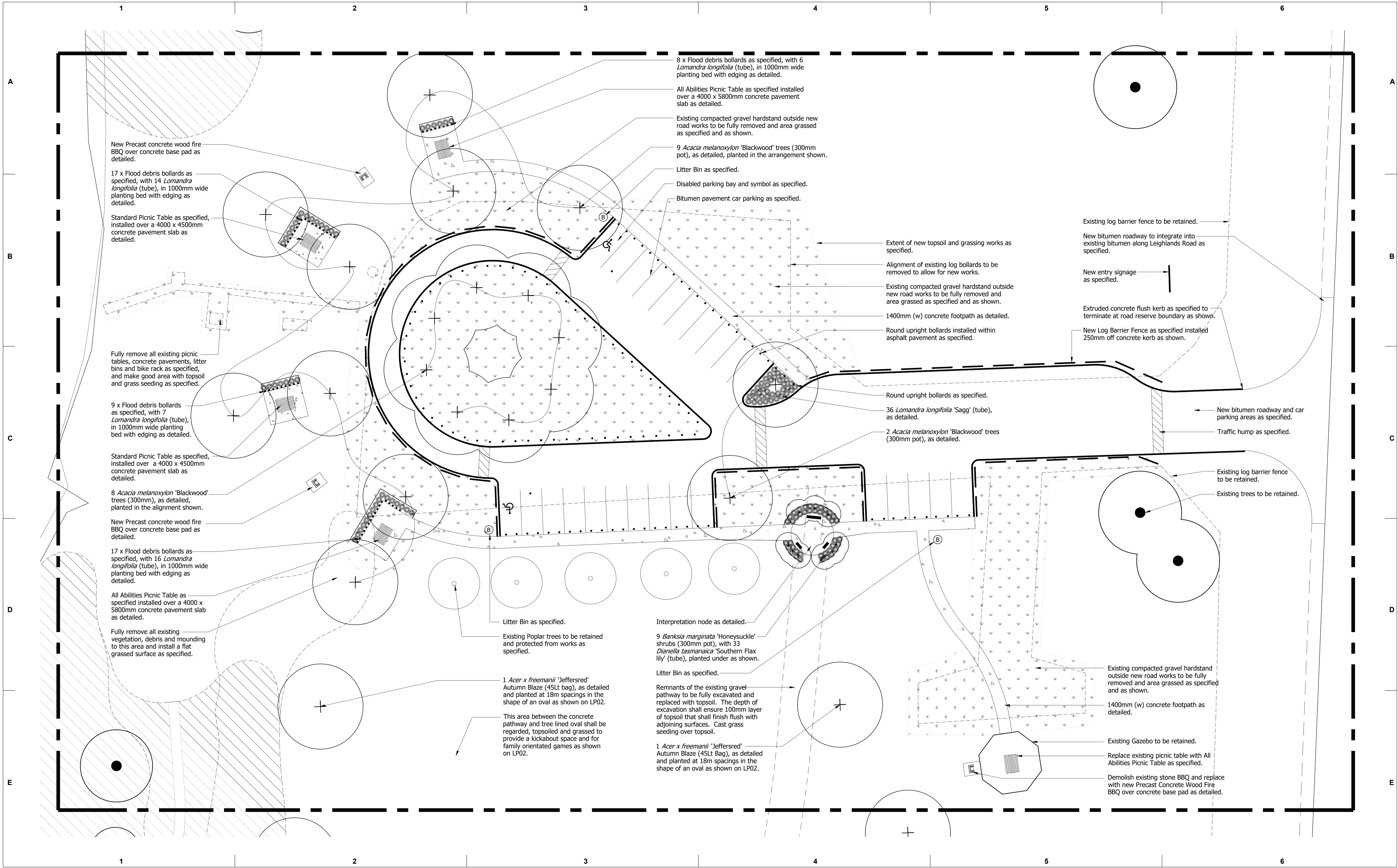
DIAL BEFORE YOU DIG. Check all underground services prior to commencement of any works.

Ensure all dimensions are checked on site prior to commencement of landscape works. All dimensions shown on drawings and details are in millimetres unless noted otherwise.

PROJECT
HONEYSUCKLE BANKS PARKLAND
Leighlands Road, Evandale, Tasmania

DRAWING TITLE
LANDSCAPE PLAN

DRAWING INFORMATION
Scale Bar: 0 1 2 5 10 20m
Date: 28/02/17
Project Stage: APPROVAL
Sheet: 2/8
Issue: C
DRAWING No.: NMCHB1016 - LP02



LANGE
design
landscape architecture

M : 0412 336 381
ABN: 97 468 721 622
PO Box 5017
Launceston TAS 5017
www.langedesign.com.au
leon@langedesign.com.au



ISSUE SCHEDULE		
Issue	Description	Date
A	Preliminary Issue	15/11/16
B	Approval Issue	23/11/16
C	Pathways removed	28/02/17

NOTES

Landscape works drawings, associated specifications and details shall be read in conjunction with all other project consultants approved drawings including: architectural, engineering, hydraulic, and electrical services.

DIAL BEFORE YOU DIG. Check all underground services prior to commencement of any works.

Ensure all dimensions are checked on site prior to commencement of landscape works. All dimensions shown on drawings and details are in millimetres unless noted otherwise.

PROJECT

HONEYSUCKLE BANKS PARKLAND
Leighlands Road, Evandale, Tasmania

DRAWING TITLE

LANDSCAPE PLAN

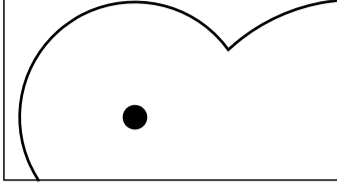
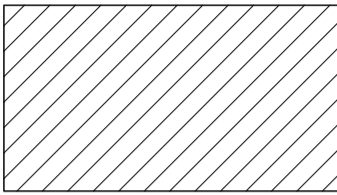
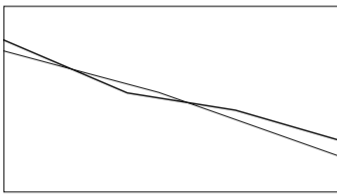
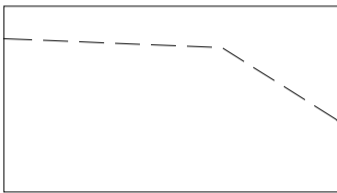
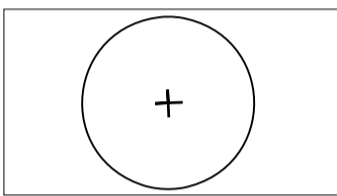
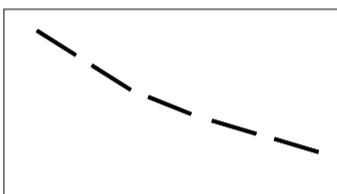
DRAWING INFORMATION

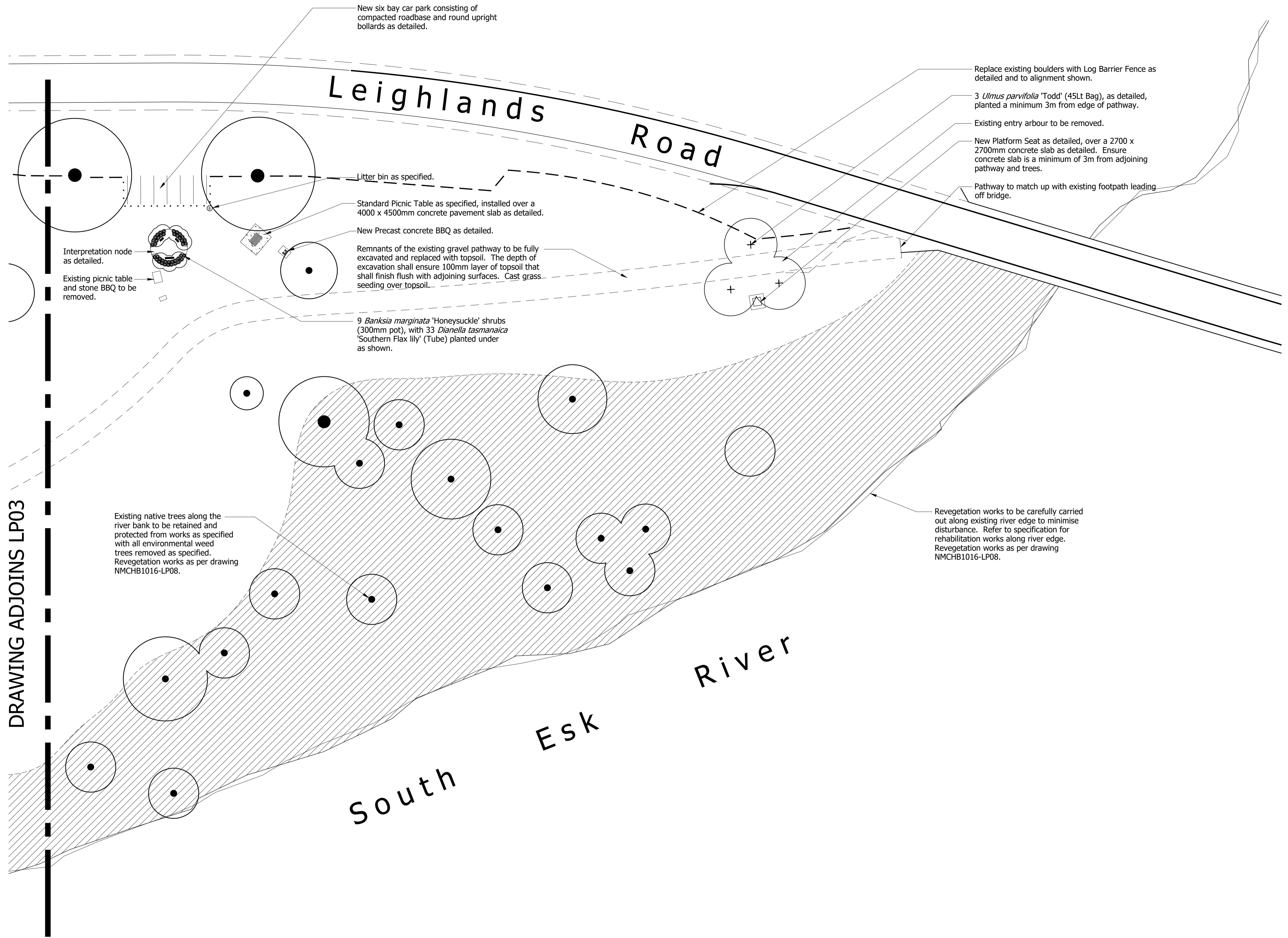
Scale Bar: 0 1 2 5 10 20m North

Date: 28/02/17 Project Stage: APPROVAL Sheet: 3/8

DRAWING No. NMCHB1016 - LP03 Issue: C

LEGEND

-  Existing trees to be retained and protected from works as specified.
-  Revegetation works as per drawing NMCHB1016-LP08.
-  Existing river edge.
-  Extent of existing site features.
-  New trees as detailed.
-  New Log Barrier Fence as specified.



DRAWING ADJOINS LP03

LANGE
design
landscape architecture

M : 0412 336 381
ABN: 97 468 721 622
PO Box 5017
Launceston TAS 5017
www.langedesign.com.au
leon@langedesign.com.au

CLIENT



NORTHERN
MIDLANDS
COUNCIL

ISSUE SCHEDULE		
Issue	Description	Date
A	Preliminary Issue	15/11/16
B	Approval Issue	23/11/16
C	Pathways removed	28/02/17

NOTES

Landscape works drawings, associated specifications and details shall be read in conjunction with all other project consultants approved drawings including: architectural, engineering, hydraulic, and electrical services.

DIAL BEFORE YOU DIG. Check all underground services prior to commencement of any works.

Ensure all dimensions are checked on site prior to commencement of landscape works. All dimensions shown on drawings and details are in millimetres unless noted otherwise.

PROJECT

HONEYSUCKLE BANKS PARKLAND
Leighlands Road, Evandale, Tasmania

DRAWING TITLE

LANDSCAPE PLAN

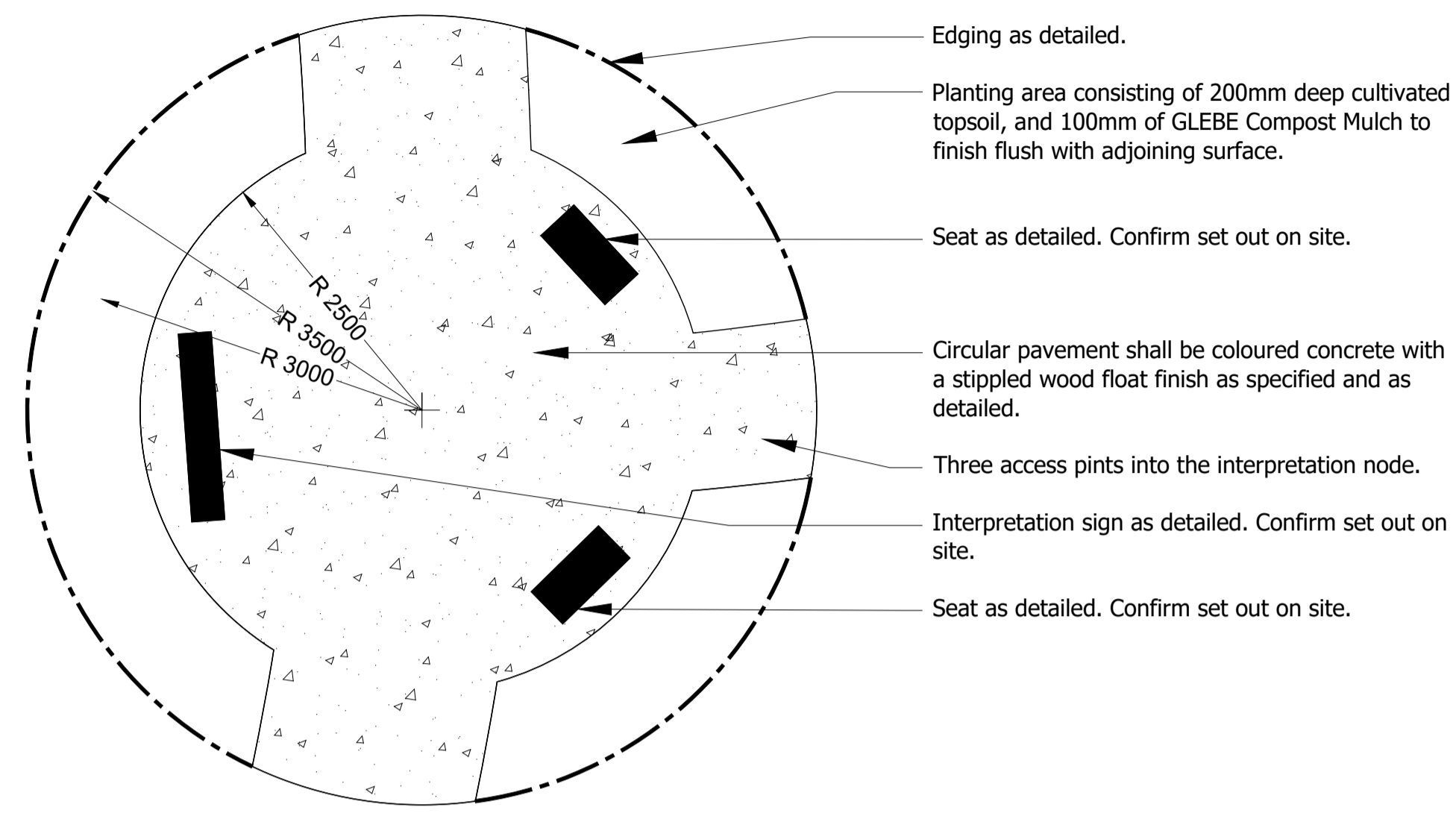
DRAWING INFORMATION

Scale Bar: 0 1 2 5 10 20m North

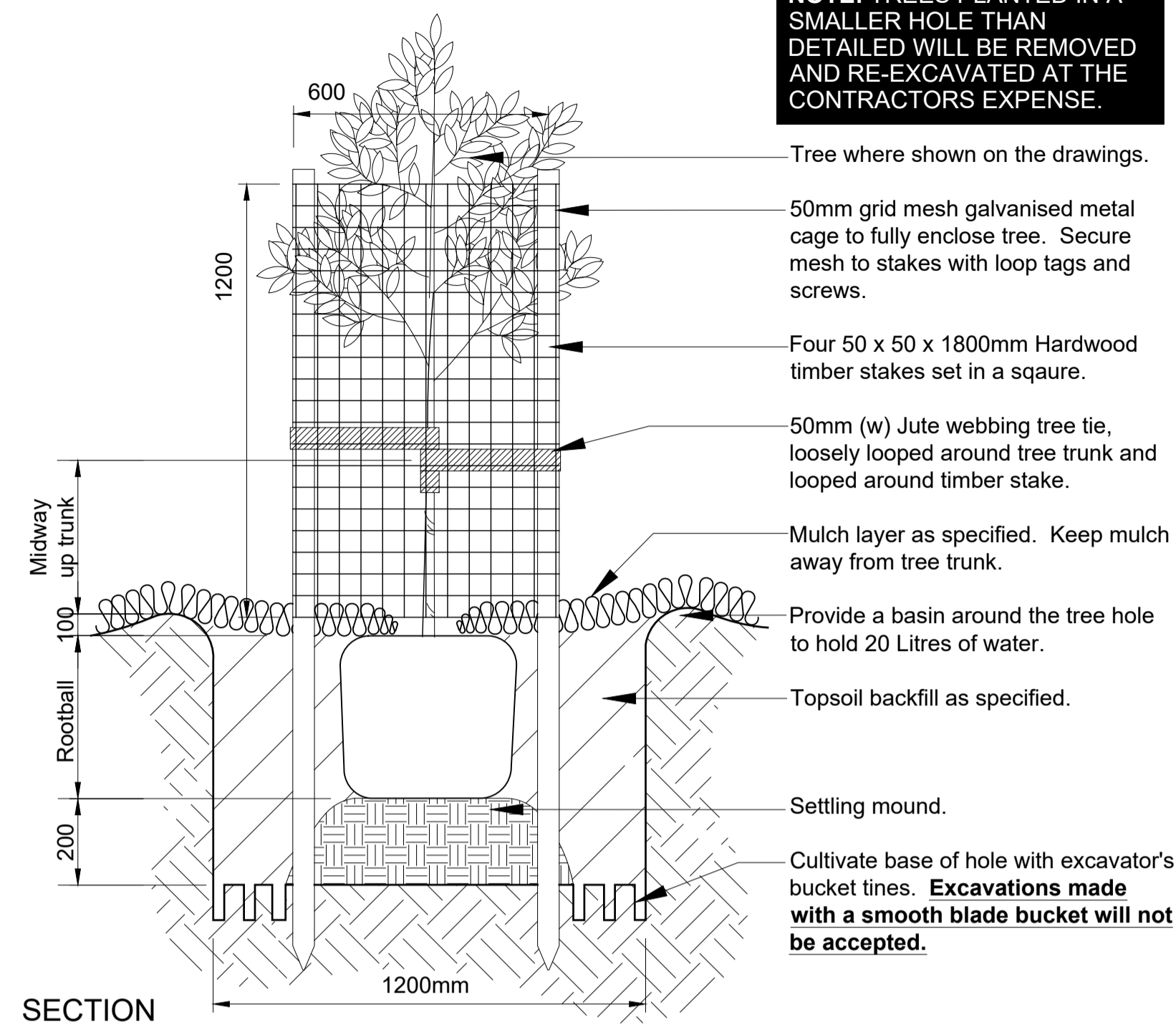
Date: 28/02/17 Project Stage: APPROVAL Sheet: 4/8

DRAWING No. Issue

NMCHB1016 - LP04 C

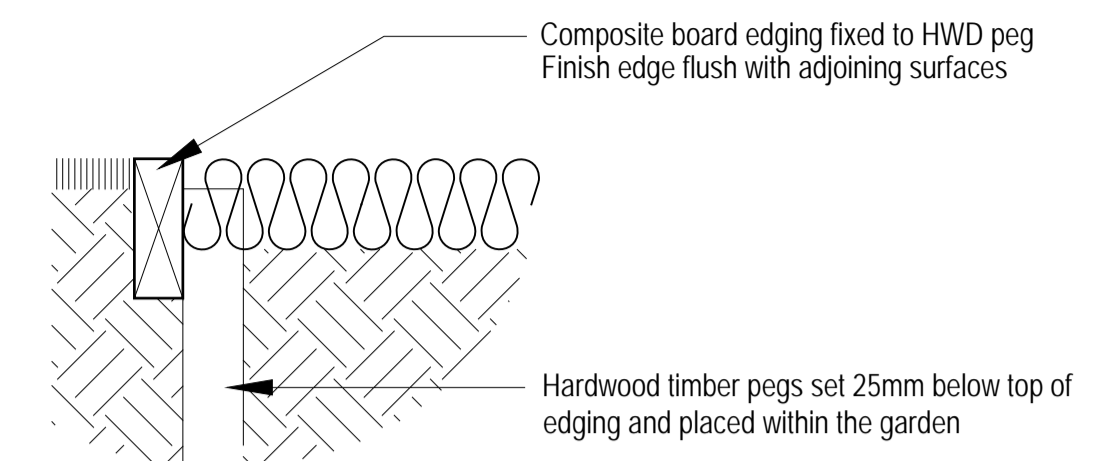


PLAN
INTERPRETATION NODE

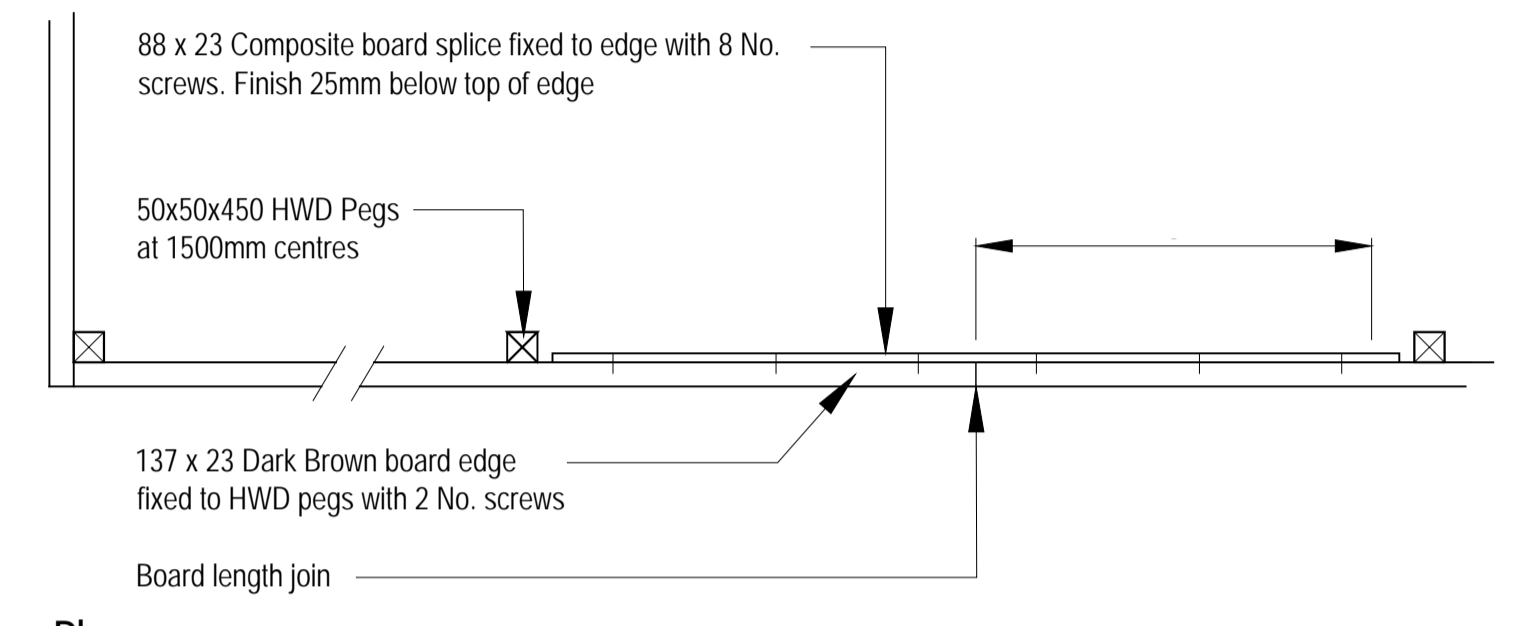


SECTION
300mm - 45Lt TREE PLANTING

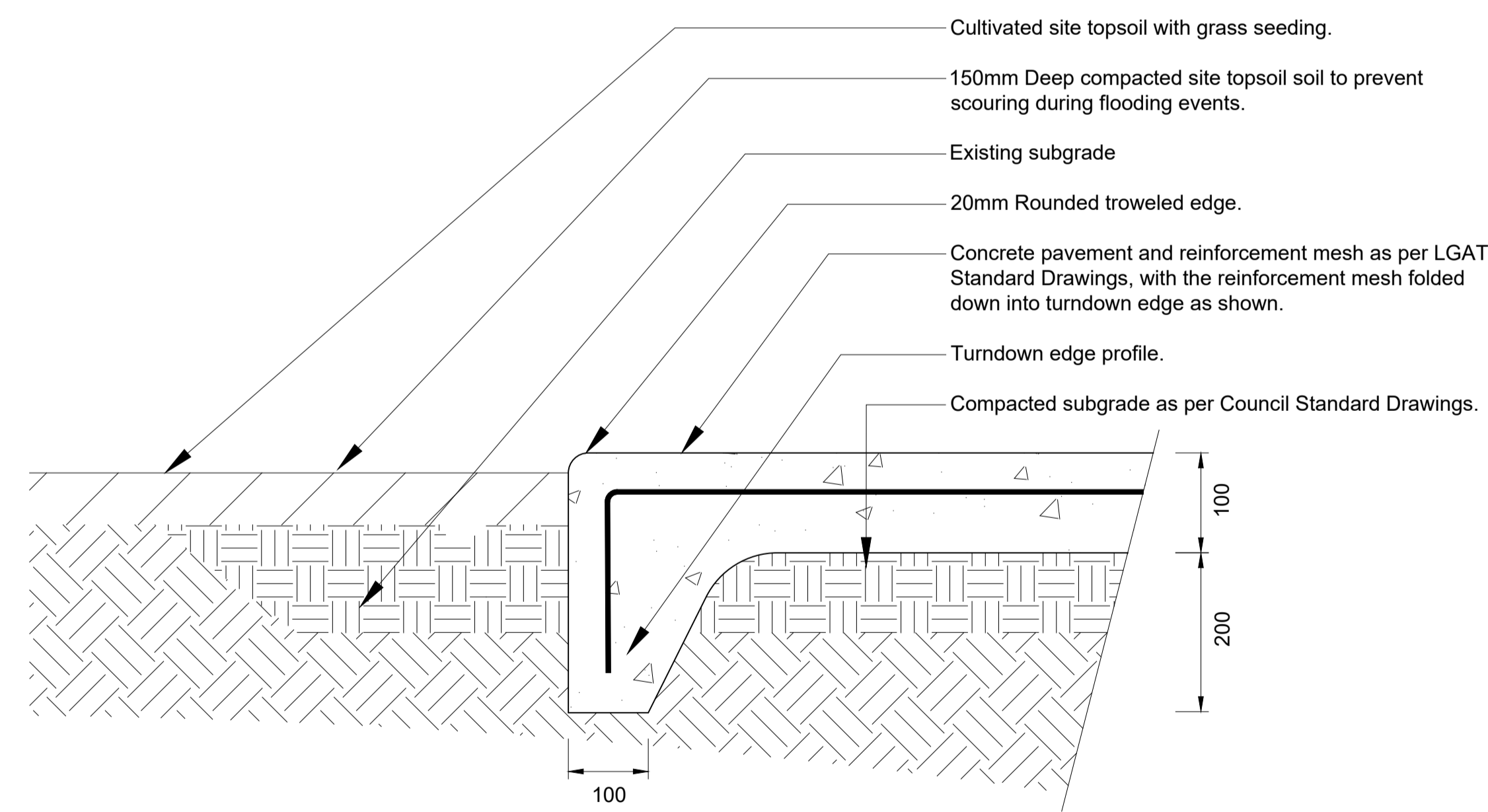
NOTE: TREES PLANTED IN A SMALLER HOLE THAN DETAILED WILL BE REMOVED AND RE-EXCAVATED AT THE CONTRACTORS EXPENSE.



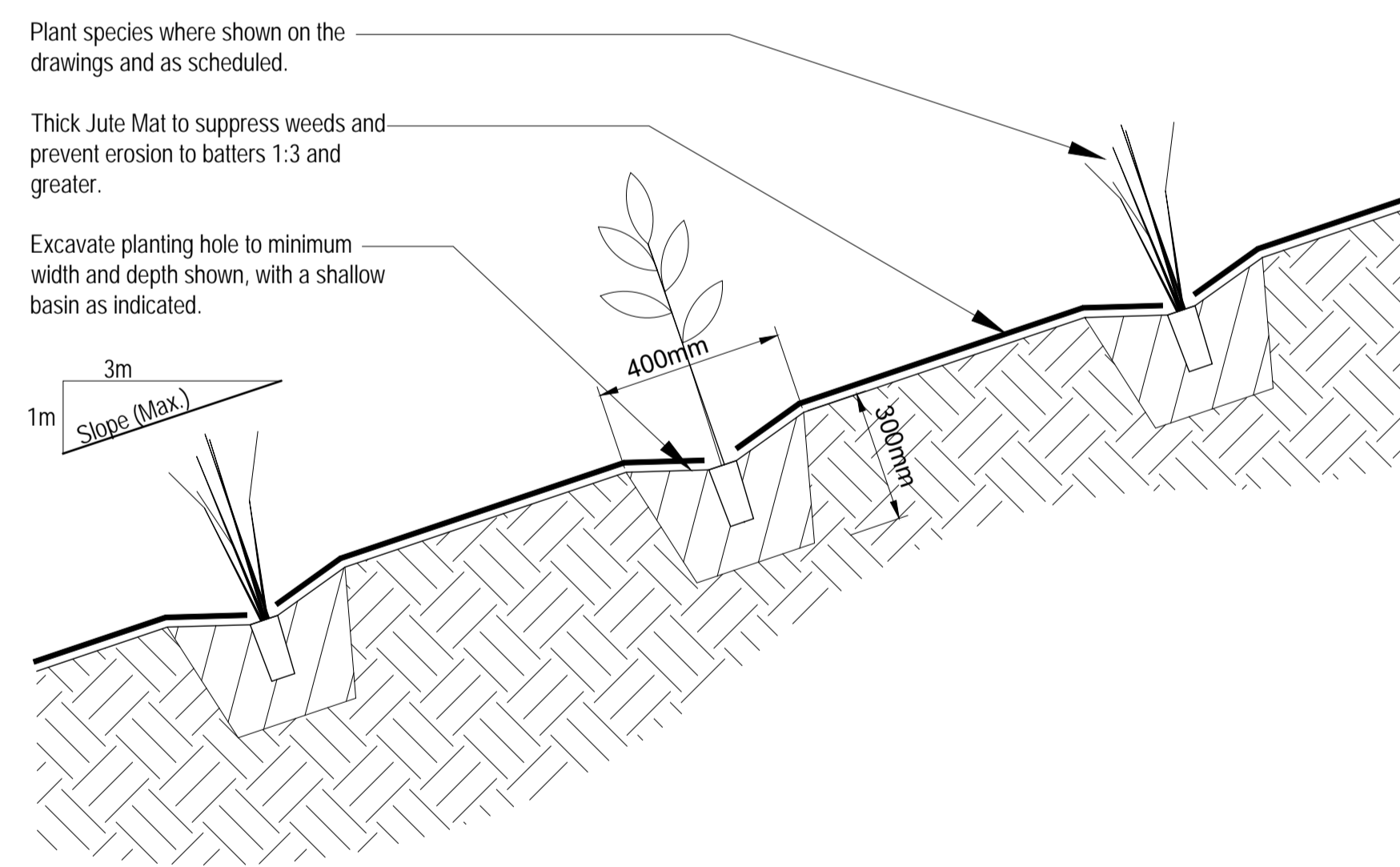
Section
(Larger Scale)



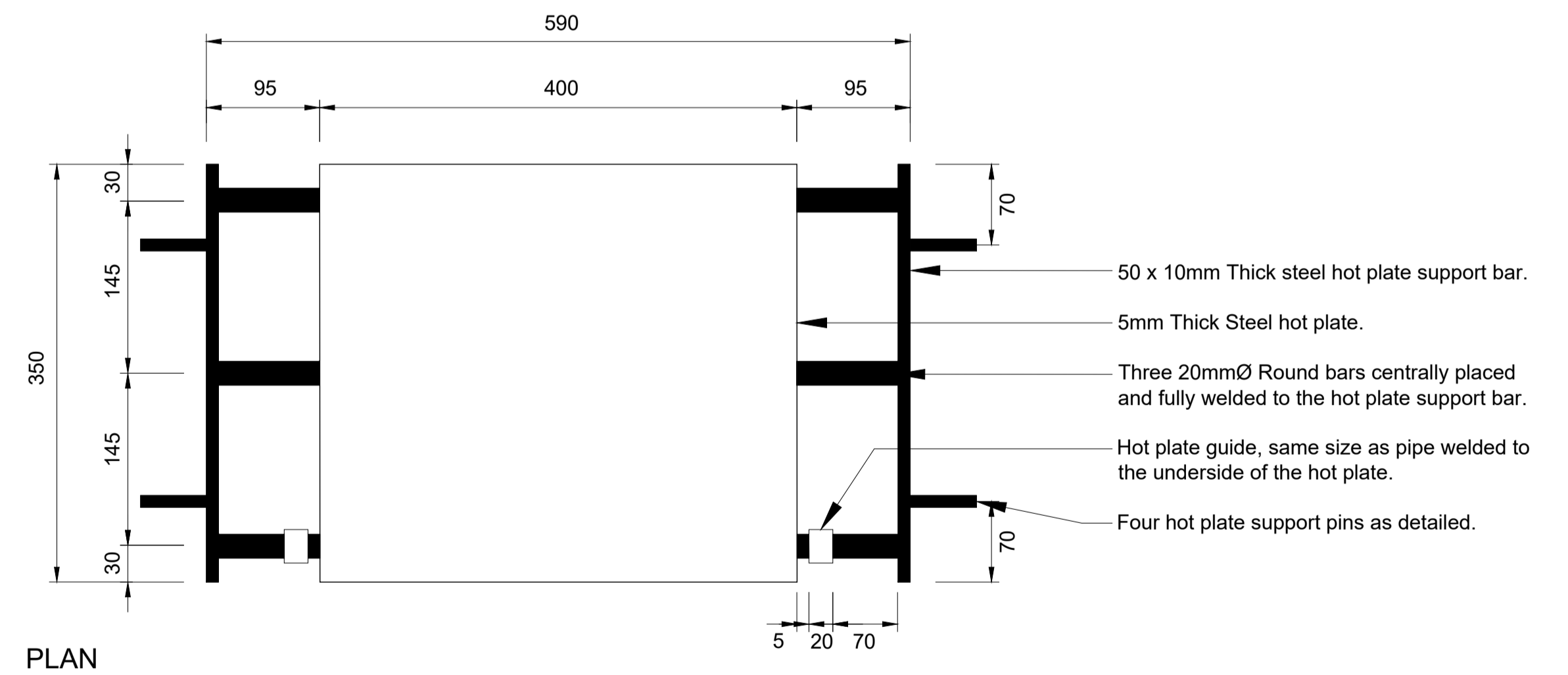
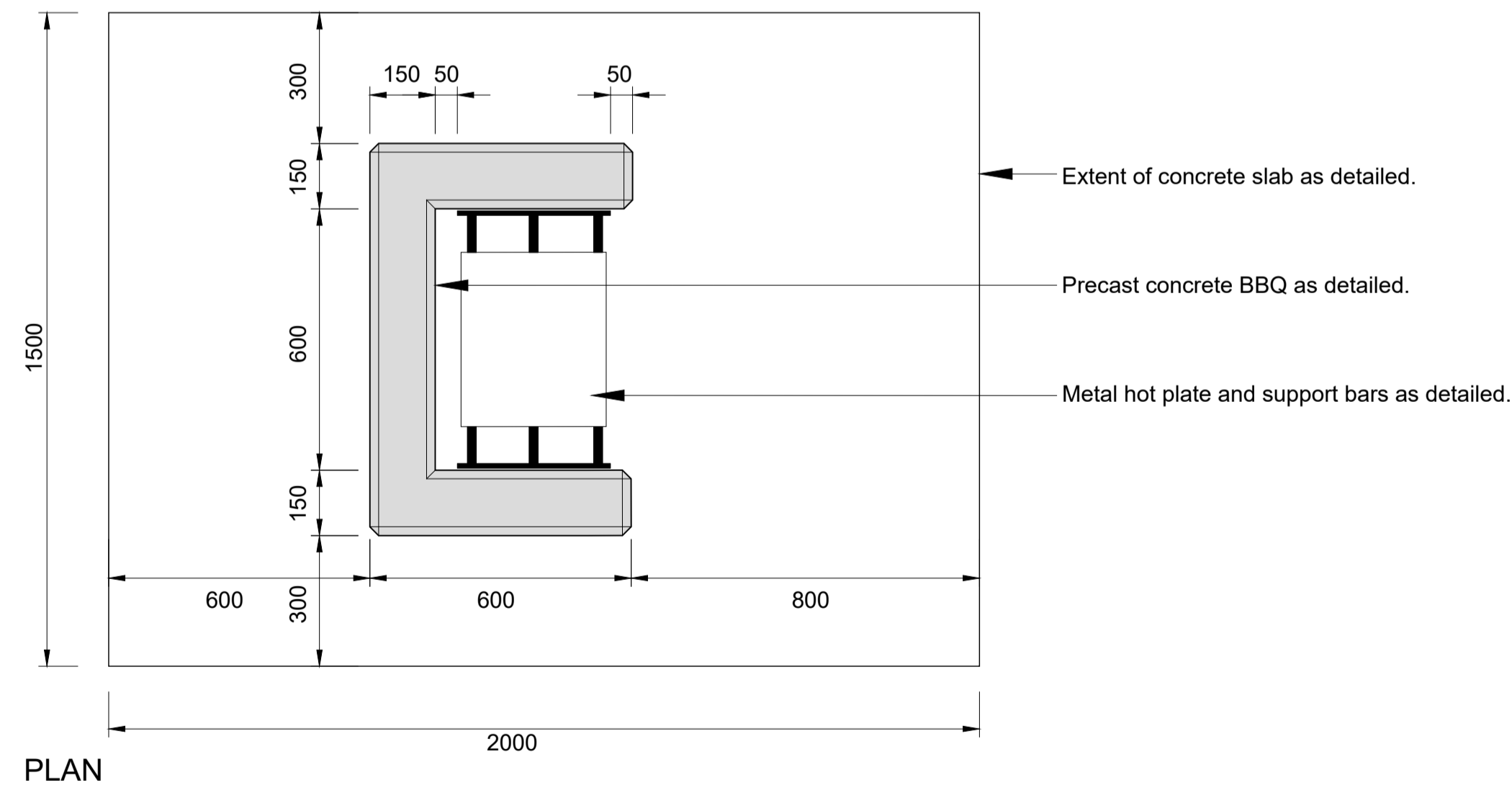
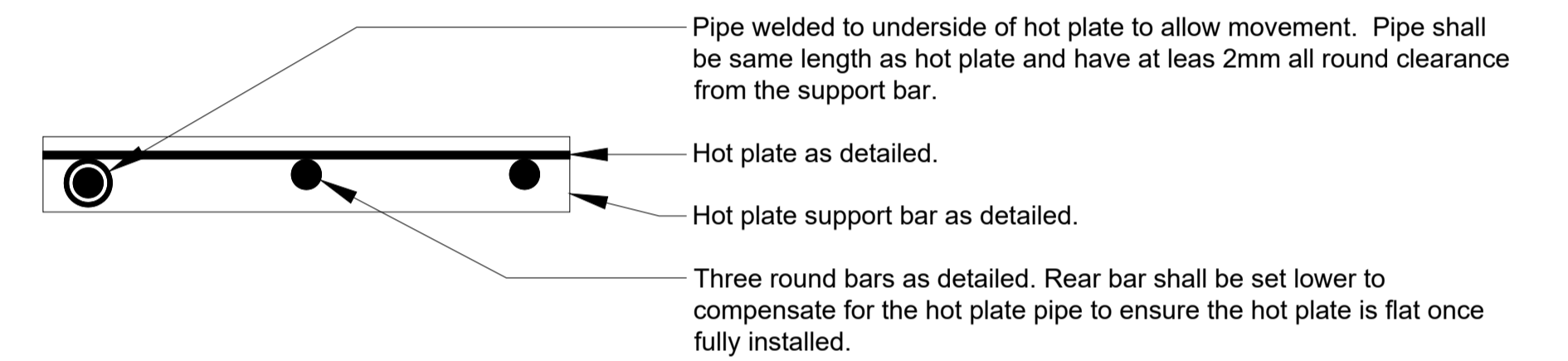
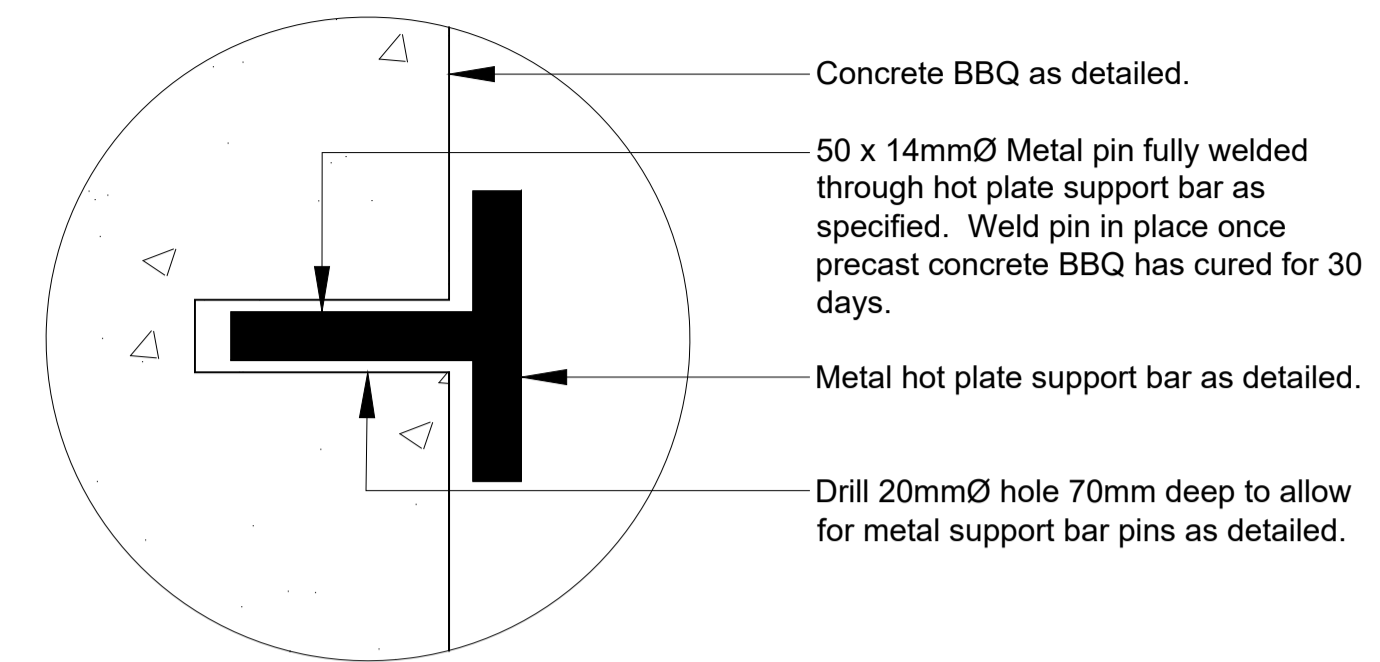
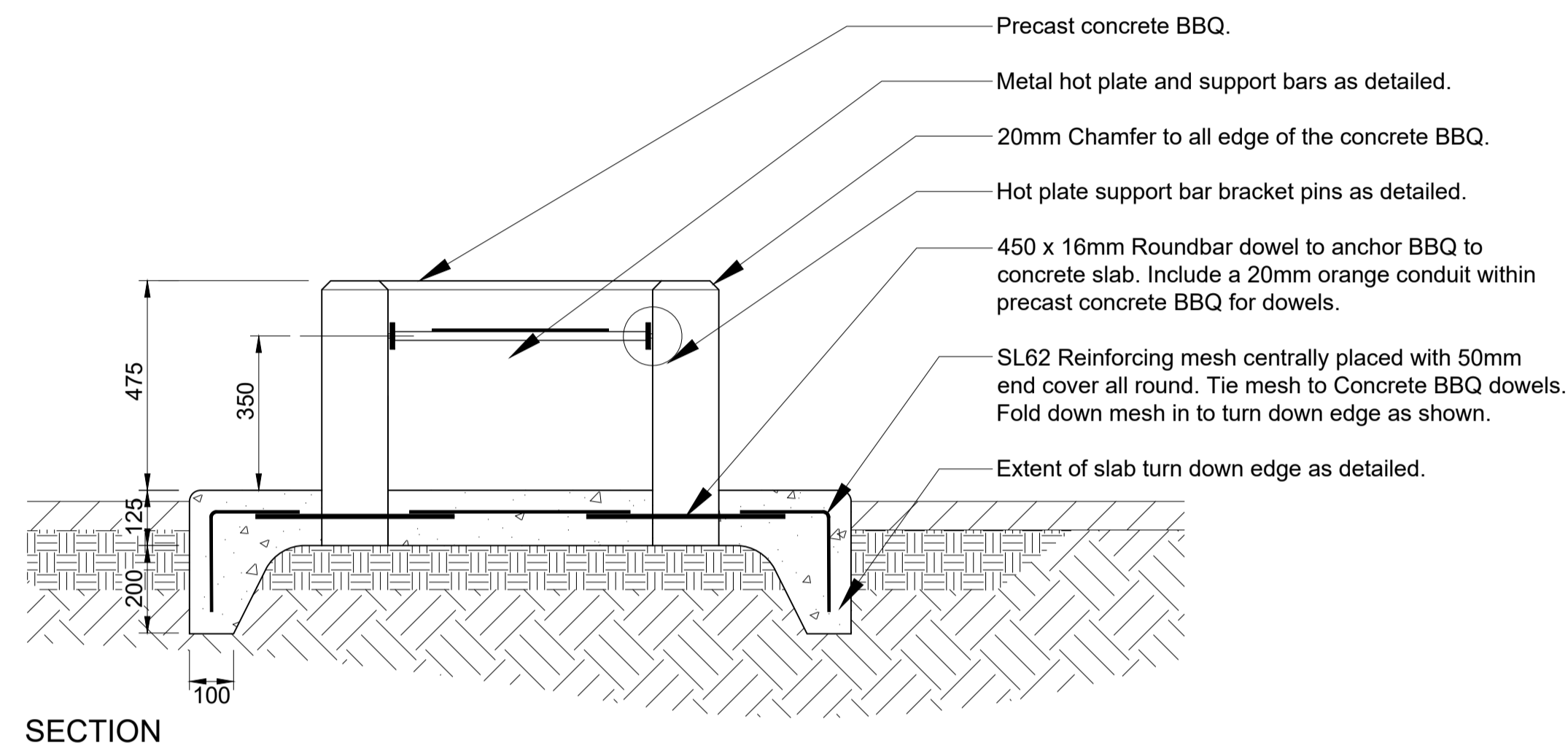
Plan
EDGING - Composite Board (Ekodeck or equal)



SECTION
TYPICAL CONCRETE PAVEMENT - Turndown Edge for Flood Proofing



SECTION
REVEGETATION PLANTING - Typical



PRECAST CONCRETE WOOD FIRE BBQ

METAL HOT PLATE AND SUPPORT BARS

ISSUE SCHEDULE		
Issue	Description	Date
A	Preliminary Issue	15/11/16
B	Approval Issue	23/11/16

NOTES

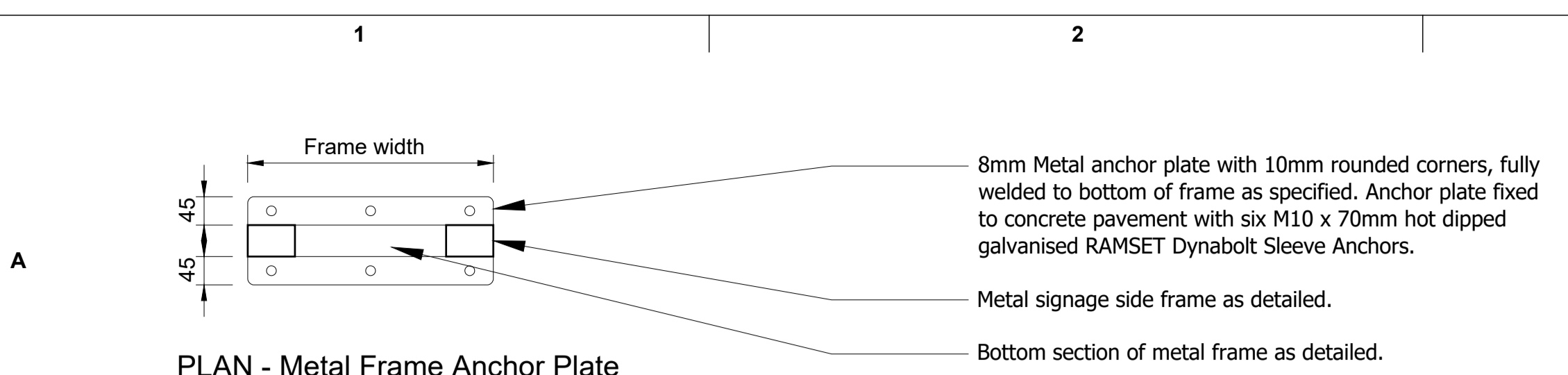
Landscape works drawings, associated specifications and details shall be read in conjunction with all other project consultants approved drawings including: architectural, engineering, hydraulic, and electrical services.

DIAL BEFORE YOU DIG. Check all underground services prior to commencement of any works.

Ensure all dimensions are checked on site prior to commencement of landscape works. All dimensions shown on drawings and details are in millimetres unless noted otherwise.

PROJECT	
HONEYSUCKLE BANKS PARKLAND Leighlands Road, Evandale, Tasmania	
DRAWING TITLE	
LANDSCAPE DETAILS	

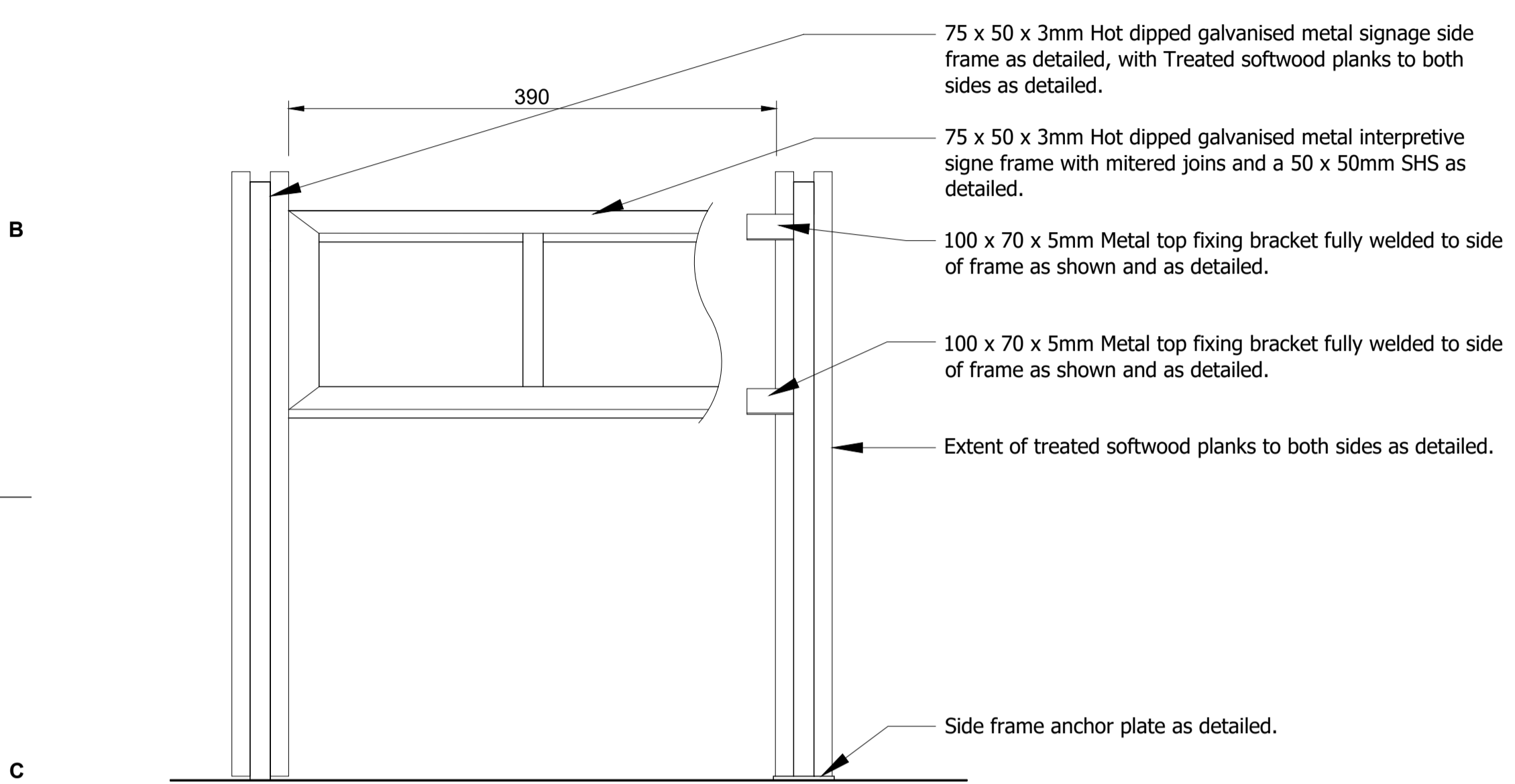
DRAWING INFORMATION		
Scale Bar	North	
Date 23/11/16	Project Stage APPROVAL	Sheet 6/8
DRAWING No. NMCHB1016 - LP06	Issue B	



8mm Metal anchor plate with 10mm rounded corners, fully welded to bottom of frame as specified. Anchor plate fixed to concrete pavement with six M10 x 70mm hot dipped galvanised RAMSET Dynabolt Sleeve Anchors.

Metal signage side frame as detailed.

Bottom section of metal frame as detailed.



75 x 50 x 3mm Hot dipped galvanised metal signage side frame as detailed, with Treated softwood planks to both sides as detailed.

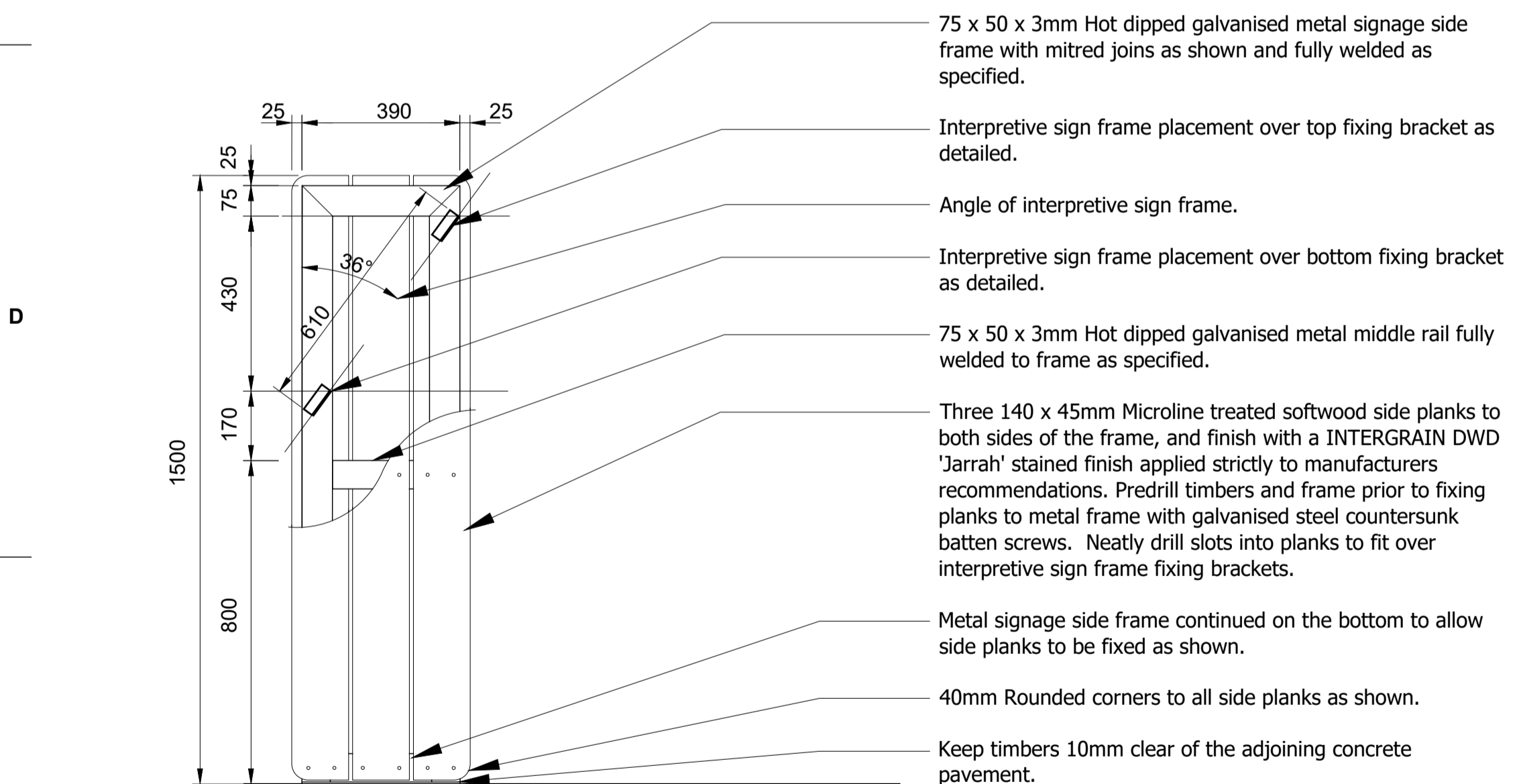
75 x 50 x 3mm Hot dipped galvanised metal interpretive signe frame with mitred joins and a 50 x 50mm SHS as detailed.

100 x 70 x 5mm Metal top fixing bracket fully welded to side of frame as shown and as detailed.

100 x 70 x 5mm Metal top fixing bracket fully welded to side of frame as shown and as detailed.

Extent of treated softwood planks to both sides as detailed.

Side frame anchor plate as detailed.



75 x 50 x 3mm Hot dipped galvanised metal signage side frame with mitred joins as shown and fully welded as specified.

Interpretive sign frame placement over top fixing bracket as detailed.

Angle of interpretive sign frame.

Interpretive sign frame placement over bottom fixing bracket as detailed.

75 x 50 x 3mm Hot dipped galvanised metal middle rail fully welded to frame as specified.

Three 140 x 45mm Microline treated softwood side planks to both sides of the frame, and finish with a INTERGRAIN DWD 'Jarrah' stained finish applied strictly to manufacturers recommendations. Predrill timbers and frame prior to fixing planks to metal frame with galvanised steel countersunk batten screws. Neatly drill slots into planks to fit over interpretive sign frame fixing brackets.

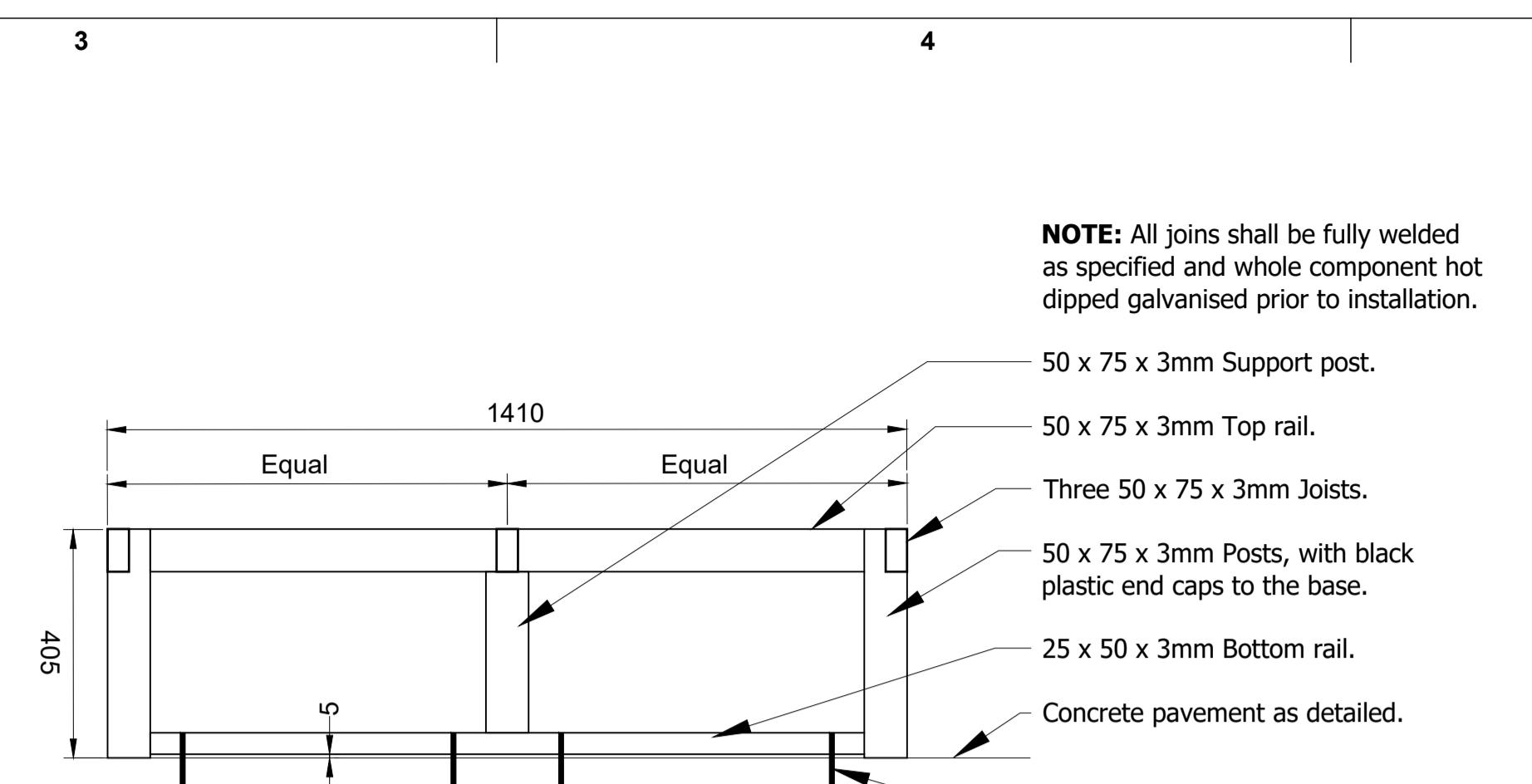
Metal signage side frame continued on the bottom to allow side planks to be fixed as shown.

40mm Rounded corners to all side planks as shown.

Keep timbers 10mm clear of the adjoining concrete pavement.

SECTION / ELEVATION - Side Panels

INTERPRETATION SIGNAGE



50 x 75 x 3mm Support post.

50 x 75 x 3mm Top rail.

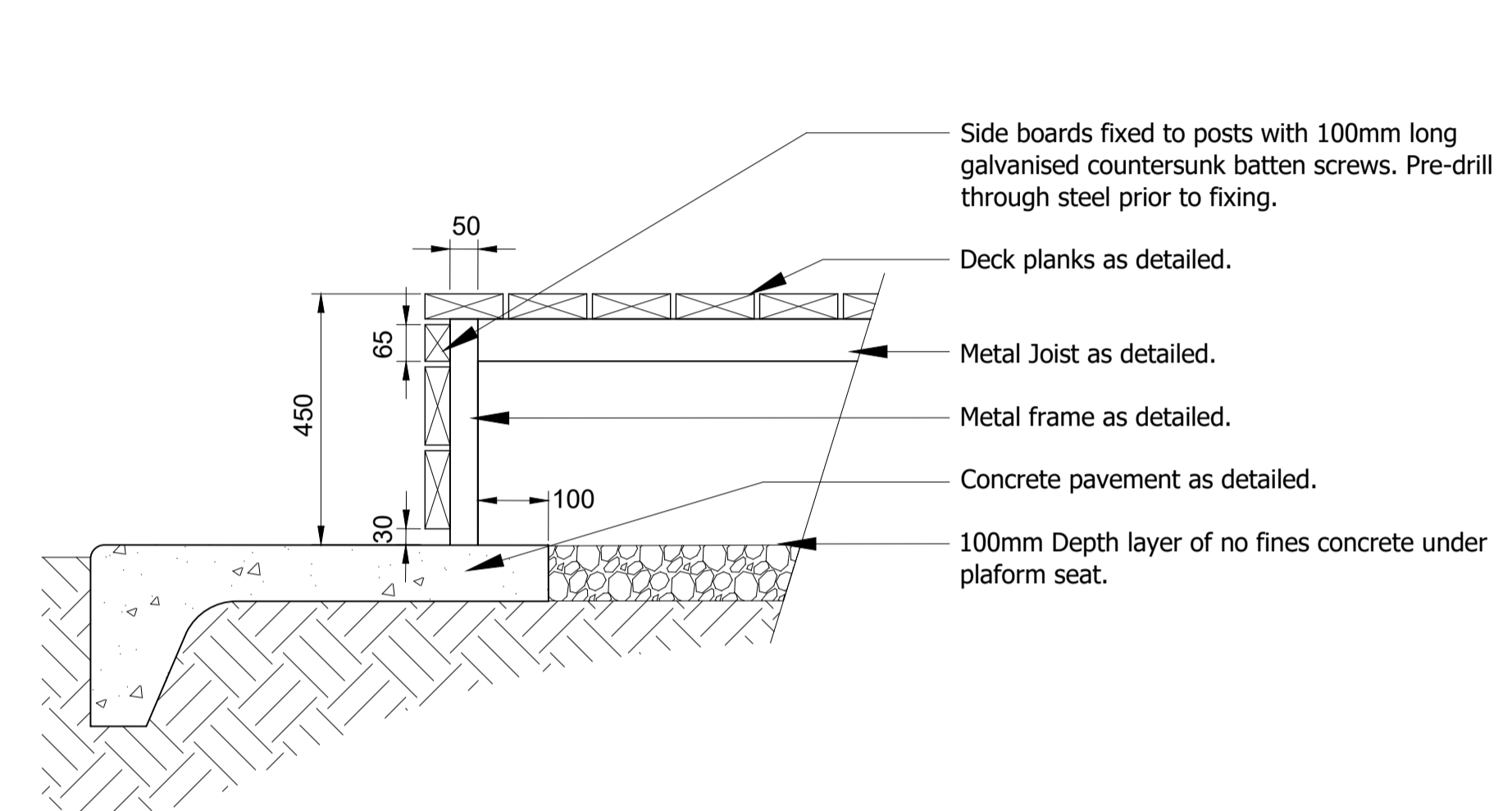
Three 50 x 75 x 3mm Joists.

50 x 75 x 3mm Posts, with black plastic end caps to the base.

25 x 50 x 3mm Bottom rail.

Concrete pavement as detailed.

Four M16 x 145mm stainless steel RAMSET SpaTec safety anchor.



Side boards fixed to posts with 100mm long galvanised countersunk batten screws. Pre-drill through steel prior to fixing.

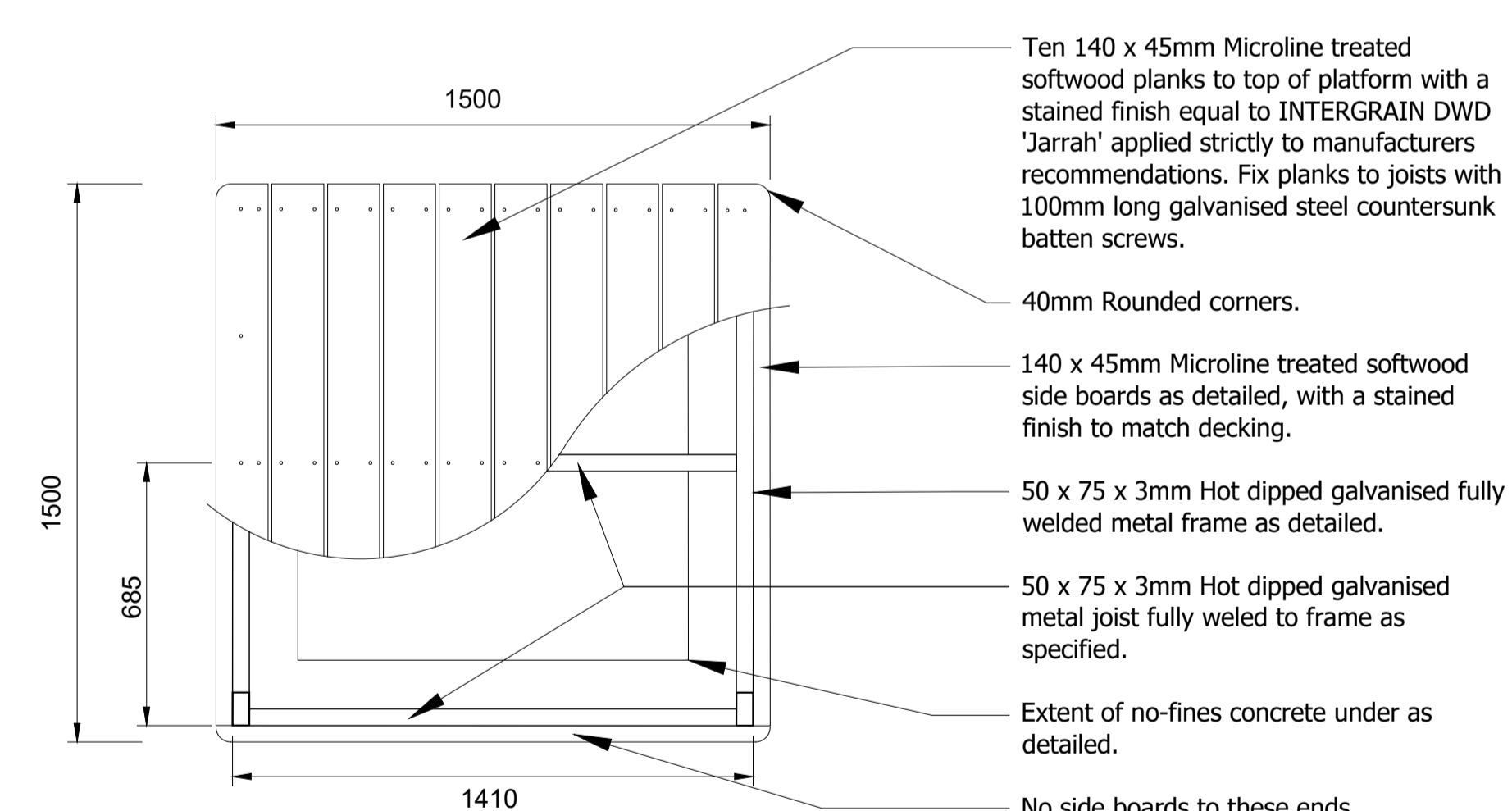
Deck planks as detailed.

Metal Joist as detailed.

Metal frame as detailed.

Concrete pavement as detailed.

100mm Depth layer of no fines concrete under platform seat.



Ten 140 x 45mm Microline treated softwood planks to top of platform with a stained finish equal to INTERGRAIN DWD 'Jarrah' applied strictly to manufacturers recommendations. Fix planks to joists with 100mm long galvanised steel countersunk batten screws.

40mm Rounded corners.

140 x 45mm Microline treated softwood side boards as detailed, with a stained finish to match decking.

50 x 75 x 3mm Hot dipped galvanised fully welded metal frame as detailed.

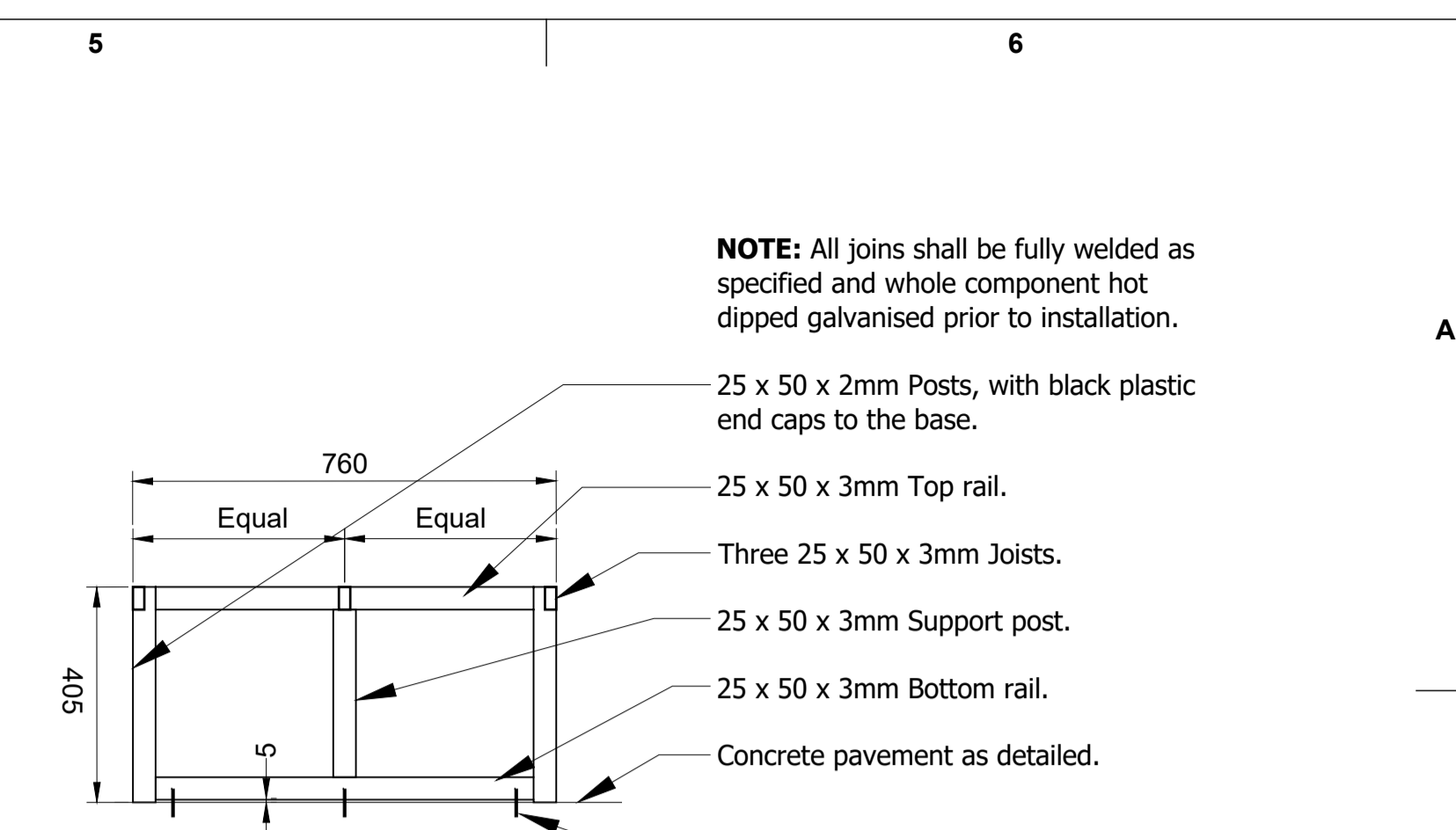
50 x 75 x 3mm Hot dipped galvanised metal joist fully weled to frame as specified.

Extent of no-fines concrete under as detailed.

No side boards to these ends.

PLAN

PLATFORM SEAT



25 x 50 x 2mm Posts, with black plastic end caps to the base.

25 x 50 x 3mm Top rail.

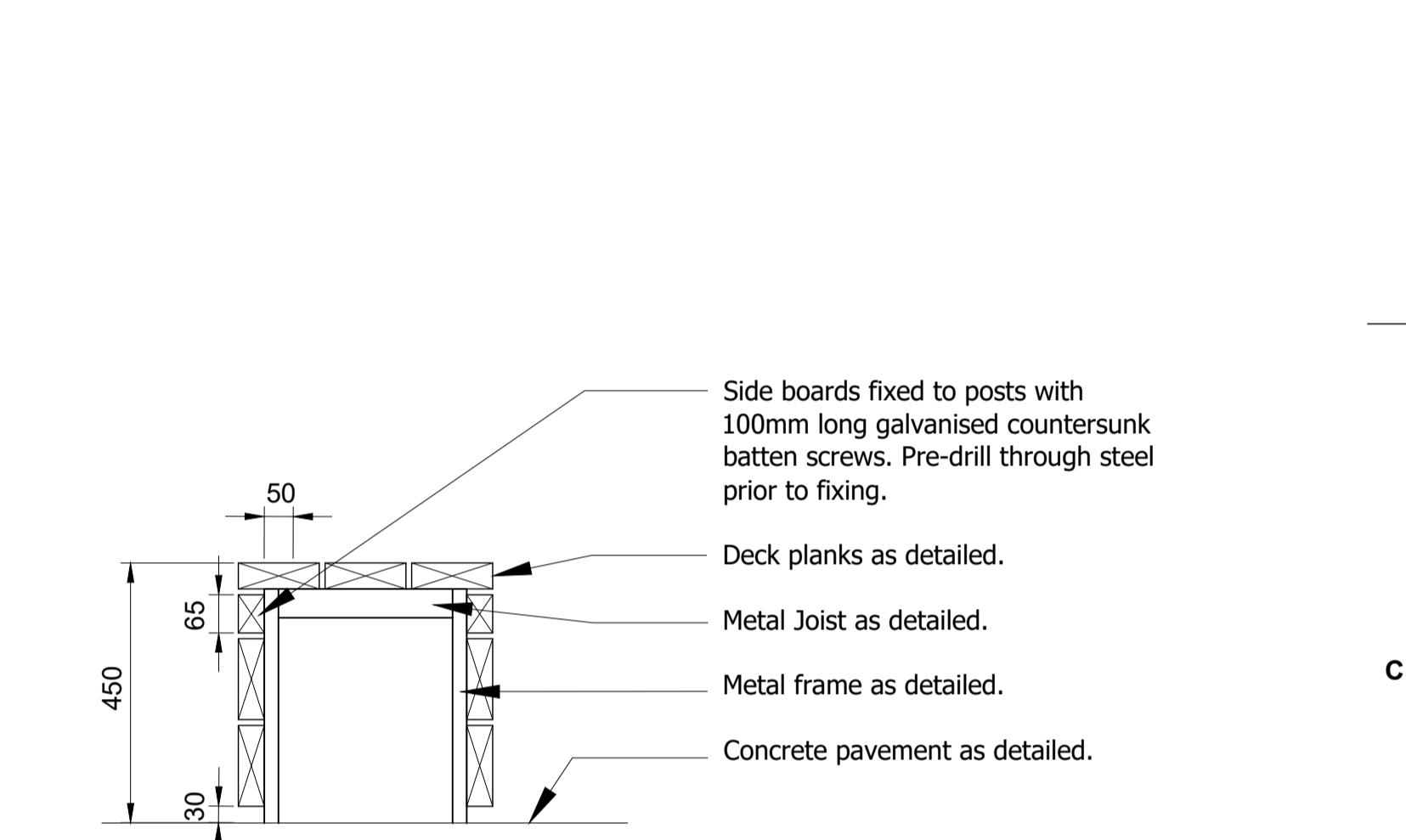
Three 25 x 50 x 3mm Joists.

25 x 50 x 3mm Support post.

25 x 50 x 3mm Bottom rail.

Concrete pavement as detailed.

Three M16 x 100mm stainless steel RAMSET SpaTec safety anchor.



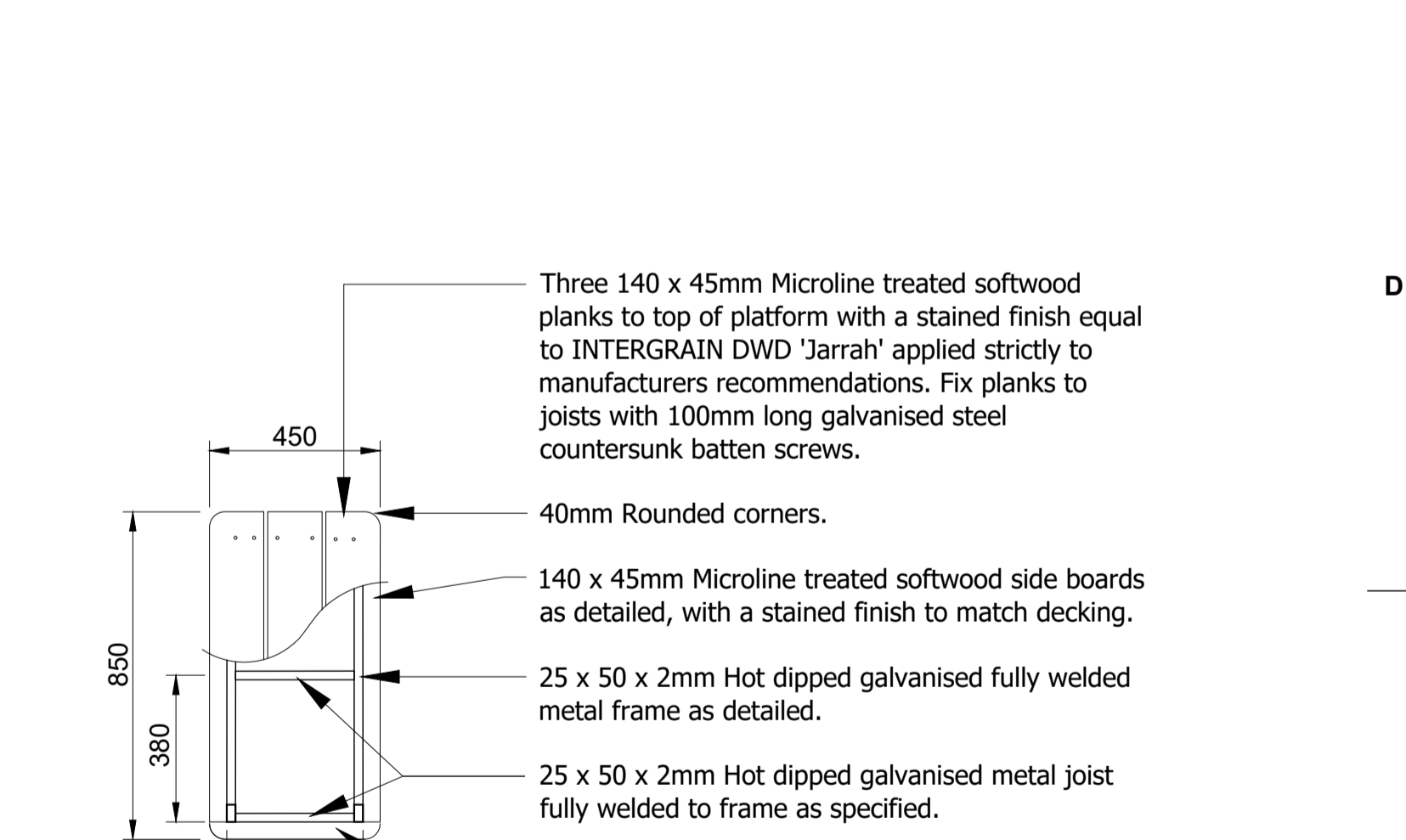
Side boards fixed to posts with 100mm long galvanised countersunk batten screws. Pre-drill through steel prior to fixing.

Deck planks as detailed.

Metal Joist as detailed.

Metal frame as detailed.

Concrete pavement as detailed.



Three 140 x 45mm Microline treated softwood planks to top of platform with a stained finish equal to INTERGRAIN DWD 'Jarrah' applied strictly to manufacturers recommendations. Fix planks to joists with 100mm long galvanised steel countersunk batten screws.

40mm Rounded corners.

140 x 45mm Microline treated softwood side boards as detailed, with a stained finish to match decking.

25 x 50 x 2mm Hot dipped galvanised fully welded metal frame as detailed.

25 x 50 x 2mm Hot dipped galvanised metal joist fully welded to frame as specified.

No side boards to ends.

PLAN

SEAT

LANGE
design
landscape architecture

M : 0412 336 381
ABN: 97 468 721 622
PO Box 5017
Launceston TAS 5017
www.langedesign.com.au
leon@langedesign.com.au

CLIENT

NORTHERN MIDLANDS COUNCIL

ISSUE SCHEDULE		
Issue	Description	Date
A	Preliminary Issue	15/11/16
B	Approval Issue	23/11/16

NOTES

Landscape works drawings, associated specifications and details shall be read in conjunction with all other project consultants approved drawings including: architectural, engineering, hydraulic, and electrical services.

DIAL BEFORE YOU DIG. Check all underground services prior to commencement of any works.

Ensure all dimensions are checked on site prior to commencement of landscape works. All dimensions shown on drawings and details are in millimetres unless noted otherwise.

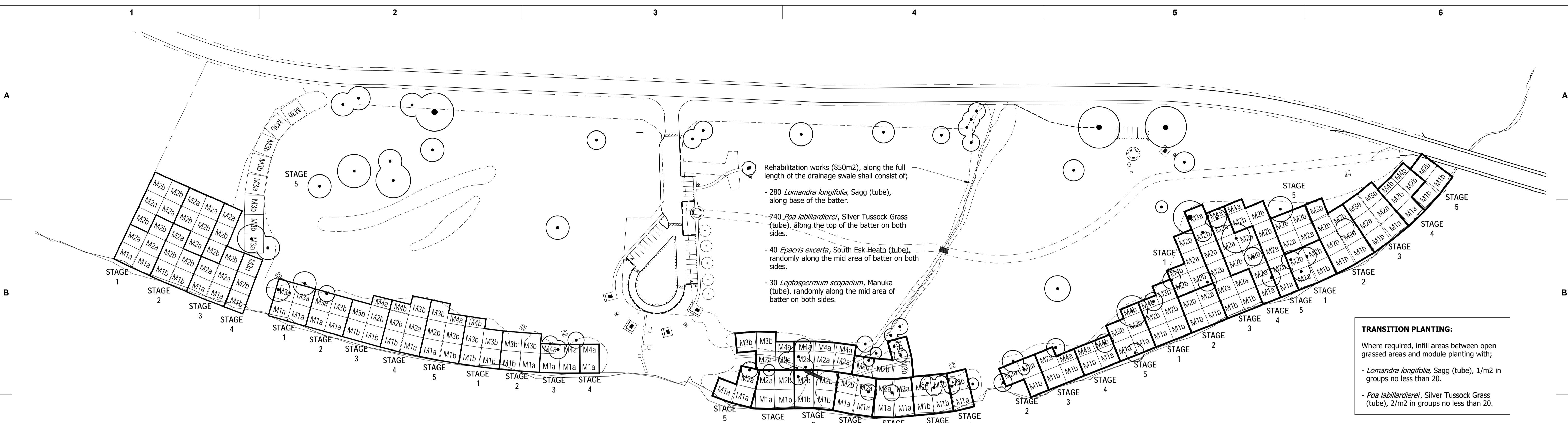
PROJECT

HONEYSUCKLE BANKS PARKLAND
Leighlands Road, Evandale, Tasmania

DRAWING TITLE

LANDSCAPE DETAILS

DRAWING INFORMATION		
Scale Bar	North	
Date 23/11/16	Project Stage APPROVAL	Sheet 7/8
DRAWING No. NMCHB1016 - LP07	Issue B	



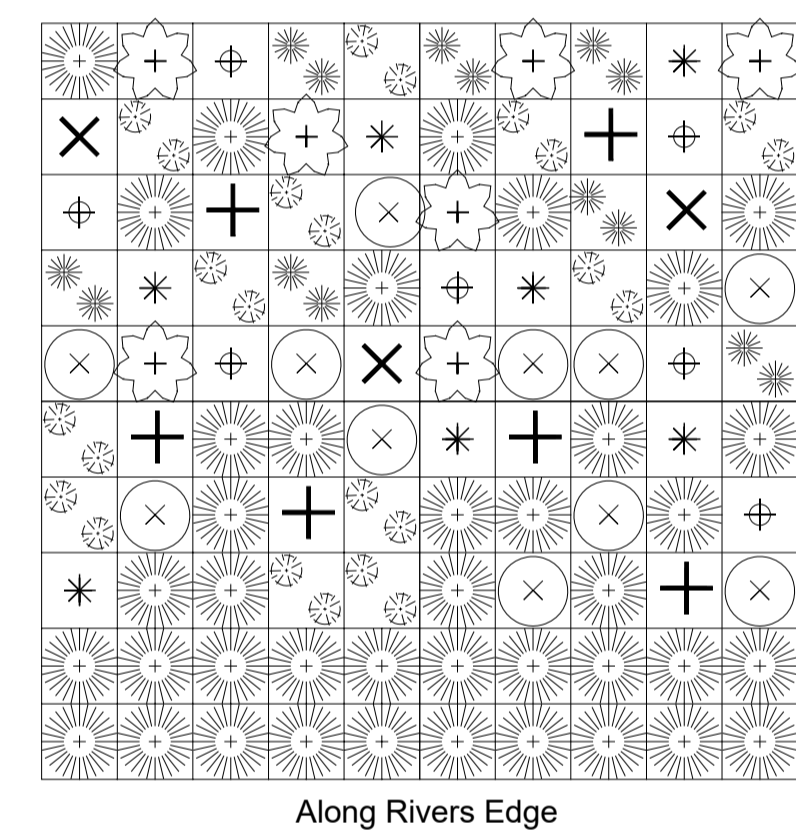
TRANSITION PLANTING:
Where required, infill areas between open grassed areas and module planting with;

- *Lomandra longifolia*, Sagg (tube), 1/m² in groups no less than 20.
- *Poa labillardierei*, Silver Tussock Grass (tube), 2/m² in groups no less than 20.

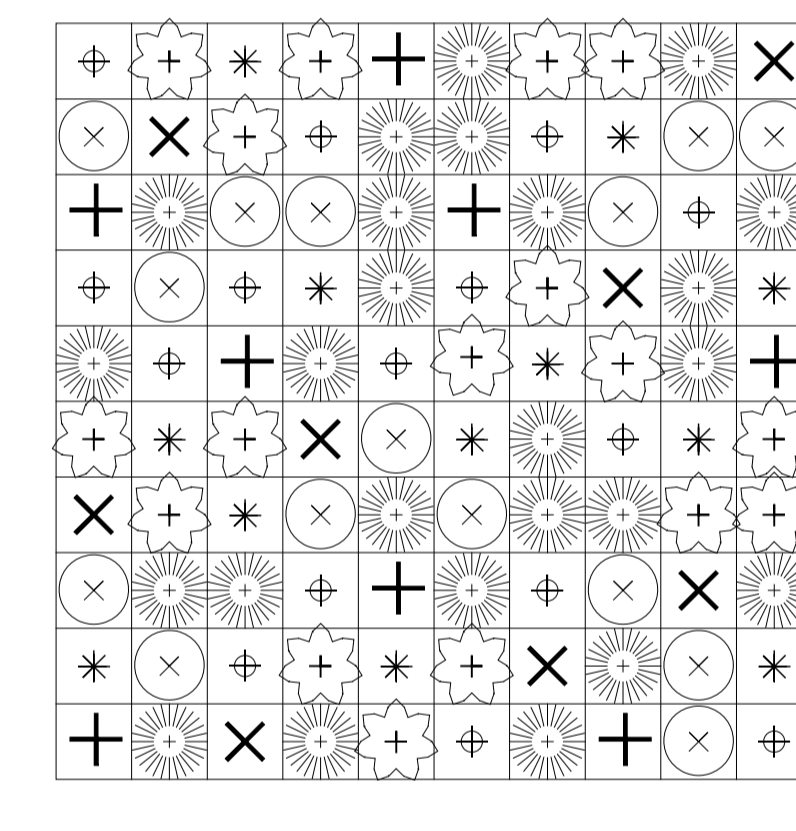
PLANT SCHEDULE (Per Module)

SYM	BOTANICAL NAME	COMMON NAME	POT	Module								Stage				
				M1a	M1b	M2a	M2b	M3a	M3b	M4a	M4b	Stage 1	Stage 2	Stage 3	Stage 4	Stage 5
Grasses																
☉	<i>Lomandra longifolia</i>	Sagg	Tube	40	38	25	25	11	25	10	16	1062	1025	1243	1179	1071
☉	<i>Poa labillardierei</i>	Silver Tussock Grass	Tube	24	28	-	-	26	42	14	22	680	714	640	492	772
☉	<i>Themeda triandra</i>	Kangaroo Grass	Tube	14	16	-	-	54	30	18	16	620	496	528	402	592
Shrubs																
⊕	<i>Epacris excerta</i>	South Esk Heath	Tube	7	8	17	17	9	10	6	3	418	411	550	565	440
⊕	<i>Leptospermum scoparium</i>	Manuka	Tube	11	16	15	15	11	12	3	5	482	495	589	408	499
Trees																
✱	<i>Acacia axillaris</i>	Midlands Wattle	Tube	7	-	12	12	8	-	1	-	240	200	322	363	227
⊕	<i>Banksia marginata</i>	Silver Banksia	Tube	7	4	15	15	7	4	5	2	328	279	522	485	331
+	<i>Eucalyptus amygdalina</i>	Black Peppermint	Tube	6	7	8	8	8	7	2	3	259	224	313	302	270
×	<i>Eucalyptus ovata</i>	Swamp Gum	Tube	3	5	8	8	4	6	2	2	209	215	266	266	223

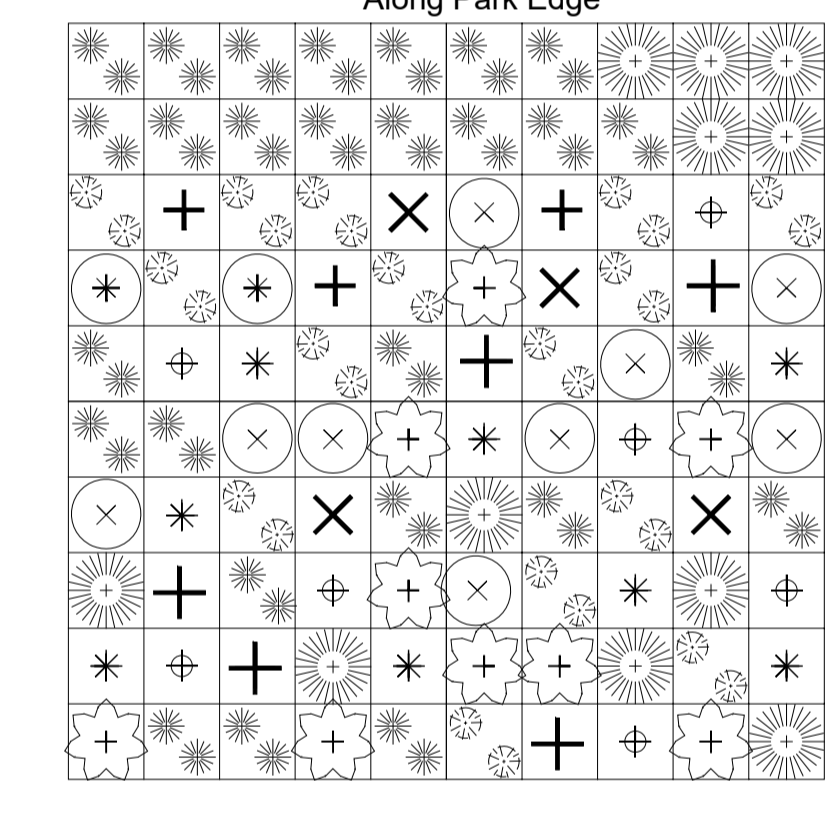
MODULE 1a (M1a)



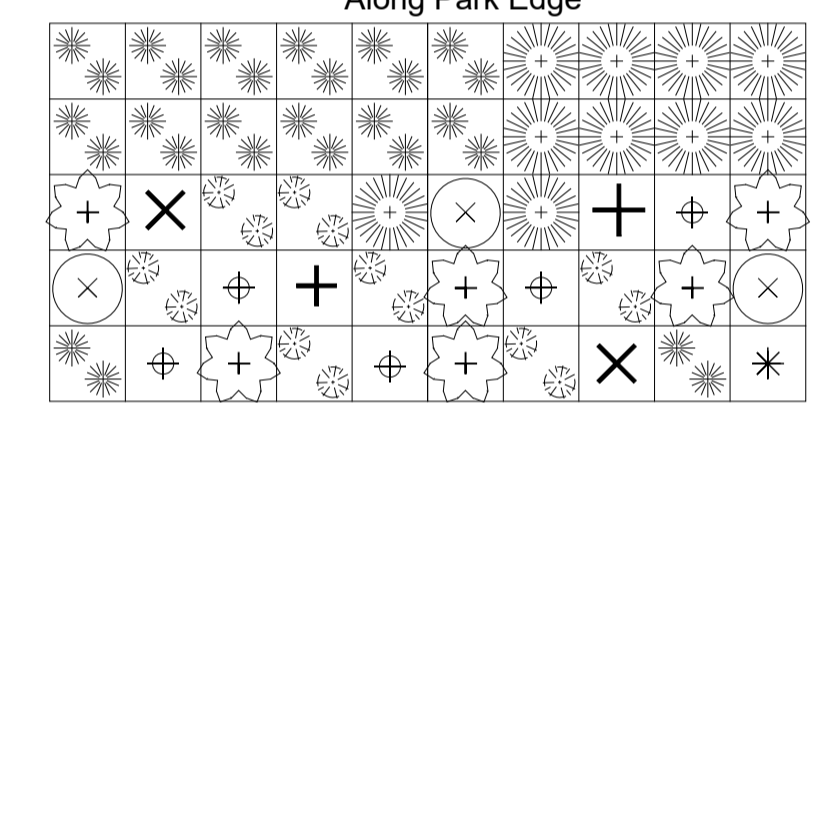
MODULE 2a (M2a)



MODULE 3a (M3a)



MODULE 4a (M4a)



SPECIFICATION NOTES

GENERALLY
This drawing shall be printed out at A1 size and preferably laminated for site works.

The spatial arrangement of this plan is based upon aerial photography and not a detailed site survey. Discrepancies of distances and actual positions of landscape features may differ from that on the ground, and it is recommended to either report these to Council's representative or make adjustments on-site as they are encountered.

STAGING OF WORKS
The layout and arrangement of the rehabilitation planting modules are designed to be staging over a five year period, unless planned otherwise.

The staging of the modules reduces the need for broad clearing along the river bank and ensures existing stabilised areas assist in protecting new rehabilitated areas during flooding periods. It is therefore of high importance that the on-going maintenance of new rehabilitated areas is performed to eliminate weed species from re-establishing.

NRM NORTH
18 months prior to commencing any on ground rehabilitation works of the areas depicted on the drawings, NRM North must be contacted and made aware of the proposed project.

EXISTING TREES
All native vegetation shall be retained and protected from works. Cutting or removal of limbs where required shall be confirmed with Council's representative prior to any works.

WEED REMOVAL
All environmental weeds shall be removed from site in accordance with local and state legislation and recommendations, including pulling, cutting, spraying, removing and disposal.

Willow species shall be poisoned in accordance with local and state legislation, and cut down and debris fully removed from site, with roots and trunks retained to stabilised river bank.

Habitat Elements: Where possible, logs (from native trees), boulders and other natural structures shall be arranged throughout the rehabilitation area to provide habitat for local fauna and as a form of flood protection for newly planted areas.

PLANTING WORKS
Where possible, plants for this project shall be sourced from site harvested seed and/or cuttings to ensure the sustainability and enhancement of the local ecosystem is achieved.

For trees and shrubs, 'long-stem' stock is preferred over standard tube stock.

It is recommended that all plants are grown at various nurseries to avoid complications with growing conditions and availability.

TREE GUARDS
Where possible utilise stable tree guards around shrubs and trees, jute mulch mats around plants, with mulch dispersed between plantings to suppress weeds as specified.

MULCHING
All revegetation areas shall include a layer of TREEMAX 'Sure Jute Thick' or similar. Jute mat shall be secured in place with 450mm long metal staples as per manufacturers recommendations. Matting shall be installed to ensure flood waters do not underpin the matting and wash the matting away.

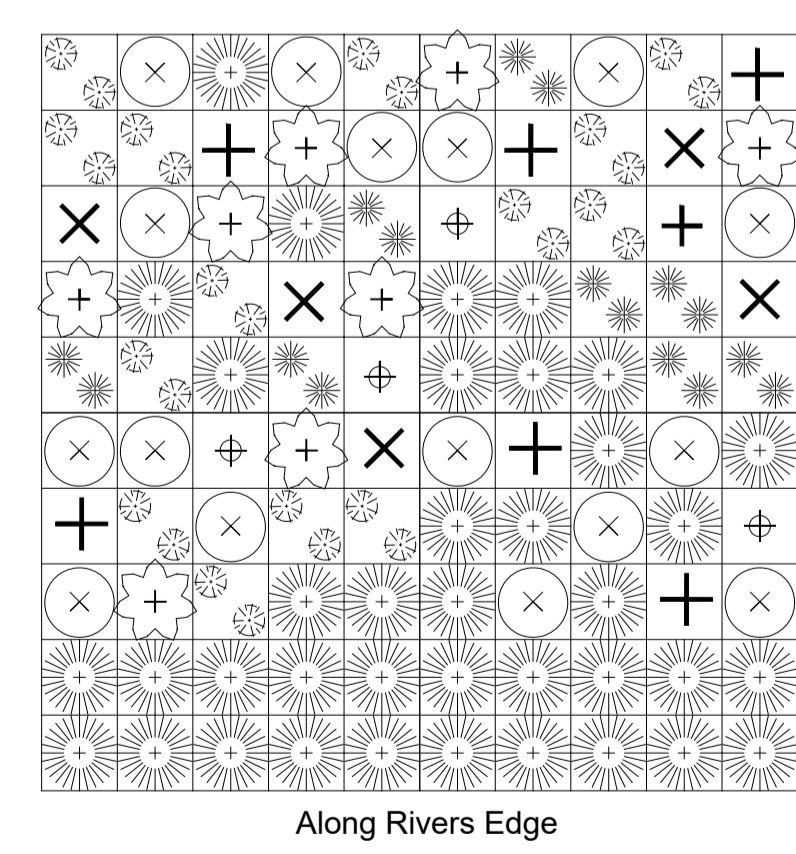
WATERING
All plants shall be watered for the first two weeks of planting.

Preferably, plants shall be performed during the wetter periods of the year. Outside these periods, either a temporary irrigation systems or sprinklers set up using water from a watering truck shall be used.

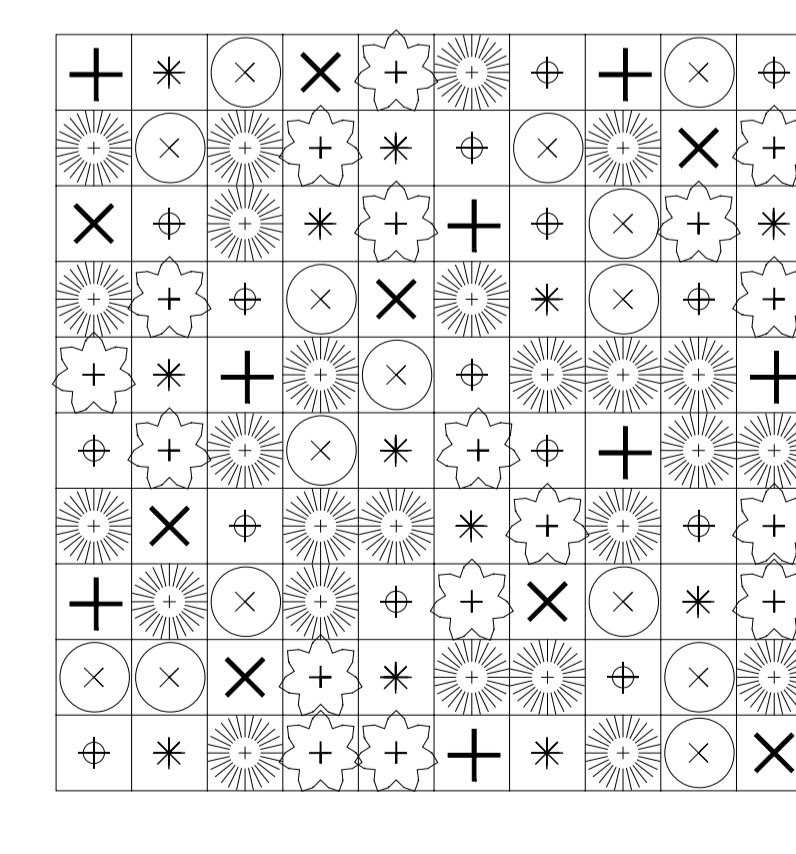
MAINTENANCE:
Continual maintenance of newly rehabilitated areas is of significant importance in establishing a successful project. The continual monitoring of plant health ensures strong growth and quick establishment of the rehabilitated river bank.

Weeds: All weeds must be eliminated as soon as possible and mulch depths maintained.

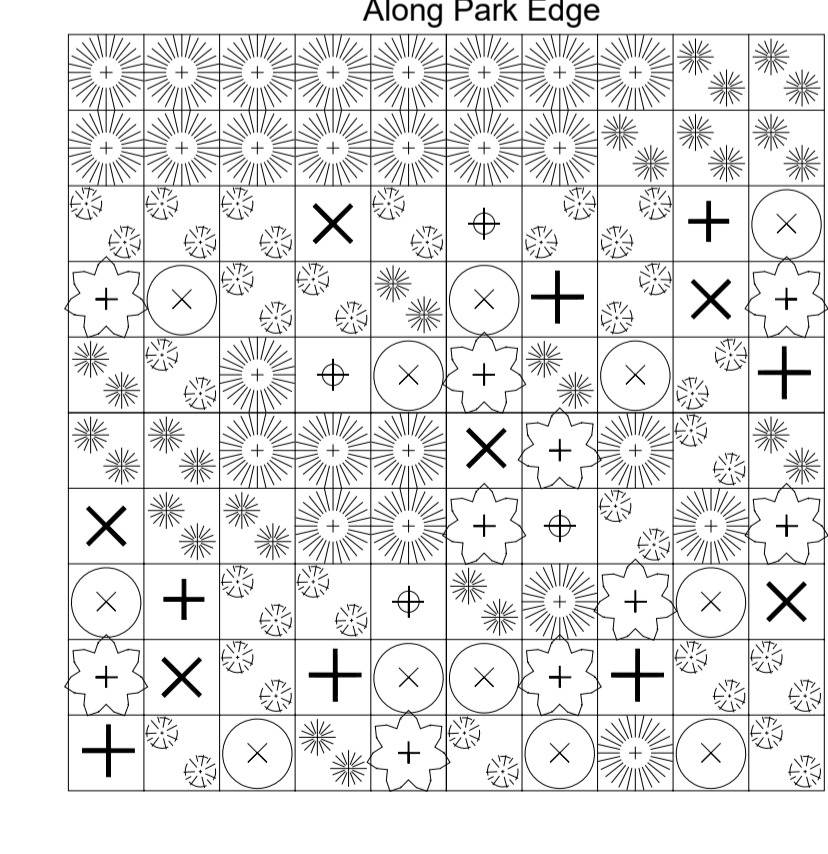
MODULE 1b (M1b)



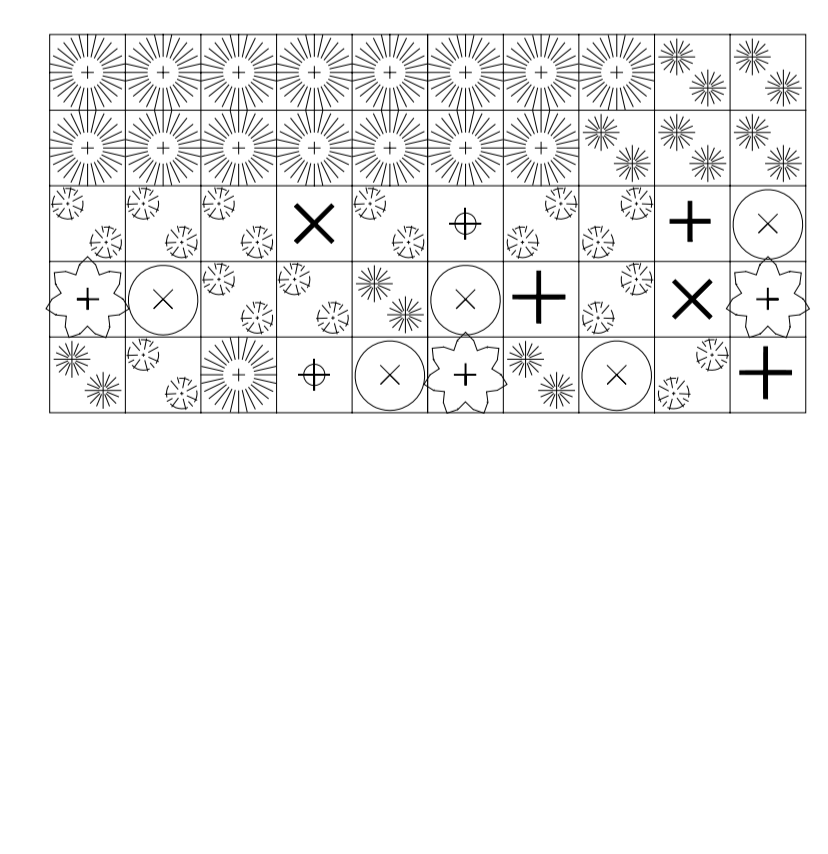
MODULE 2b (M2b)



MODULE 3b (M3b)



MODULE 4b (M4b)



LANGE
design
landscape architecture

M : 0412 336 381
ABN: 97 468 721 622
PO Box 5017
Launceston TAS 5017
www.langedesign.com.au
leon@langedesign.com.au

<p>CLIENT</p> <p>NORTHERN MIDLANDS COUNCIL</p>	<p>ISSUE SCHEDULE</p> <table border="1"> <thead> <tr> <th>Issue</th> <th>Description</th> <th>Date</th> </tr> </thead> <tbody> <tr> <td>A</td> <td>Preliminary Issue</td> <td>15/11/16</td> </tr> <tr> <td>B</td> <td>Approval Issue</td> <td>23/11/16</td> </tr> <tr> <td>C</td> <td>Mulch Type Amended</td> <td>28/02/17</td> </tr> </tbody> </table>	Issue	Description	Date	A	Preliminary Issue	15/11/16	B	Approval Issue	23/11/16	C	Mulch Type Amended	28/02/17	<p>NOTES</p> <p>Landscape works drawings, associated specifications and details shall be read in conjunction with all other project consultants approved drawings including: architectural, engineering, hydraulic, and electrical services.</p> <p>DIAL BEFORE YOU DIG. Check all underground services prior to commencement of any works.</p> <p>Ensure all dimensions are checked on site prior to commencement of landscape works. All dimensions shown on drawings and details are in millimetres unless noted otherwise.</p>	<p>PROJECT</p> <p>HONEYSUCKLE BANKS PARKLAND Leighlands Road, Evandale, Tasmania</p> <p>DRAWING TITLE</p> <p>REHABILITATION PLAN</p>	<p>DRAWING INFORMATION</p> <p>Scale Bar North</p>
		Issue	Description	Date												
A	Preliminary Issue	15/11/16														
B	Approval Issue	23/11/16														
C	Mulch Type Amended	28/02/17														
<p>Date</p> <p>28/02/17</p>	<p>Project Stage</p> <p>APPROVAL</p>	<p>Sheet</p> <p>8/8</p>														
			<p>DRAWING No.</p> <p>NMCHB1016 - LP08</p>	<p>Issue</p> <p>C</p>												